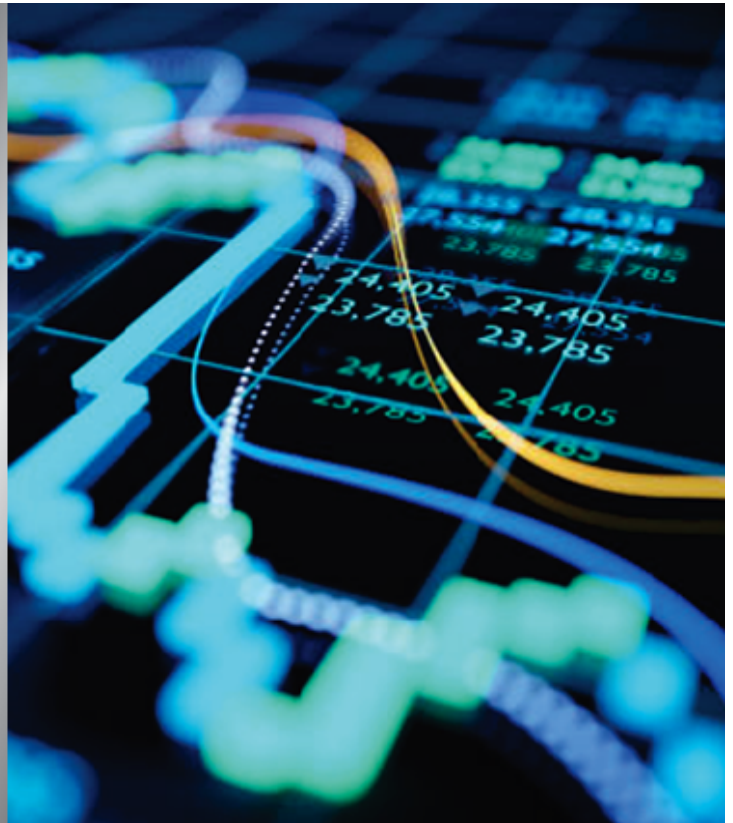


Fed Projections Are Useless - RIA

By Lance Roberts | September 23, 2023





Inside This Week's Bull Bear Report

- *Fed Projections Are Useless*
- *How We Are Trading It*
- *Research Report ? That 70s Show*
- *Youtube ? Before The Bell*
- *Market Statistics*
- *Stock Screens*
- *Portfolio Trades This Week*

Market Update & Review

The market took a hit this week as the Fed projections of *'higher for longer'* killed the *'rate cut hopes.'* However, while there was much handwringing and teeth-gnashing over the decline, it was normal within any given year. [As we noted in June:](#)

'Notably, in any given year, bullish or bearish, a 5-10% correction is entirely normal and healthy. Such corrective actions are opportunities to increase portfolio equity risk.'

It took a bit longer than expected for the correction to begin, but in late July, the market peaked and has continued to correct through September. With the market still in a broader uptrend, the bullish backdrop remains, but there is a risk of a decline to 4200. However, the market is oversold on many levels, so a reflexive rally next week to the 50-DMA would be unsurprising.



TradingView



Not only is the current correction normal, but it is also well aligned with the seasonal tendencies of market returns, as we noted on Tuesday in [?October Weakness.?](#)

?While September has been a bit sloppy so far, will further weakness in October weigh on investor sentiment before the seasonally strong period begins? The S&P 500 index seasonality chart below shows weakness in the last two weeks of September and the first two weeks of October is common.?



Nonetheless, the weakness following the FOMC this weakness certainly raises concerns. However, a history review suggests that while the Fed is currently *?talking a tough game,* reality tends to be very different. The reason is that the Fed projections are useless because they are always late and wrong. There is no reason to suspect this time will be different.

Need Help With Your Investing Strategy?

Are you looking for complete financial, insurance, and estate planning? Need a risk-managed portfolio management strategy to grow and protect your savings? Whatever your needs are, we are here to help.

	Need a plan to protect your hard earned savings from the next bear market?	> Schedule your consultation today
	Need a plan to protect your hard earned savings from the next bear market?	> Schedule your consultation today

World's Worst Economic Forecasters

As noted, Wednesday's Federal Reserve rate decision was not a surprise. The overall language of their statement barely changed, and the expectation of *?higher for longer?* remained. The potential of an additional rate hike later this year spooked the markets on Thursday.

However, keeping the possibility of an additional rate hike on the table was prudent as the markets would have perceived any other statement as *?dovish?* and that the Fed was done hiking rates. As Justin Lahart wrote for the WSJ:

*?The Fed projecting one last rate increase is also a way of preventing investors from immediately turning to the next question: 'When will the Fed cut?'; The risk is that as soon as investors start doing that, rate expectations will come down sharply, and with them, long-term interest rates, **providing the economy with a boost the Fed doesn't want it to receive just yet.***

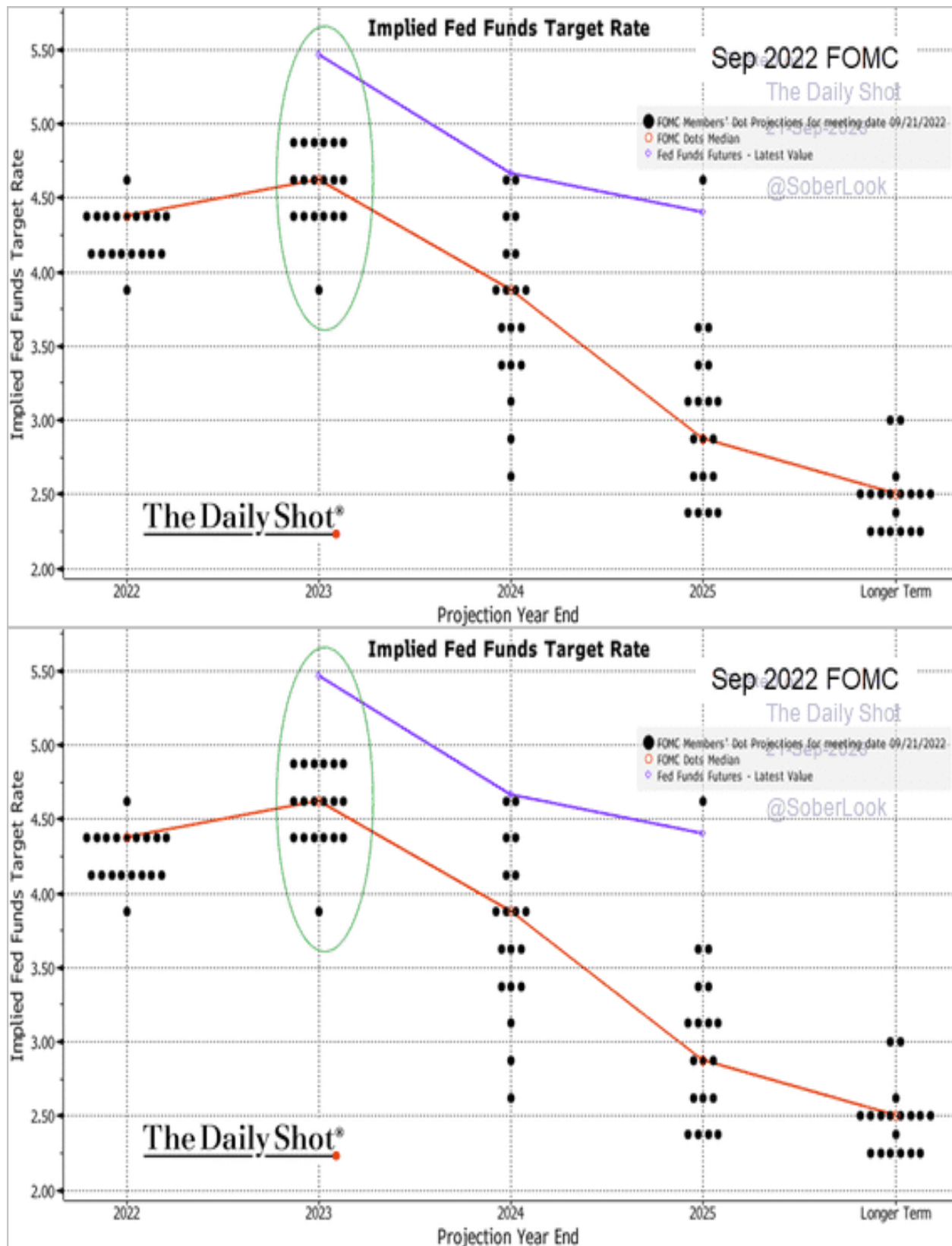
That is right. Since October last year, the market has been hoping for rate cuts and running up asset prices in advance. Of course, higher asset prices boost consumer confidence, potentially keeping inflationary pressures elevated. Keeping a rate hike on the table keeps the options for the Federal Reserve open.

As the WSJ noted:

?Fed Chair Jerome Powell said that officials didn't need to decide yet whether to lift rates again after a historically rapid series of increases over the past 18 months and as they await evidence that a recent inflation slowdown can be

sustained. As Jerome Powell stated, 'Let's see how the data comes in. They want to be convinced. They want to be careful not to jump to a conclusion.'?

However, what seemed to spook the bond and stock markets was that Fed officials indicated they expect to keep rates higher for longer through 2024 than they anticipated earlier this year. Such quelled hopes of a return to monetary accommodations anytime soon and shifted the expectations for cuts forward.

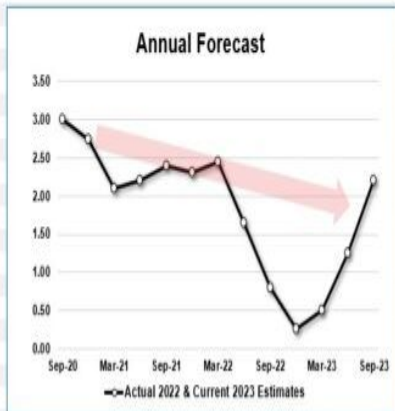


This push forward of rates is based on the idea that the economy remains strong, creating a resurgence of inflation later this year.

However, there is a problem with the Fed projections. **They are historically the worst economic forecasters ever.** We have tracked the median point of the Fed projections since 2011, and they have yet to be accurate. The table and chart show that Fed projections are always inherently overly optimistic.

FOMC Economic Projections (Avg. Of Range)

Meeting Date	2011	2012	2013	2014	2015	2016	2017	2018	2019	2020	2021	2022	2023	2024	2025	2026	Long Run	Actual GDP
Jan-11	3.7	3.95	4														2.7	1.54
Apr-11	3.3	3.65	4														2.7	1.54
Jun-11	2.75	3.1	3.75														2.7	1.54
Nov-11	1.7	2.9	3.35	3.6													2.6	1.54
Jan-12		2.55	3.1	3.55													2.6	2.26
Apr-12		2.55	3.1	3.6													2.6	2.26
Jun-12		2.05	2.85	3.4													2.6	2.26
Sep-12		1.8	2.9	3.4	3.35												2.6	2.26
Dec-12		1.8	2.6	3.4	3.35												2.6	2.26
Mar-13			2.5	3.2	3.15												2.5	1.83
Jun-13			2.3	2.9	3.05												2.5	1.83
Sep-13			2.1	2.75	2.95	2.85											2.3	1.83
Dec-13			2.3	2.75	2.9	2.8											2.15	1.83
Mar-14				2.55	2.85	2.8											2.1	2.26
Jun-14				2.3	2.9	2.8											2.15	2.26
Sep-14				2.05	2.65	2.55	2.3										2.2	2.26
Dec-14				2.4	2.65	2.55	2.35										2.25	2.26
Mar-15					2.6	2.55	2.15										2.15	2.67
Jun-15					2.0	2.65	2.25										2.15	2.67
Sep-15					2.2	2.45	2.25	2									2.25	2.67
Dec-15					2.1	2.35	2.15	2.05									2.05	2.67
Mar-16						2.20	2.00	2.05									2.10	1.65
Jun-16						2.00	2.00	1.85									2.00	1.65
Sep-16							1.85	2.05	1.90	1.90							1.90	1.65
Dec-16							1.90	2.05	2.00	1.85							1.90	1.65
Mar-17							1.59	2.00	2.05	1.85							1.90	2.22
Jun-17								2.25	2.00	1.85							1.85	2.22
Sep-17								2.45	2.15	1.85	1.70						1.85	2.22
Dec-17								2.50	2.50	2.05	1.65						1.95	2.22
Mar-18									2.75	2.40	1.90						1.95	2.90
Jun-18									2.75	2.40	1.85						1.90	2.90
Sep-18									3.15	2.45	2.05	1.80					1.90	2.90
Dec-18									3.05	2.35	1.85	1.75					1.95	2.90
Mar-19										2.00	1.95	1.85					1.95	2.27
Jun-19										2.20	1.90	1.80					1.90	2.27
Sep-19										2.25	2.00	1.90	1.85				1.90	2.27
Dec-19										2.20	2.05	1.95	1.85				1.95	2.27
Mar-20																	1.90	-2.81
Jun-20																	1.90	-2.81
Sep-20										-7.10	-4.00	4.00					1.90	-2.81
Dec-20										-4.00	2.75	3.25	3.00				1.90	-2.81
Mar-21											3.00	3.25	2.75				1.90	-2.81
Jun-21											6.15	3.45	2.10				1.90	-2.81
Sep-21											7.05	3.40	2.20				1.90	5.78
Dec-21											5.90	4.00	2.40				1.90	5.78
Mar-22											5.55	3.90	2.30	2.00			1.90	5.78
Jun-22												2.70	2.45	2.00			1.90	5.78
Sep-22												1.70	1.65	1.75			1.90	2.04
Dec-22												0.35	0.80	1.80	1.90		1.90	2.04
Mar-23												0.35	0.25	1.45	1.85		2.05	5.78
Jun-23													0.50	1.15	1.85		2.05	2.04
Sep-23													1.25	1.35	1.85		2.05	2.04
													2.20	1.45	1.95	2.05	2.05	2.04



(No Release Due To Pandemic)

GDP
Projections
Continue To
Slump

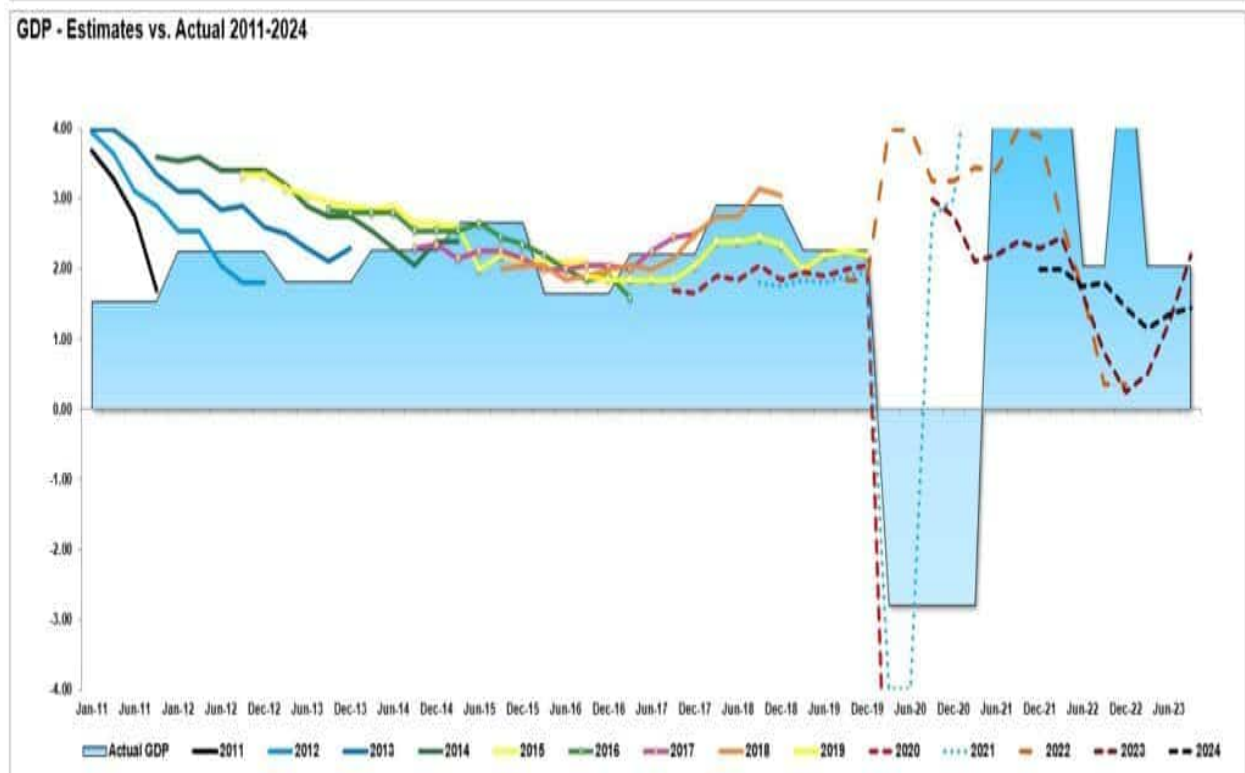
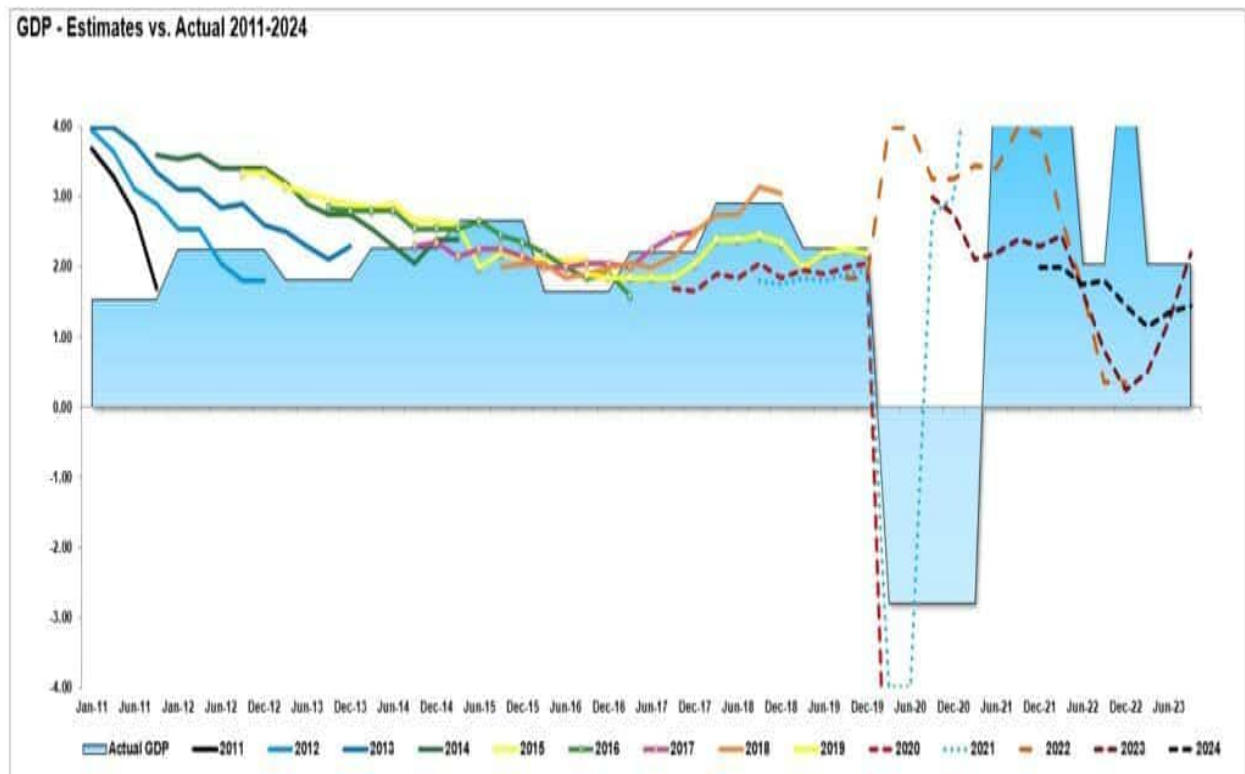
FOMC Economic Projections (Avg. Of Range)

Meeting Date	2011	2012	2013	2014	2015	2016	2017	2018	2019	2020	2021	2022	2023	2024	2025	2026	Long Run	Actual GDP
Jan-11	3.7	3.95	4														2.7	1.54
Apr-11	3.3	3.65	4														2.7	1.54
Jun-11	2.75	3.1	3.75														2.7	1.54
Nov-11	1.7	2.9	3.35	3.6													2.6	1.54
Jan-12		2.55	3.1	3.55													2.6	2.26
Apr-12		2.55	3.1	3.6													2.6	2.26
Jun-12		2.05	2.85	3.4													2.6	2.26
Sep-12		1.8	2.9	3.4	3.35												2.6	2.26
Dec-12		1.8	2.6	3.4	3.35												2.6	2.26
Mar-13			2.5	3.2	3.15												2.5	1.83
Jun-13			2.3	2.9	3.05												2.5	1.83
Sep-13			2.1	2.75	2.95	2.85											2.3	1.83
Dec-13			2.3	2.75	2.9	2.8											2.15	1.83
Mar-14				2.55	2.85	2.8											2.1	2.26
Jun-14				2.3	2.9	2.8											2.15	2.26
Sep-14				2.05	2.65	2.55	2.3										2.2	2.26
Dec-14				2.4	2.65	2.55	2.35										2.25	2.26
Mar-15					2.6	2.55	2.15										2.15	2.67
Jun-15					2.0	2.65	2.25										2.15	2.67
Sep-15					2.2	2.45	2.25	2									2.25	2.67
Dec-15					2.1	2.35	2.15	2.05									2.05	2.67
Mar-16						2.20	2.00	2.05									2.10	1.65
Jun-16						2.00	2.00	1.85									2.00	1.65
Sep-16							1.85	2.05	1.90	1.90							1.90	1.65
Dec-16							1.90	2.05	2.00	1.85							1.90	1.65
Mar-17							1.59	2.00	2.05	1.85							1.90	2.22
Jun-17								2.25	2.00	1.85							1.85	2.22
Sep-17								2.45	2.15	1.85	1.70						1.85	2.22
Dec-17								2.50	2.50	2.05	1.65						1.95	2.22
Mar-18									2.75	2.40	1.90						1.95	2.90
Jun-18									2.75	2.40	1.85						1.90	2.90
Sep-18									3.15	2.45	2.05	1.80					1.90	2.90
Dec-18									3.05	2.35	1.85	1.75					1.95	2.90

Real
Investment
Advice

As shown, in 2022, the Fed thought 2022 growth would be near 3%. That has been revised down to just 2.2% currently and will likely be lower by year-end, as we will explain momentarily.

Here is the graphical version of the Fed projections. Like Wall Street analysts with earnings estimates, the Fed's projections are always initially overly optimistic and guided lower to reality.

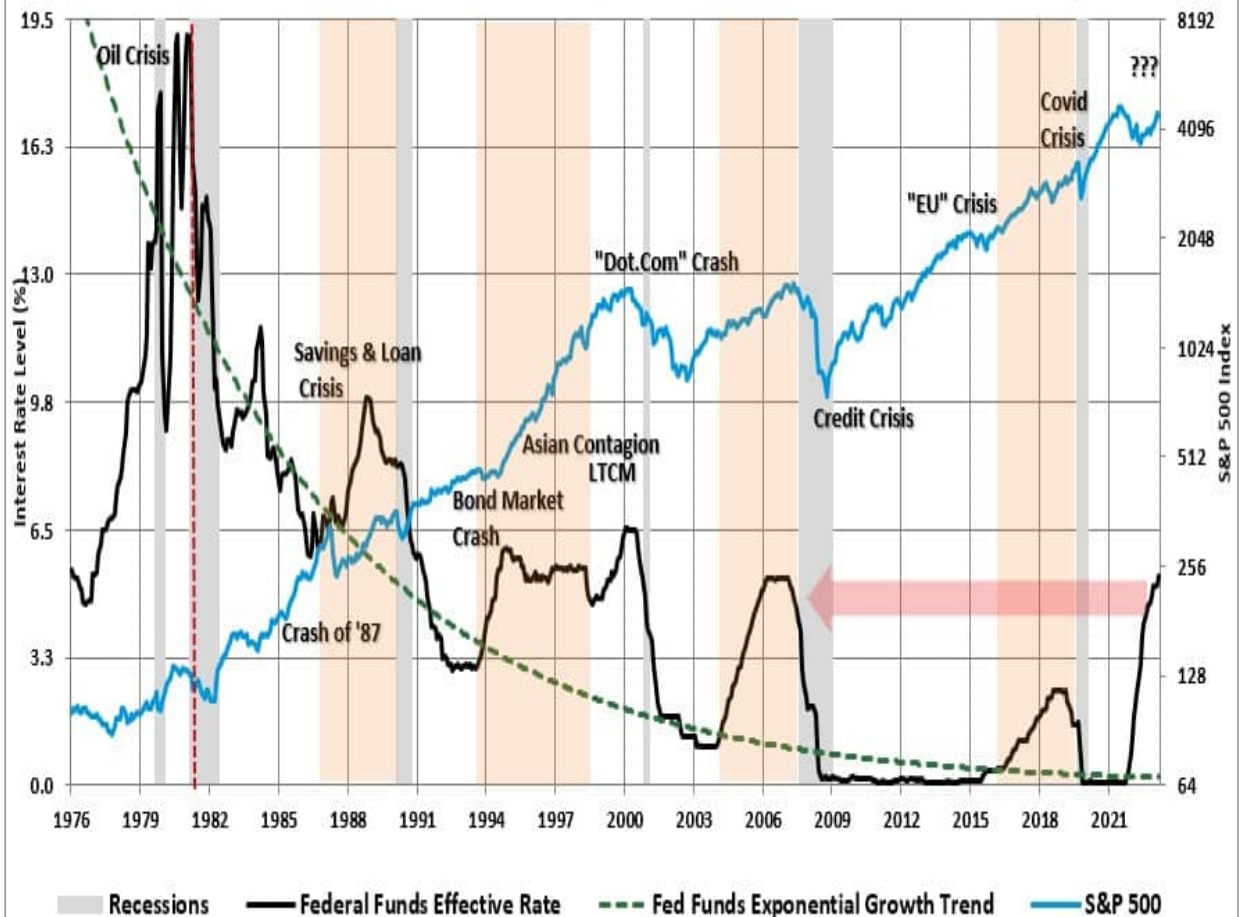


While the Fed is pushing a *no pivot* stance, there is good reason to expect a pivot in 2024.

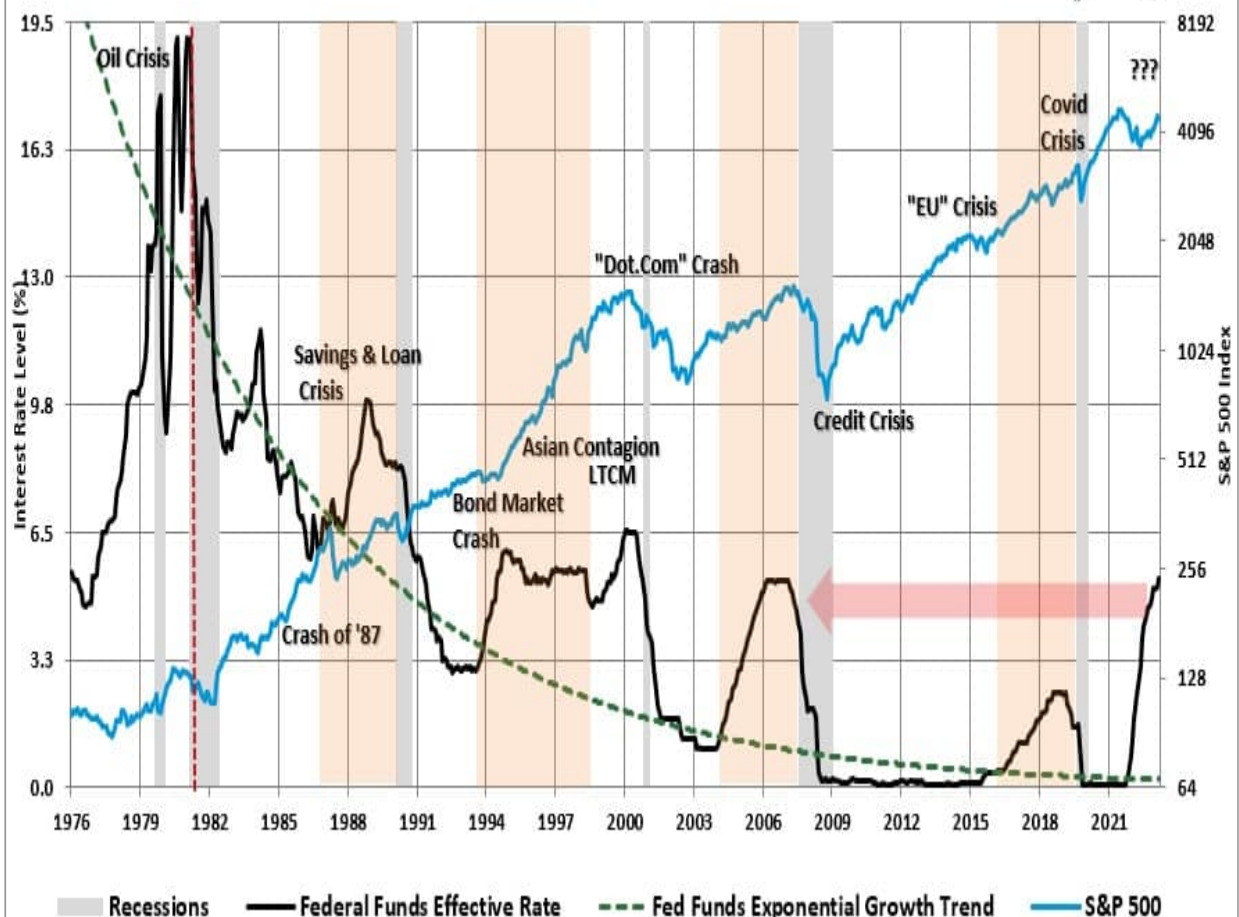
A 2008 Redux?

The Federal Reserve's current policy rate is the highest since 2008. If you don't remember what happened, then let me remind you.

The Federal Reserve & Soft Landing Scenarios



The Federal Reserve & Soft Landing Scenarios



In January 2008, the Fed was aggressively hiking interest rates amid a massive real estate bubble under the Chairmanship of Ben Bernanke. At that time, there was *no recession* in sight, *subprime mortgages were contained*, and it was a *Goldilocks economy*.

Eight months later, the market fell sharply, banks were on the brink of bankruptcy, and the economy was entrenched in a massive recession as Lehman Brothers filed for bankruptcy.

The Fed projections NEVER include the risk of a recession, and today, like then, it believed it could navigate a soft landing in the economy. They were wrong on multiple counts. As we showed previously, there are ZERO times in history when the Fed was hiking rates that outcomes were not bad to awful. After rates peaked and yield curves UN-inverted, recessions, bear markets, and crisis events occurred.

The Fed will likely be surprised again in the next few months as the lagging economic data they focus on gets revised sharply lower. One of the main reasons is a subject we covered in detail in [*Economic Data Diverges*](#). To wit:

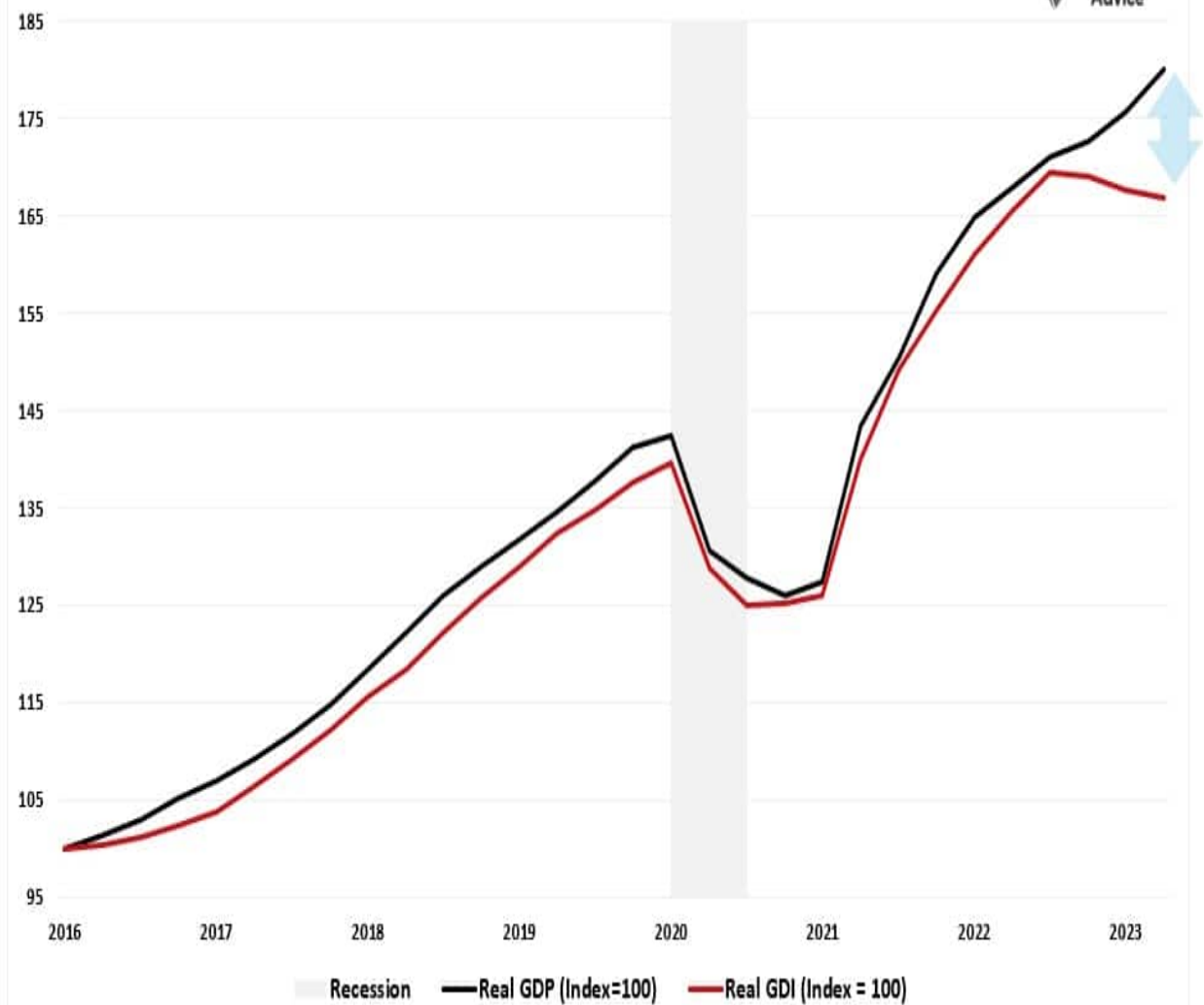
Therefore, given that GDI measures the income side of the equation (derived from production), it is logical that GDI should track pretty closely to GDP over time.

Furthermore, it should be logical that deviations between production and consumption should indicate a shift in the economic underpinnings.

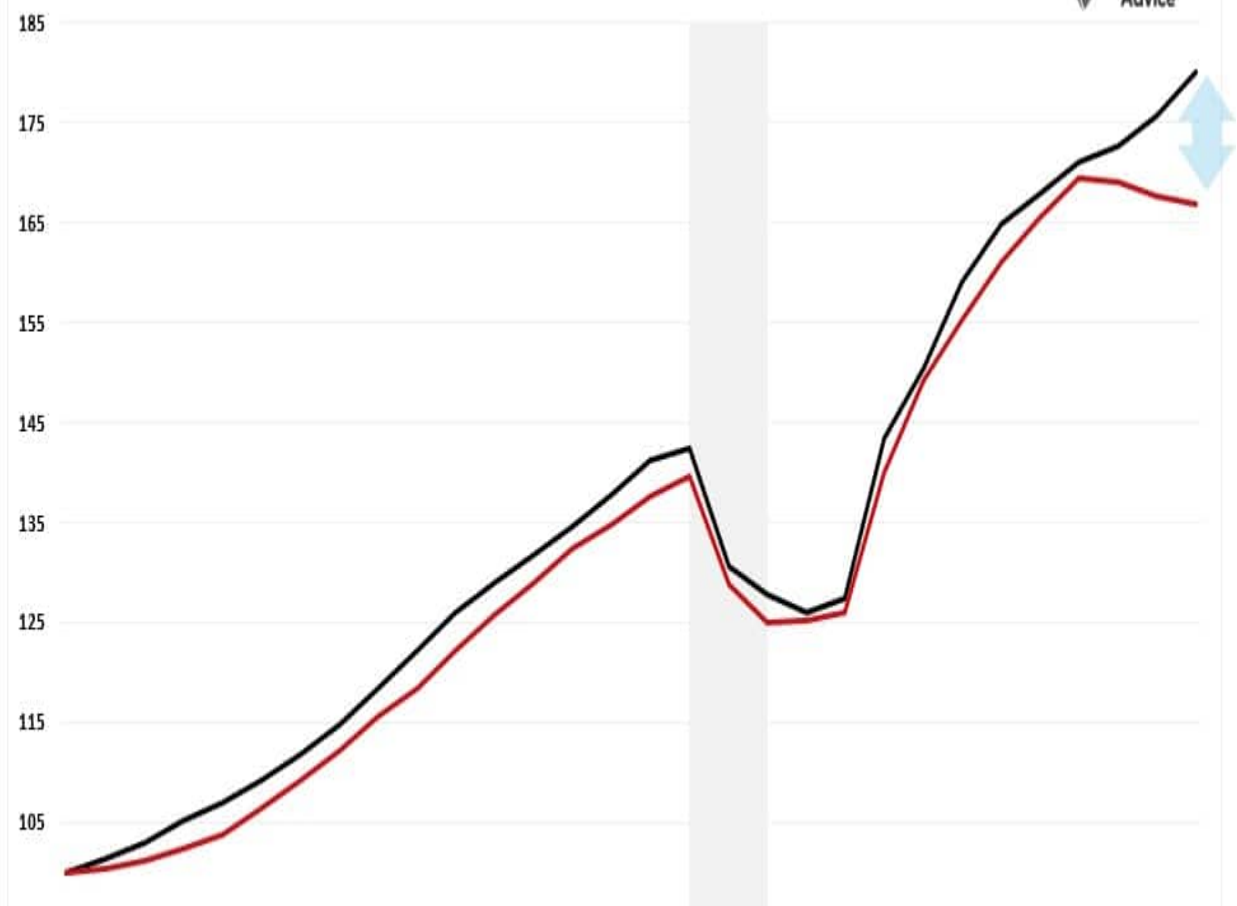
A Catch Down Is Coming

However, the deviation starting last year between those two measures is quite apparent and begs the question of **whether this is an anomaly or not**.

Two Measures Of Real Economic Activity, Two Different Messages

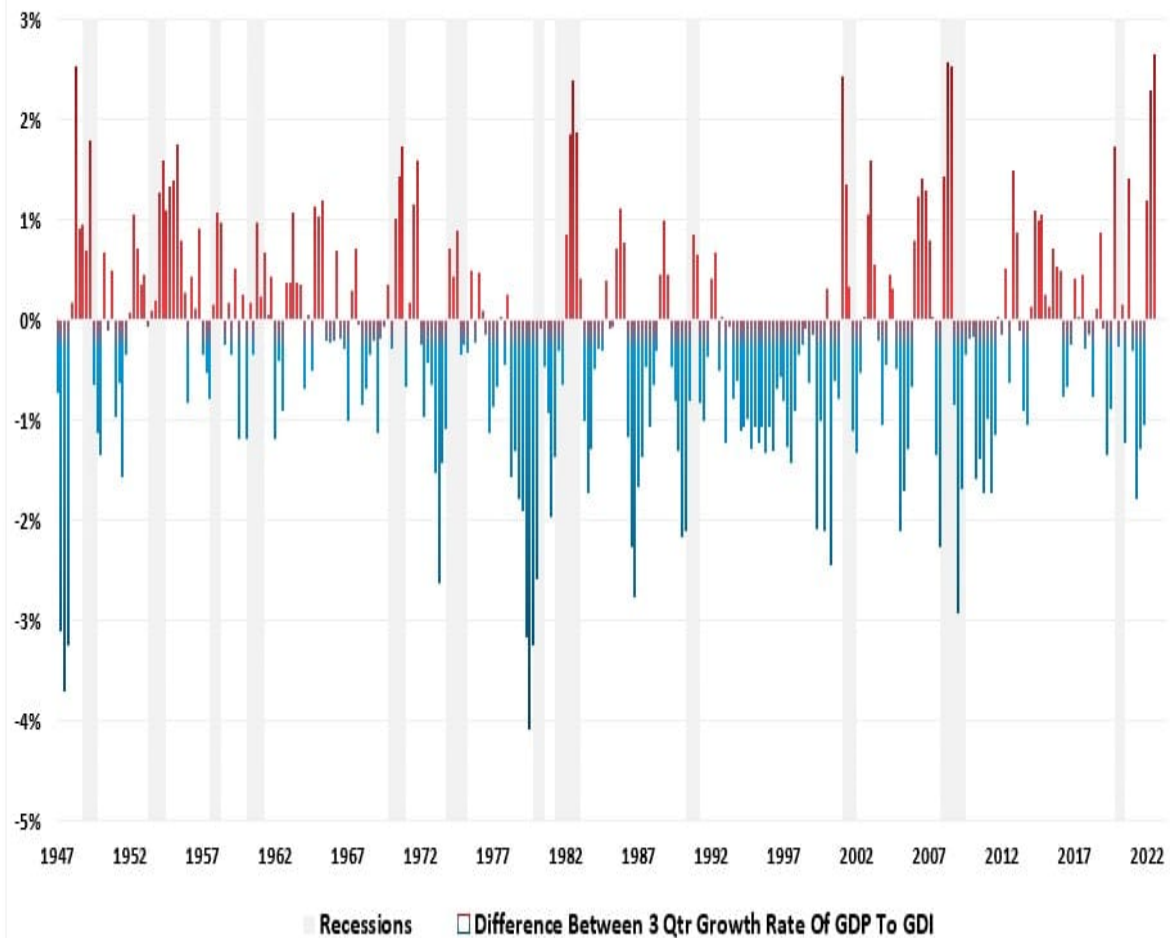


Two Measures Of Real Economic Activity, Two Different Messages

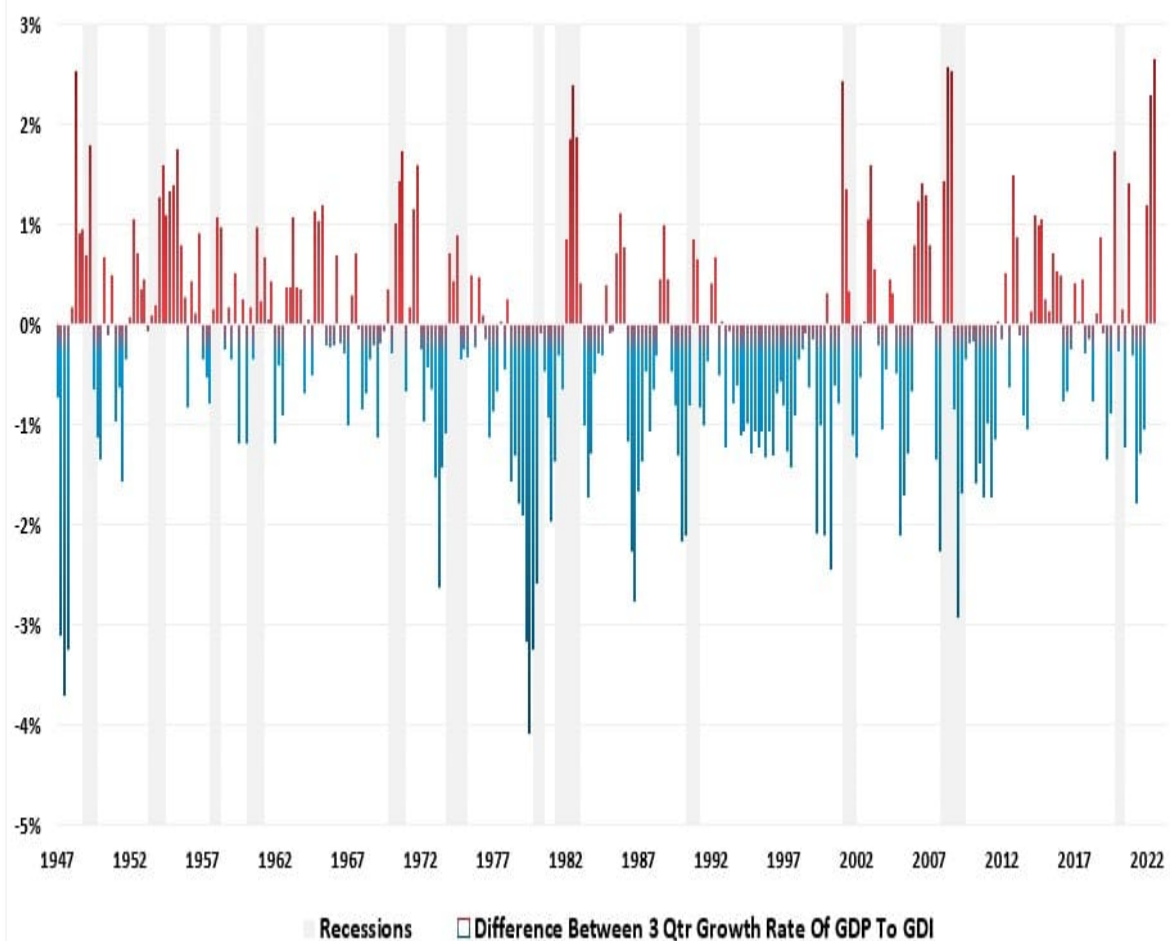


The chart below looks at real GDP and GDI back to 1947 and measures the deviation between the 3-quarter growth rates of each. With only the expectation being in the late 70's, a recession followed each time GDP deviated from GDI. In other words, the economic activity eventually catches down to the primary driver of consumption: production. Currently, the deviation of GDP from GDI is the largest on record.

The Gap Between The 3-Qtr Growth Rate Of GDP & GDI

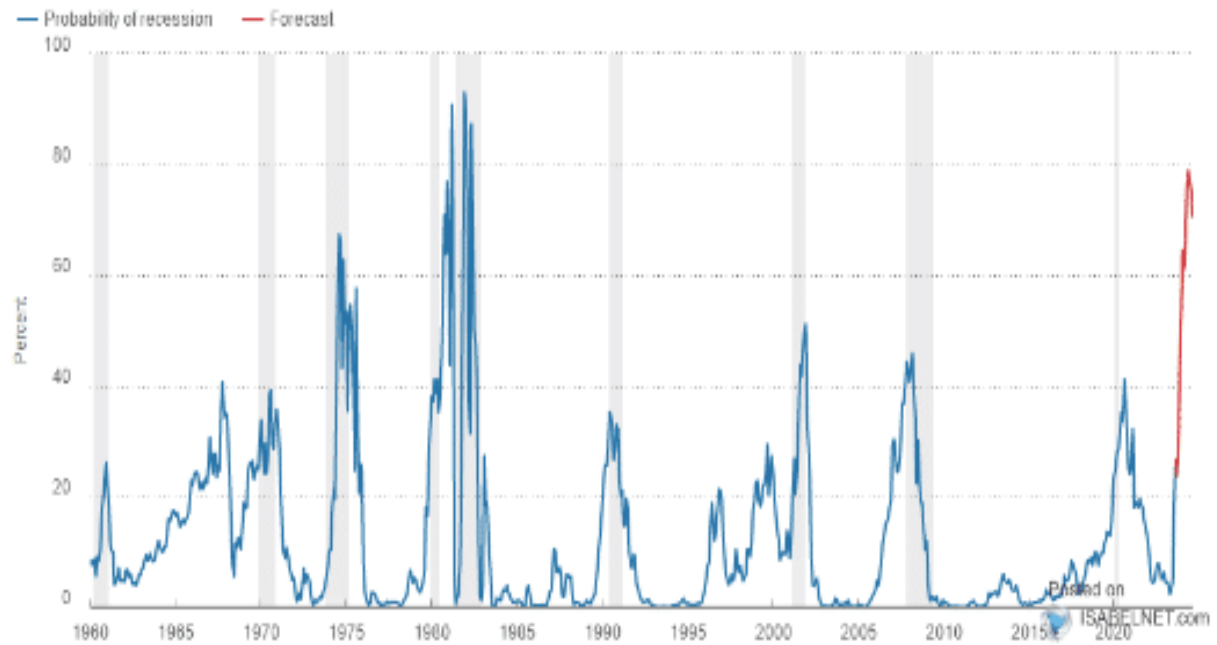


The Gap Between The 3-Qtr Growth Rate Of GDP & GDI



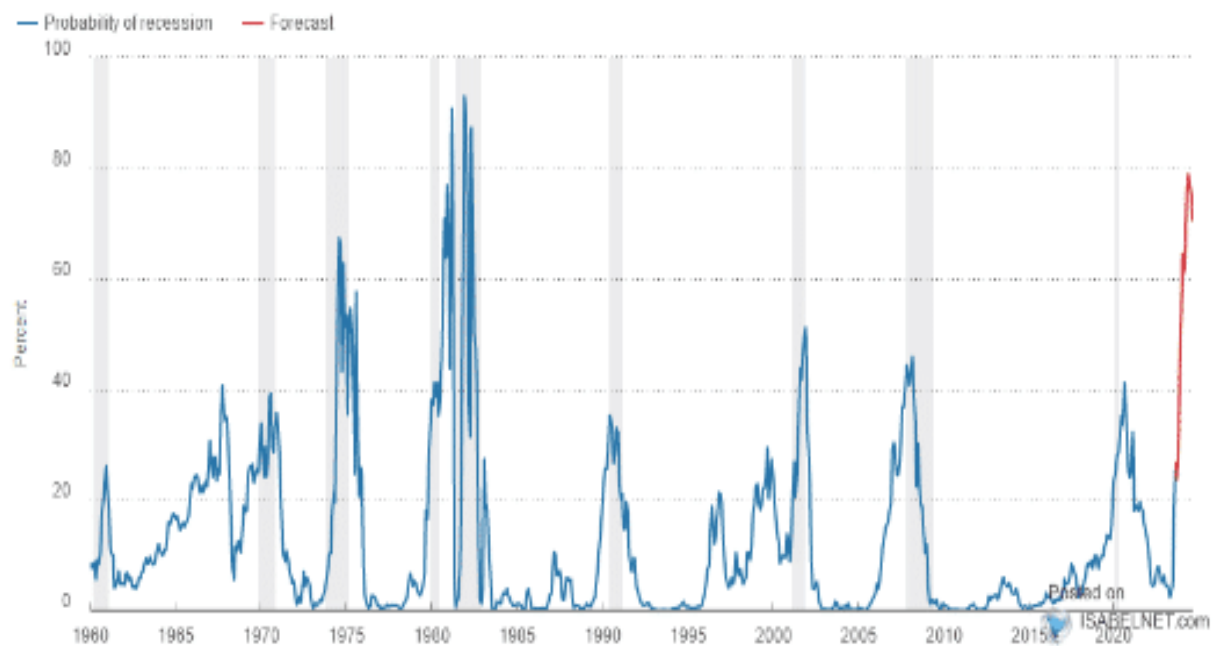
In past articles, we reviewed many indicators that typically preceded recessionary onsets. ***Falling tax receipts,*** ***inverted yield curves***, ***student loan payments,*** ***leading economic indicators, and*** ***even our*** economic composite confirm that recessionary risks remain elevated. As shown, based solely on the inverted yield curve alone, the probability of a recession is at one of the highest levels since the 1980s.

Probability of Recession Calculated from the Yield Curve



Source: Federal Reserve Board, Federal Reserve Bank of Cleveland, Haver Analytics. Note: Shaded bars indicate recessions.

Probability of Recession Calculated from the Yield Curve



Source: Federal Reserve Board, Federal Reserve Bank of Cleveland, Haver Analytics. Note: Shaded bars indicate recessions.

Given the wide range of other confirming indicators previously discussed, there is a high probability that the Fed will cut rates in 2024 as GDP is revised to what GDI tells us about the economy.

Soft Landings Are Extremely Elusive

While the current economic data suggests that the economy is doing fine, such is always the case just before the realization it's not. So far, the markets have continued to place 'hope' on the extremely elusive 'soft landing' scenario. However, there are many risks to that view, as noted. As the WSJ said:

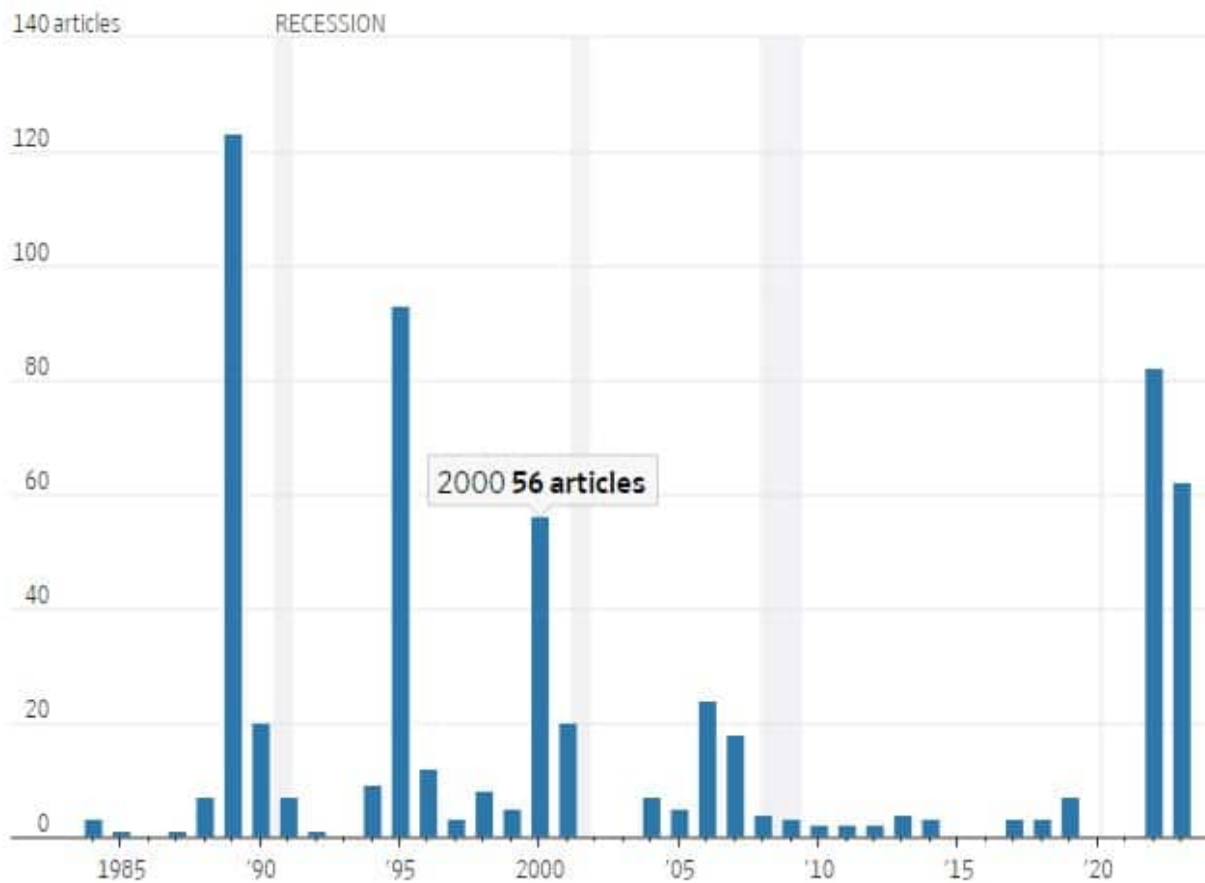
*'Similarly, this summer's combination of easing inflation and a cooling labor market has fueled optimism among economists and Federal Reserve officials that this elusive goal might be in reach. **But soft landings are rare for a reason: They are tricky to pull off.***

The reason is that many factors have yet to reveal themselves. Such as:

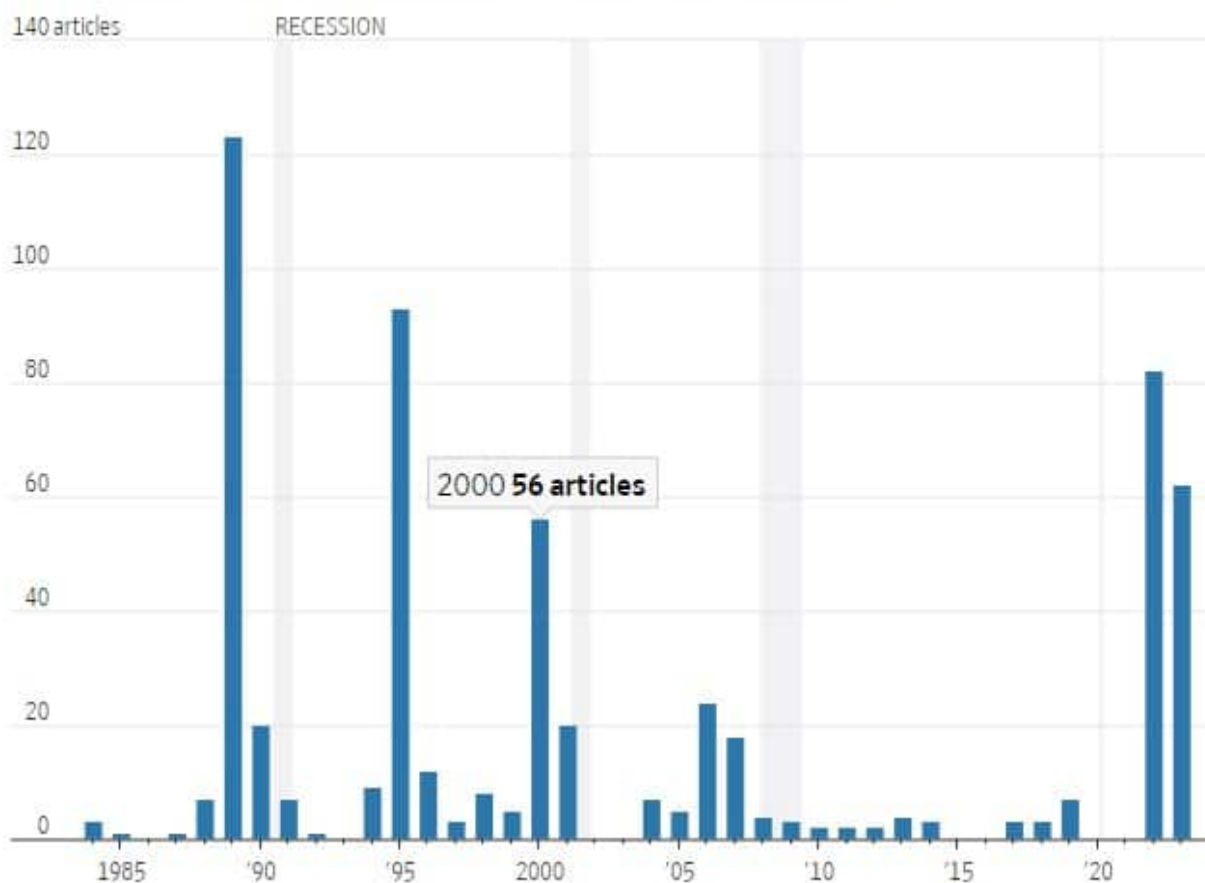
1. *The Fed's aggressive rate hiking campaign has a 'lag effect' that will impact the economy in 2024.*
2. *The restart of the student loan payments will extract spending from the economy.*
3. *A potential Government shutdown could clip growth heading into the end of the year.*
4. *The autoworkers strike could have an impact on growth.*
5. *Higher interest rates weigh on consumption, which is nearly 70% of the economic equation.*

Furthermore, from a purely contrarian point of view, the experts no longer consider a 'recession' a risk.

Number of Wall Street Journal articles that reference a 'soft landing'



Number of Wall Street Journal articles that reference a 'soft landing'



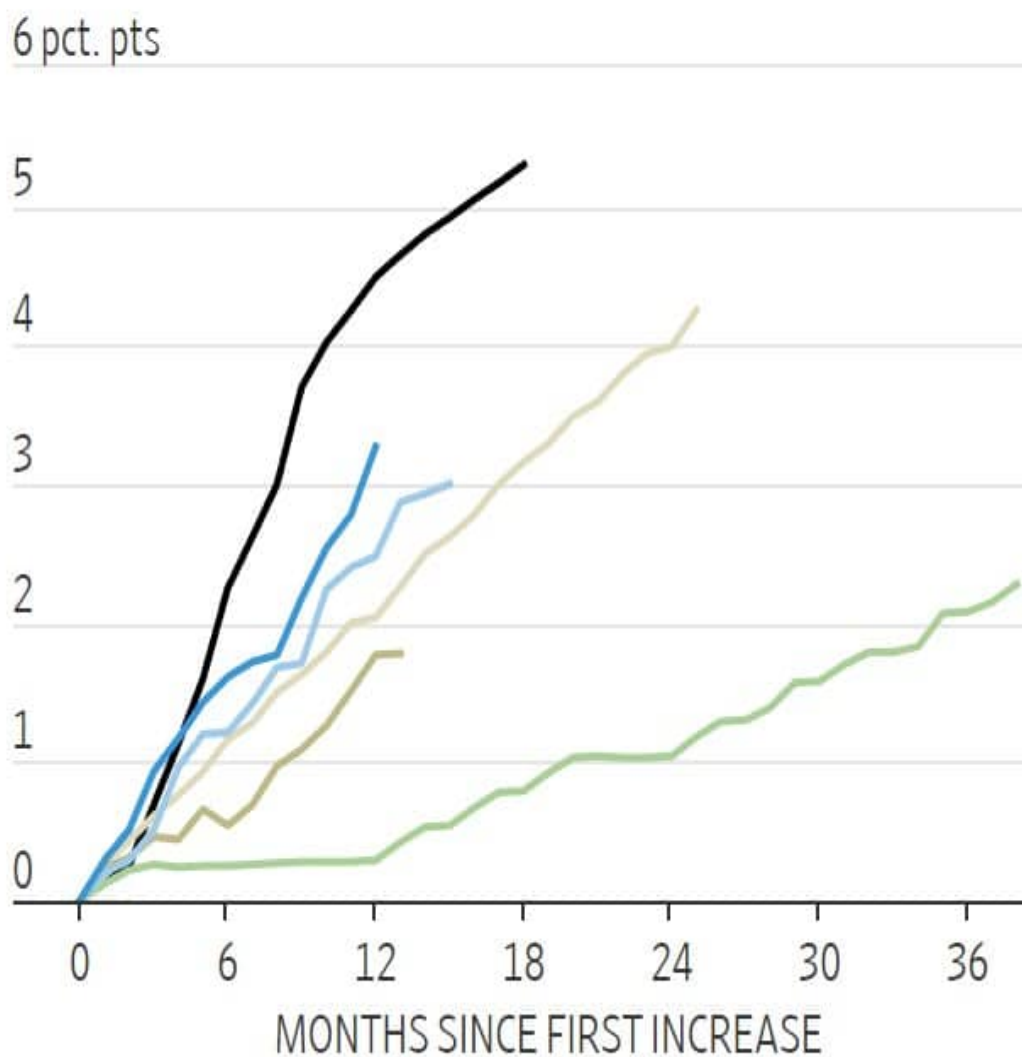
As we [quoted previously in 2022](#), when *everyone* was expecting a recession:

When all experts agree, something else tends to happen. ? ? Bob Farrell.

Historically, the Fed has always gone too far when hiking rates. Take a look at the chart below.

Cumulative change in federal-funds rate since start of initial rate increase

■ 1988 ■ 1994 ■ 1999 ■ 2004
■ 2015 ■ 2022



Source: Federal Reserve

Cumulative change in federal-funds rate since start of initial rate increase

■ 1988 ■ 1994 ■ 1999 ■ 2004
■ 2015 ■ 2022

6 pct. pts

What this chart doesn't tell you is the following:

- 1988 ? Led to a recession in 1991
- 1994 ? Led to a crash in the bond market.
- 1999 ? Preceded the Dot.com crash and recession
- 2004 ? Led to the Financial Crisis
- 2015 ? Preceded the EuroZone crisis and the Fed's Taper Tantrum
- 2022 ? Recession in 2024?

Sure, this time could be different. The problem is that, historically, such has not been the case. While we must weigh the possibility that the Fed is correct in its more optimistic predictions, the probabilities still lie with its previous track record and the indicators.

How We Are Trading It

The Fed's no pivot policy stance drives the markets short-term. Investors remain at the mercy of volatile markets with little direction on where capital can find safety. Gold has not hedged inflation. Bonds have not hedged risk, and equities remain under continuous pressure.

The setup remains more bearish than bullish, so we continue to monitor and adjust our positioning. As noted, there is a developing opportunity to own long-dated Treasury bonds, but you must give that thesis time to play out into 2024. However, as Greg Feirman recently penned:

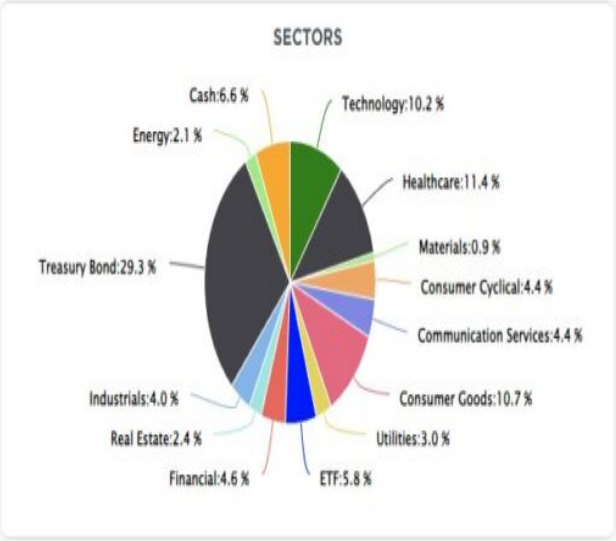
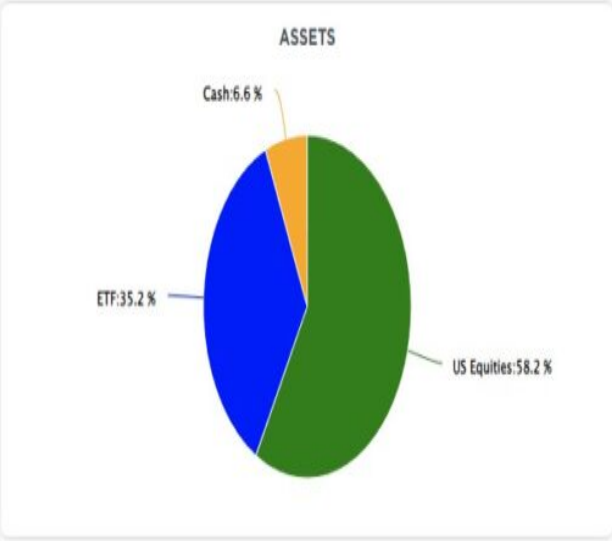
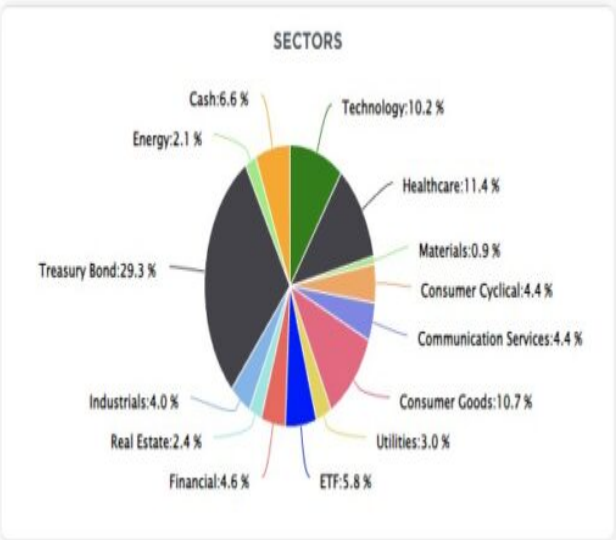
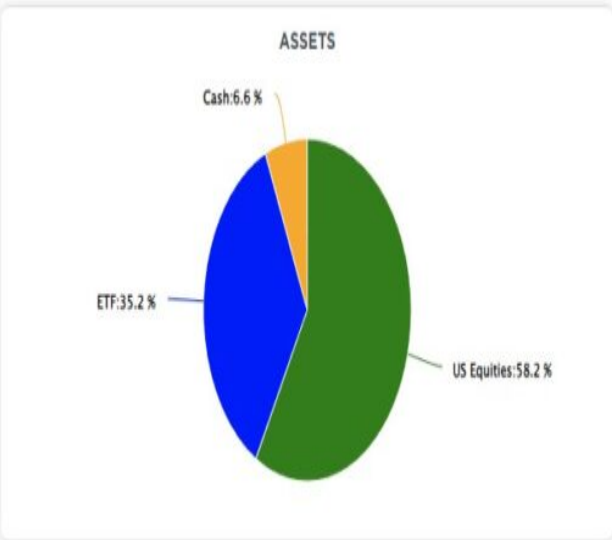
Personally, I think Powell is bluffing. He didn't want to declare Mission Accomplished, which would cause stocks and bonds to rally wildly, so he accompanied the pause with a lot of tough talk and hawkish projections. But I don't think the Fed will follow through. I think they're done raising rates and will wait and see what effect all the previous tightening has on the economy. This is also the correct course.

So what of it? Personally, I am looking to go All In on long-term treasuries. TLT is testing its 52-week low of around \$90 in the premarket but I think it will hold. And I'll use the selloff to add to my position.

I agree with that statement and added to my position in TLT on Thursday.

There are few opportunities in the market where the upside potential of an investment is clear. It will take time for economic realities to collide with the Fed's fantasy.

The Fed funds futures market has now priced in the Fed's likely terminal rate on monetary policy going into 2024. We will likely use the next oversold rally in the market to raise cash, further reduce risk, and rebalance portfolios accordingly.



See you next week.

Research Report

Real Investment Daily



"That 70s Show"

Written by Lance Roberts | Sep 22, 2023 | [Economics](#)

The hit TV series "That 70s Show" aired from 1998 to 2006 and focused on six teenage friends living...

[> Read More](#)

Real Investment Daily



"That 70s Show"

Written by Lance Roberts | Sep 22, 2023 | [Economics](#)

The hit TV series "That 70s Show" aired from 1998 to 2006 and focused on six teenage friends living...

[> Read More](#)

Subscribe To *?Before The Bell?* For Daily Trading Updates

We have set up a separate channel JUST for our short daily market updates. [#2013266080](#); **Please subscribe to THIS CHANNEL** [#2013266080](#); to receive daily notifications before the market opens.

[Click Here And Then Click The SUBSCRIBE Button](#)

[embed]<https://www.youtube.com/watch?v=pv9TgvqoRY8>[/embed]

[Subscribe To Our YouTube Channel To Get Notified Of All Our Videos](#)

Bull Bear Report Market Statistics & Screens

SimpleVisor™

Don't invest alone.
Tap into the power of SimpleVisor.

[> Sign up now](#)

SimpleVisor™

Don't invest alone.
Tap into the power of SimpleVisor.

[> Sign up now](#)

SimpleVisor Top & Bottom Performers By Sector

Today's Top & Bottom Performer by Sector

Click on a Symbol to see details below

Healthcare

STE	ISRG	CRL	A	UNH
2.27%	2.03%	1.9%	1.45%	1.38%
HUM	GEHC	WAT	UHS	IQV
1%	0.96%	0.91%	0.85%	0.8%
VTRS	INCY	ZBH	OGN	PODD
-0.62%	-0.7%	-0.7%	-0.81%	-1.16%
DXCM	BAX	WBA	CTLT	DVA
-1.23%	-1.25%	-1.31%	-1.78%	-2.78%

Industrials

J	PCAR	TT	VRSK	CARR
1.77%	1.7%	1.55%	1.46%	1.43%
ROK	ETN	CMI	AVY	PH
1.39%	1.37%	1.12%	1.07%	1.07%
UNP	BA	RTX	GD	GNRC
-0.79%	-0.9%	-1.09%	-1.14%	-1.23%
DAL	UAL	ALK	DE	NOC
-1.27%	-1.32%	-1.36%	-1.86%	-2.27%

Technology

ON	WDC	LRCX	MPWR	NXPI
3.46%	3.13%	2.83%	2.63%	2.45%
KLAC	MU	AVGO	AMAT	MCHP
2.42%	2.42%	2.36%	2.13%	2.12%
MSFT	CRM	INTC	PAYC	LDOS
-0.13%	-0.26%	-0.52%	-0.75%	-0.76%
CDAY	SEDG	FIS	FSLR	ENPH
-0.81%	-0.81%	-1.03%	-2.09%	-3.13%

Financial

FDS	AIZ	CBOE	MKTX	ACGL
2.27%	1.44%	1.28%	1.18%	1.16%
MMC	MCO	WRB	CB	AFL
0.67%	0.64%	0.64%	0.58%	0.56%
SCHW	STT	MTB	BAC	IVZ
-1.04%	-1.1%	-1.14%	-1.23%	-1.26%
RF	SYF	MS	FITB	WFC
-1.41%	-1.41%	-1.5%	-1.71%	-2.12%

Consumer Goods

EL	COST	STZ	HSY	KO
1.5%	1.15%	0.92%	0.63%	0.63%
WMT	PEP	CHD	KDP	MDLZ
0.54%	0.42%	0.32%	0.3%	0.3%
SYT	MO	LW	SJM	DG
-0.83%	-0.89%	-1.12%	-1.14%	-1.29%
PM	ADM	BG	TGT	TSN
-1.49%	-1.5%	-2%	-2.25%	-3.05%

Utilities

NEE	NRG	XEL	PEG	AEE
1.85%	1.57%	1.07%	0.49%	0.4%
CEG	ED	PPL	CNP	D
0.36%	0.36%	0.34%	0.28%	0.23%
FE	EVRG	PNW	WEC	AEP
-0.15%	-0.23%	-0.23%	-0.28%	-0.38%
AWK	NI	EIX	ES	AES
-0.39%	-0.67%	-0.81%	-0.83%	-2.65%

Materials

STLD	NEM	PPG	NUE	CF
2.08%	1.42%	1.41%	1.23%	1.08%
ECL	FCX	DD	LIN	SHW
0.76%	0.52%	0.4%	0.29%	0.23%
MLM	IFF	ALB	LYB	CE
-0.22%	-0.38%	-0.39%	-0.59%	-0.84%
VMC	EMN	FMC	DOW	MOS
-0.9%	-1.16%	-1.42%	-1.61%	-2.61%

Consumer Cyclical

F	BWA	BKNG	ORLY	AZO
2.62%	1.92%	1.71%	1.55%	1.41%
NVR	DPZ	SBUX	WYNN	CMG
1.35%	1.1%	1.1%	1.04%	0.98%
CCL	TPR	VFC	KMX	RCL
-1.18%	-1.4%	-1.47%	-1.48%	-1.78%
TSLA	BBWI	CZR	MHK	NCLH
-1.87%	-2.08%	-2.24%	-2.45%	-3.63%

Real Estate

EXR	IRM	PSA	COR	DLR
1.53%	1.37%	1.26%	0.88%	0.83%
FRT	EQIX	PLD	CBRE	SPG
0.77%	0.74%	0.73%	0.69%	0.69%
BXP	AVB	UDR	CCI	VICI
-0.02%	-0.13%	-0.15%	-0.16%	-0.25%
MAA	ARE	EQR	AMT	SBAC
-0.3%	-0.36%	-0.39%	-0.67%	-0.67%

Energy

TRGP	WMB	MRO	BKR	CVX
1.85%	1.18%	1.14%	1.07%	0.89%
SLB	XOM	COP	OXY	DVN
0.71%	0.67%	0.55%	0.5%	0.48%
APA	HES	PXD	VLO	EQT
0.19%	0.11%	0.05%	0.01%	-0.15%
MPC	FI	EOG	FANG	PSX
-0.25%	-0.27%	-0.29%	-0.46%	-0.62%

Communication Services

TTWO	META	ATVI	EA	GOOG
2.27%	1.87%	1.73%	0.98%	0.91%
CHTR	TMUS	CMCSA	VZ	LYV
0.29%	0.14%	0.13%	0.11%	-0.11%
OMC	IPG	DIS	T	NWSA
-0.54%	-0.65%	-0.78%	-0.78%	-0.87%
NWS	FOXA	FOX	WBD	PARA
-0.97%	-1.1%	-1.18%	-2.22%	-4.02%

Today's Top & Bottom Performer by Sector

Click on a Symbol to see details below

Healthcare

STE	ISRG	CRL	A	UNH
2.27%	2.03%	1.9%	1.45%	1.38%
HUM	GEHC	WAT	UHS	IQV
1%	0.96%	0.91%	0.85%	0.8%
VTRS	INCY	ZBH	OGN	PODD
-0.62%	-0.7%	-0.7%	-0.81%	-1.16%
DXCM	BAX	WBA	CTLT	DVA
-1.23%	-1.25%	-1.31%	-1.78%	-2.78%

Industrials

J	PCAR	TT	VRSK	CARR
1.77%	1.7%	1.55%	1.46%	1.43%
ROK	ETN	CMI	AVY	PH
1.39%	1.37%	1.12%	1.07%	1.07%
UNP	BA	RTX	GD	GNRC
-0.79%	-0.9%	-1.09%	-1.14%	-1.23%
DAL	UAL	ALK	DE	NOC
-1.27%	-1.32%	-1.36%	-1.86%	-2.27%

Technology

ON	WDC	LRCX	MPWR	NXPI
3.46%	3.13%	2.83%	2.63%	2.45%
KLAC	MU	AVGO	AMAT	MCHP
2.42%	2.42%	2.36%	2.13%	2.12%
MSFT	CRM	INTC	PAYC	LDOS
-0.13%	-0.26%	-0.52%	-0.75%	-0.76%
CDAY	SEDG	FIS	FSLR	ENPH
-0.81%	-0.81%	-1.03%	-2.09%	-3.13%

Financial

FDS	AIZ	CBOE	MKTX	ACGL
2.27%	1.44%	1.28%	1.18%	1.16%
MMC	MCO	WRB	CB	AFL
0.67%	0.64%	0.64%	0.58%	0.56%
SCHW	STT	MTB	BAC	IVZ
-1.04%	-1.1%	-1.14%	-1.23%	-1.26%
RF	SYF	MS	FITB	WFC
-1.41%	-1.41%	-1.5%	-1.71%	-2.12%

Consumer Goods

EL	COST	STZ	HSY	KO
1.5%	1.15%	0.92%	0.63%	0.63%
WMT	PEP	CHD	KDP	MDLZ
0.54%	0.42%	0.32%	0.3%	0.3%
SYT	MO	LW	SJM	DG
-0.83%	-0.89%	-1.12%	-1.14%	-1.29%
PM	ADM	BG	TGT	TSN
-1.49%	-1.5%	-2%	-2.25%	-3.05%

Utilities

NEE	NRG	XEL	PEG	AEE
1.85%	1.57%	1.07%	0.49%	0.4%
CEG	ED	PPL	CNP	D
0.36%	0.36%	0.34%	0.28%	0.23%
FE	EVRG	PNW	WEC	AEP
-0.15%	-0.23%	-0.23%	-0.28%	-0.38%
AWK	NI	EIX	ES	AES
-0.39%	-0.67%	-0.81%	-0.83%	-2.65%

Materials

STLD	NEM	PPG	NUE	CF
2.08%	1.42%	1.41%	1.23%	1.08%
ECL	FCX	DD	LIN	SHW
0.76%	0.52%	0.4%	0.29%	0.23%
MLM	IFF	ALB	LYB	CE
-0.22%	-0.38%	-0.39%	-0.59%	-0.84%
VMC	EMN	FMC	DOW	MOS
-0.9%	-1.16%	-1.42%	-1.61%	-2.61%

Consumer Cyclical

F	BWA	BKNG	ORLY	AZO
2.62%	1.92%	1.71%	1.55%	1.41%
NVR	DPZ	SBUX	WYNN	CMG
1.35%	1.1%	1.1%	1.04%	0.98%
CCL	TPR	VFC	KMX	RCL
-1.18%	-1.4%	-1.47%	-1.48%	-1.78%
TSLA	BBWI	CZR	MHK	NCLH
-1.87%	-2.08%	-2.24%	-2.45%	-3.63%

S&P 500 Weekly Tear Sheet



S&P 500 Market Cap Analysis

S&P 500 Asset Allocation

Momentum Analysis

3 Month SPY Price

The chart displays the price of SPY over a 3-month period. The y-axis ranges from 380 to 470 in increments of 10. The x-axis represents time, with major ticks at 1, 2, 3, 4, 5, 6, 7, 8, 9, 10, 11, and 12. The price starts at approximately 415, rises to a peak of about 458 in month 7, and then declines to around 438 by month 12. A blue area chart shows the daily price movement, a black dotted line shows the monthly average, and an orange dashed line shows the linear trend.

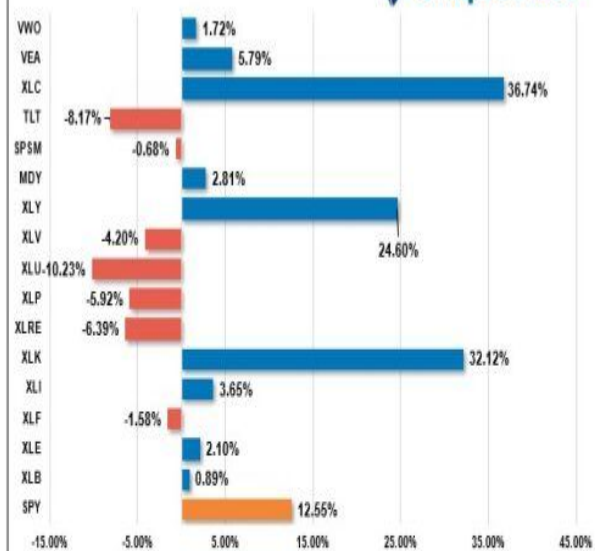
Month	Price
1	415
2	425
3	430
4	435
5	440
6	445
7	458
8	450
9	445
10	440
11	445
12	438

SPY RISK INFO				
Item	T 2-Yr	T 1-Yr.	YTD	% Diff YTD/T1-YR
Price Return	(1.70%)	15.02%	12.55%	(16.44%)
Max Drawdown	(27.47%)	(9.00%)	(9.00%)	0.00%
Sharpe	(0.01)	0.75	1.07	0.43
Sortino	0.02	1.30	1.81	0.39
Volatility	19.69	17.36	13.44	(0.23)
Daily VaR-5%	(29.33)	(11.04)	(2.47)	(0.78)
Mnthly VaR-5%	(28.76)	(12.70)	10.78	(1.85)

Relative Performance Analysis

After the sell-off last week, most markets and sectors are now very oversold. Furthermore, the deviations of many of those markets and sectors below the 50-DMA suggest a decent counter-trend rally is likely starting this week. While we are likely not clear of the seasonally weak period as of yet, the downside from current levels is likely very limited. Look to use current weaknesses to add exposure to portfolios accordingly.

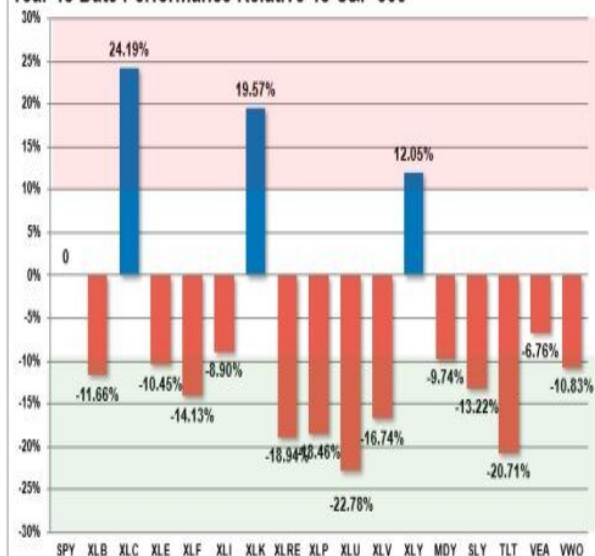
Year To Date Performance



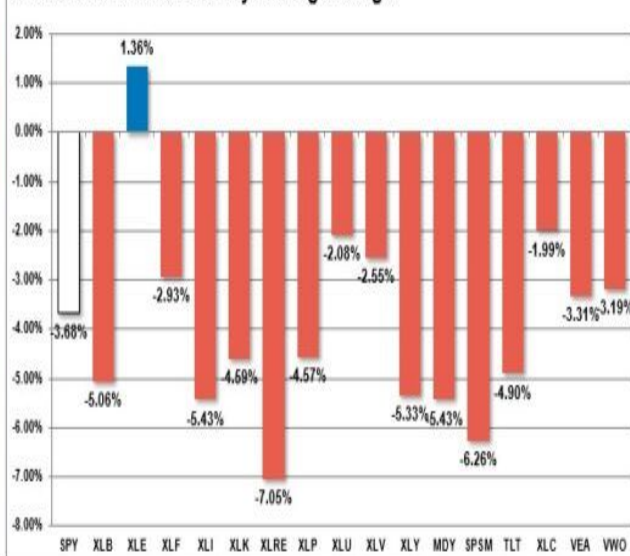
YTD Price - S&P Sectors Recalibrated To \$50/share



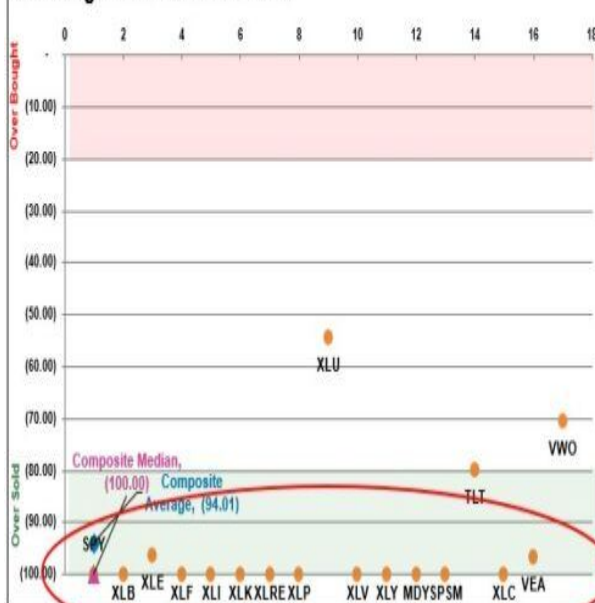
Year To Date Performance Relative To S&P 500



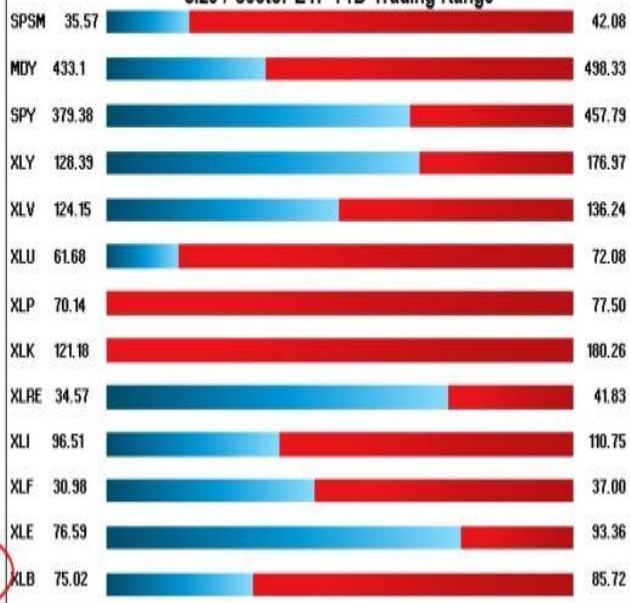
Price Deviation From 50-Day Moving Average



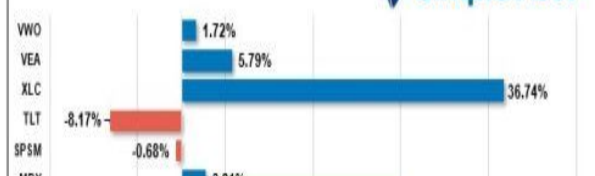
Overbought/Oversold 14-Periods



Size / Sector ETF YTD Trading Range



Year To Date Performance



YTD Price - S&P Sectors Recalibrated To \$50/share



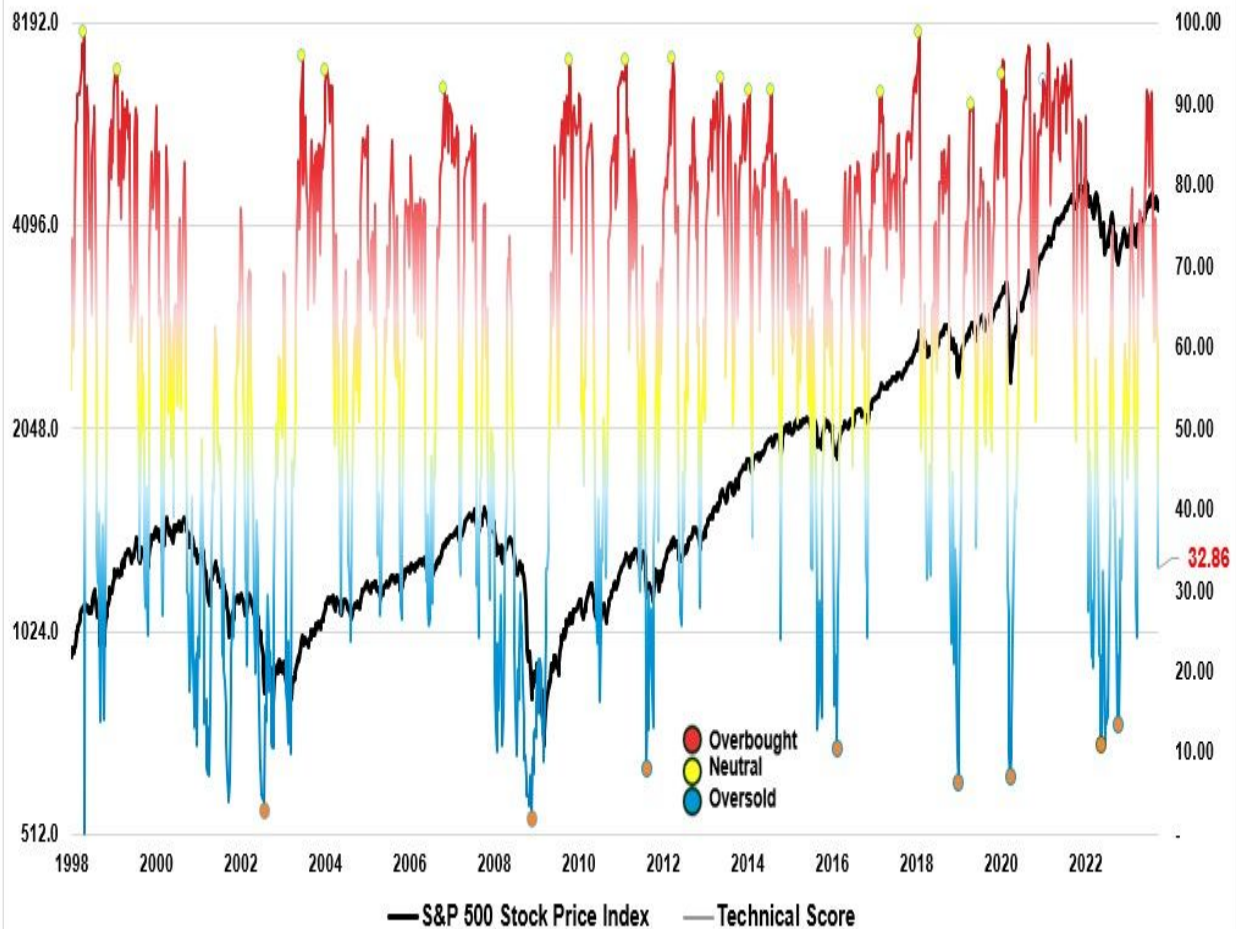
Technical Composite

*The technical overbought/sold gauge comprises several price indicators (R.S.I., Williams %R, etc.), measured using weekly closing price data. Readings above 80 are considered overbought, and below 20 are oversold. The market peaks when those readings are 80 or above, suggesting prudent profit-taking and risk management. **The best buying opportunities exist when those readings are 20 or below.***

The current reading is 32.86 out of a possible 100.

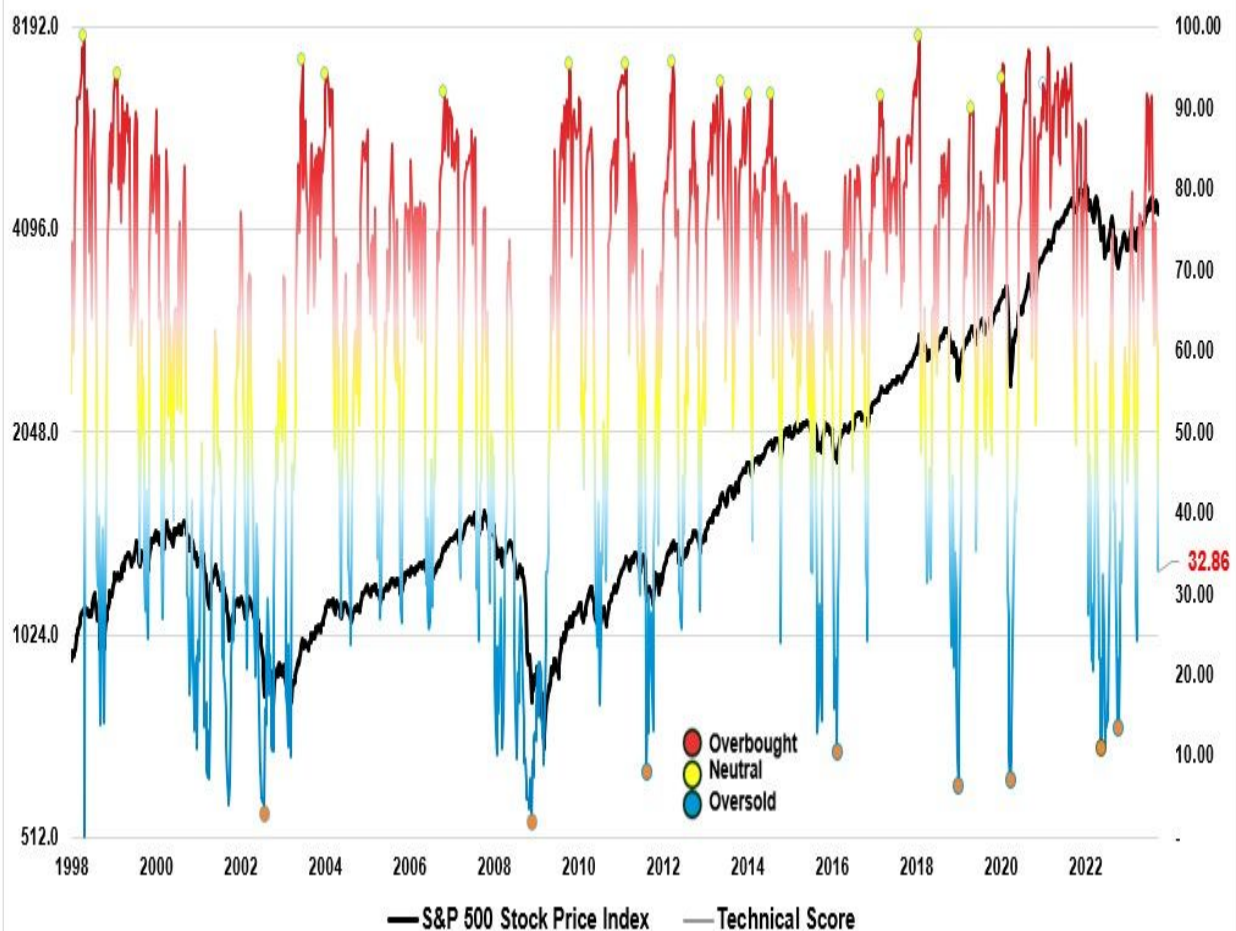
Technical Overbought/Sold Composite

(Composite Of Weekly Technical Measures)



Technical Overbought/Sold Composite

(Composite Of Weekly Technical Measures)



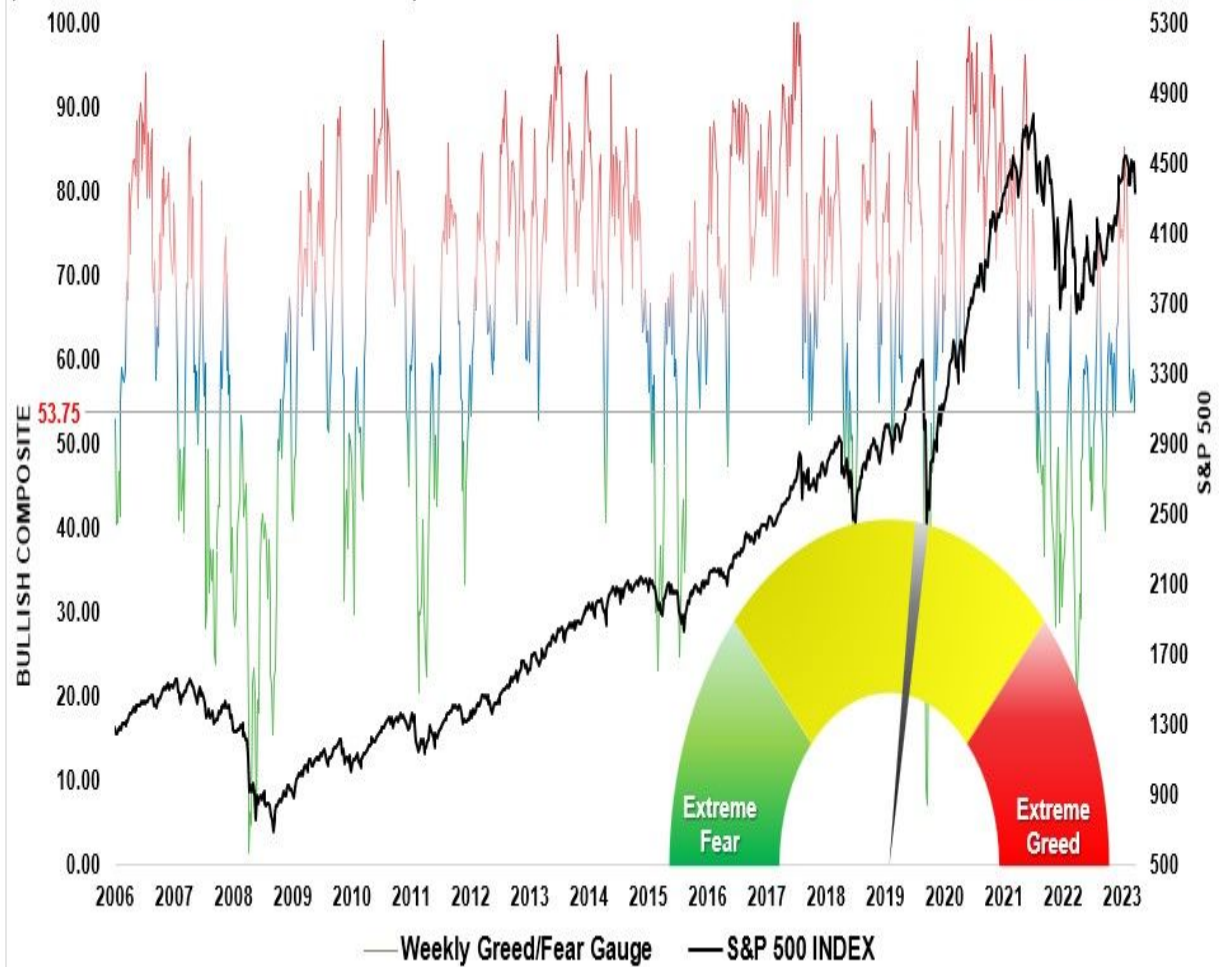
Portfolio Positioning ?Fear / Greed? Gauge

The ?Fear/Greed? gauge is how individual and professional investors are ?positioning? themselves in the market based on their equity exposure. From a contrarian position, the higher the allocation to equities, the more likely the market is closer to a correction than not. The gauge uses weekly closing data.

NOTE: The Fear/Greed Index measures risk from 0 to 100. It is a rarity that it reaches levels above 90. The current reading is 53.75 out of a possible 100.

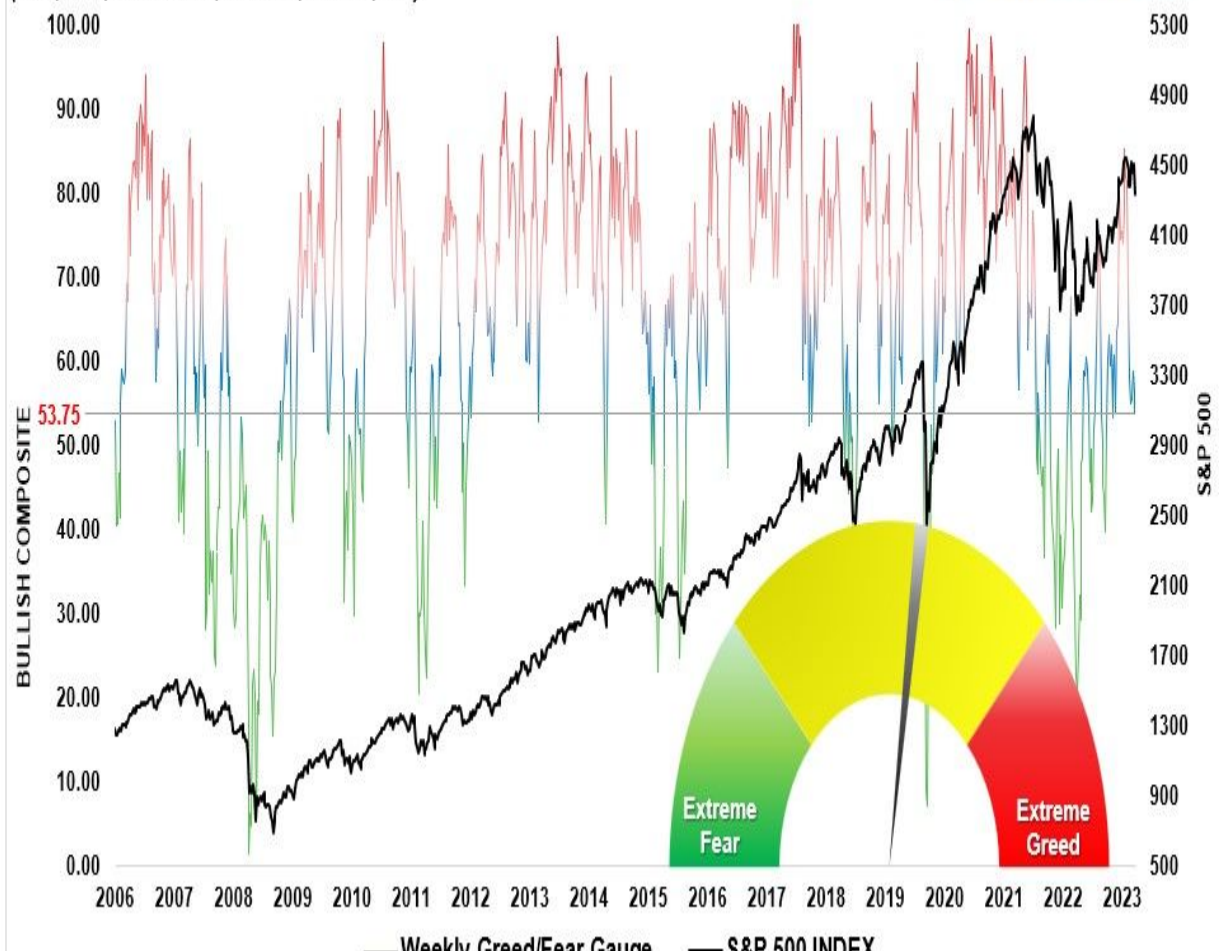
MARKET GREED/FEAR INDEX

(AAII, INVI, Bullish Pct, Put/Call, NAAIM, VIX)



MARKET GREED/FEAR INDEX

(AAII, INVI, Bullish Pct, Put/Call, NAAIM, VIX)



Relative Sector Analysis

Relative Analysis of Sectors against SPY

(click sector symbol for sector details including a relative analysis of its top ten holdings)

Materials (XLB) -0.52 »	Real Estate (XLRE) -0.52 »	Transportation (XTN) -0.29 »	Industrials (XLI) -0.27 »	Consumer Staples (XLP) -0.14 »	Consumer Discretionary (XLY) -0.11 »
Technology (XLK) 0.02 »	Health Care (XLV) 0.05 »	Financial (XLF) 0.10 »	Energy (XLE) 0.19 »	Utilities (XLU) 0.21 »	Communication Services (XLC) 0.52 »

Overbought - could be a good time to reduce holdings. Oversold - could be a good time to increase holdings

About Relative Analysis

This analysis uses the price ratio of two securities to establish a relative technical score. 13 technical measures are applied to the ratio to determine the score. The score tells us how one stock compares to another stock. We like to compare sector ETFs to the S&P 500 to help assess relative strength or weakness of the sectors.

Quite often scores of + .75 or greater are good times to reduce holdings and - .75 are good times to buy. However, scores can stay extremely overbought or sold for a few weeks so at times patience is required.

Relative Analysis of Sectors against SPY

(click sector symbol for sector details including a relative analysis of its top ten holdings)

Materials (XLB) -0.52 »	Real Estate (XLRE) -0.52 »	Transportation (XTN) -0.29 »	Industrials (XLI) -0.27 »	Consumer Staples (XLP) -0.14 »	Consumer Discretionary (XLY) -0.11 »
Technology (XLK) 0.02 »	Health Care (XLV) 0.05 »	Financial (XLF) 0.10 »	Energy (XLE) 0.19 »	Utilities (XLU) 0.21 »	Communication Services (XLC) 0.52 »

Overbought - could be a good time to reduce holdings. Oversold - could be a good time to increase holdings

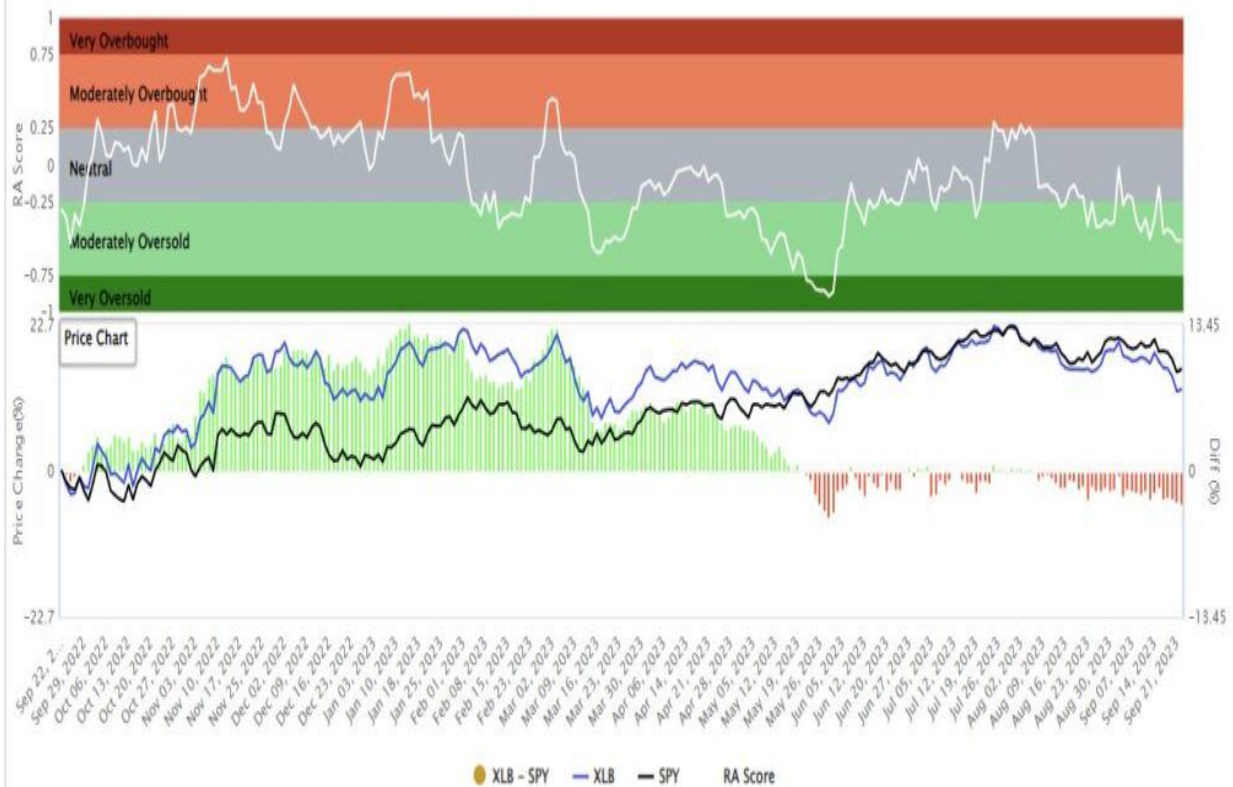
About Relative Analysis

This analysis uses the price ratio of two securities to establish a relative technical score. 13 technical measures are applied to the ratio to determine the score. The score tells us how one stock compares to another stock. We like to compare sector ETFs to the S&P 500 to help assess relative strength or weakness of the sectors.

Quite often scores of + .75 or greater are good times to reduce holdings and - .75 are good times to buy. However, scores can stay extremely overbought or sold for a few weeks so at times patience is required.

Most Oversold Sector Analysis

XLB (Materials) / SPY - Analysis



Description

In seeking to track the performance of the index, the fund employs a replication strategy. It generally invests substantially all, but at least 95%, of its total assets in the securities comprising the index. The index includes securities of companies from the following industries: chemicals; metals and mining; paper and forest products; containers and packaging; and construction materials. The fund is non-diversified.

Latest Price (Jan 20, 1970, 8:56:43 AM)

\$78.67 ▲ (\$0.22) (0.27%)

Last Close

\$78.45

Open

\$78.66

Volume

3,203,256

Annual Div.

\$1.39

52 Week Range

\$66.85

\$85.90

Day Range

\$78.47

\$79.05

Avg. Volume (3m)

N/A

Div. Yield

1.77%

Symbol	Name	Holdings	APD/	CTVA/	DD/	DOW/	ECL/	FCX/	NUE/	PPG/	SHW/	LIN/	XLB/	
LIN	Linde PLC	20.39%	0.00	-0.04	0.04	-0.66	0.04	-0.39	-0.38	-0.15	-0.16	0.08	-0.10	APD
APD	Air Products & Chemicals Inc	7.06%	0.04	0.00	-0.05	-0.39	-0.13	-0.29	-0.20	-0.40	-0.15	-0.03	-0.15	CTVA
SHW	Sherwin-Williams Co	6.86%	-0.04	0.05	0.00	-0.70	-0.22	-0.67	-0.47	-0.53	-0.39	0.08	-0.45	DD
FCX	Freeport-McMoRan Inc	6.16%	0.66	0.39	0.70	0.00	0.48	-0.01	-0.03	0.29	0.26	0.76	0.46	DOW
ECL	Ecolab Inc	4.90%	-0.04	0.13	0.22	-0.48	0.00	-0.41	-0.40	-0.19	-0.07	0.18	0.02	ECL
NUE	Nucor Corp	4.65%	0.39	0.29	0.67	0.01	0.41	0.00	0.13	0.11	0.42	0.68	0.31	FCX
DOW	Dow Inc	4.15%	0.38	0.20	0.47	0.03	0.40	-0.13	0.00	0.06	0.50	0.51	0.33	NUE
CTVA	Corteva Inc	3.86%	0.15	0.40	0.53	-0.29	0.19	-0.11	-0.06	0.00	0.14	0.38	0.05	PPG
DD	DuPont de Nemours Inc	3.80%	0.16	0.15	0.39	-0.26	0.07	-0.42	-0.50	-0.14	0.00	0.21	0.08	SHW
PPG	PPG Industries Inc	3.59%	-0.08	0.03	-0.08	-0.76	-0.18	-0.68	-0.51	-0.38	-0.21	0.00	-0.40	LIN
			0.10	0.15	0.45	-0.46	-0.02	-0.31	-0.33	-0.05	-0.08	0.40	0.00	XLB

XLB (Materials) / SPY - Analysis

Sector Model Analysis & Risk Ranges

How To Read This Table

- *The table compares the relative performance of each sector and market to the S&P 500 index.*
- *?MA XVER? (Moving Average Crossover) is determined by the short-term weekly moving average crossing positively or negatively with the long-term weekly moving average.*
- *The risk range is a function of the month-end closing price and the ?beta? of the sector or market. (Ranges reset on the 1st of each month)*
- *The table shows the price deviation above and below the weekly moving averages.*

The sell-off this past week pushed many sectors and markets below their normal monthly trading ranges. These more oversold conditions will likely precede a reflexive rally starting this week. In particular, Financials, Technology, Industrials, Materials, Communications, and Transports are the highlighted sectors to watch for leadership. Small and Mid-capitalization stocks and Bonds are the major markets to watch for a rally.

RELATIVE PERFORMANCE		Current	PERFORMANCE RELATIVE TO S&P 500 INDEX					SHORT	MONTH END		REL S&P	RISK RANGE		% DEV -	% DEV -	MIA XVER
Ticker	ETF NAME	Price	1 Week	4 Week	12 Weeks	24 Weeks	52 Weeks	WMA	LONG WMA	PRICE	BETA	HIGH	LOW	Short MIA	Long MIA	SIGNAL
IVV	ISHARS-SP500	434.30	(2.85)	(1.83)	(2.56)	5.67	16.93	448.07	426.34	452.69	1.00	464.01	441.37	-3%	2%	BULLISH
XLB	SPOR-MATLS SELS	78.37	(1.24)	(1.17)	(2.87)	(7.25)	(2.40)	82.42	80.86	82.89	1.08	85.86	79.92	-5%	-3%	BULLISH
XLC	SPOR-COMM SV SS	66.62	0.05	2.20	3.39	5.69	16.69	66.60	61.51	67.73	1.03	70.12	65.34	-1%	7%	BULLISH
XLE	SPOR-EGY SELS	89.31	(0.08)	3.80	12.59	(0.57)	9.79	86.60	84.18	88.92	1.37	92.36	85.48	3%	6%	BULLISH
XLF	SPOR-FINL SELS	33.66	(0.51)	0.86	2.41	(0.45)	(8.52)	34.45	33.81	34.38	1.07	35.61	33.15	-2%	0%	BULLISH
XLK	SPOR-TECH SELS	164.41	0.19	(0.72)	(2.88)	4.62	15.94	172.29	158.51	175.66	1.12	182.03	169.29	-5%	4%	BULLISH
XLI	SPOR-INDU SELS	101.79	(0.21)	(2.63)	(2.59)	(1.55)	3.18	107.48	103.14	108.23	1.12	112.15	104.31	-5%	-1%	BULLISH
XLP	SPOR-CONS STPL	70.14	0.20	(1.32)	(2.87)	(12.59)	(15.83)	73.61	73.95	72.76	0.59	75.01	70.51	-5%	-5%	BEARISH
XLRE	SPOR-RE SELS	34.57	(3.18)	(3.32)	(5.72)	(12.49)	(24.64)	37.33	37.41	37.02	0.85	38.26	35.78	-7%	-8%	BEARISH
XLU	SPOR-UTIL SELS	63.29	0.31	1.30	(0.73)	(15.01)	(28.73)	64.89	66.32	62.96	0.53	64.87	61.05	-2%	-5%	BEARISH
XLV	SPOR-HLTH CR	130.15	1.31	(0.61)	0.62	(8.19)	(10.88)	132.95	131.56	133.21	0.69	137.46	128.96	-2%	-1%	BULLISH
XLY	SPOR-CONS DISCR	160.93	(3.47)	(0.43)	(2.67)	5.37	(7.02)	169.96	157.28	170.71	1.19	177.01	164.41	-5%	2%	BULLISH
XTN	SPOR-SP TRANSP	74.58	(1.34)	(3.55)	(8.38)	0.98	(1.28)	82.29	77.40	80.44	1.36	83.55	77.33	-9%	-4%	BULLISH
SDY	SPOR-SP DIV ETF	117.04	0.50	(1.41)	(1.96)	(10.45)	(15.60)	122.52	123.13	122.25	0.86	126.36	118.14	-4%	-5%	BEARISH
RSP	INVS-SP5 EQ ETF	142.09	(0.46)	(1.24)	(2.08)	(5.95)	(7.57)	149.85	146.77	149.92	1.06	155.26	144.58	-6%	-3%	BULLISH
SPSM	SPOR-PRT SC	36.72	(0.62)	(2.32)	(2.90)	(5.75)	(10.37)	39.08	38.41	39.28	1.15	40.71	37.85	-6%	-4%	BULLISH
MDY	SPOR-SP MC 400	455.24	0.01	(1.65)	(2.38)	(3.74)	(5.32)	480.58	467.84	483.57	1.13	501.14	466.00	-5%	-3%	BULLISH
EEM	ISHARS-EMG MKT	38.47	1.17	0.70	(0.20)	(8.00)	(10.01)	39.72	39.47	39.17	0.76	40.45	37.89	-3%	-3%	BULLISH
EFA	ISHARS-EAFE	69.90	0.78	1.36	(1.03)	(8.50)	6.22	71.86	71.67	71.53	0.87	73.94	69.12	-3%	-2%	BULLISH
IAU	ISHARS-GOLD TR	36.46	2.96	2.38	2.75	(9.85)	0.00	36.55	36.72	36.75	0.15	37.72	35.78	0%	-1%	BEARISH
GDX	VANECK-GOLD MNR	28.87	(0.01)	3.49	(1.56)	(21.82)	11.72	29.67	30.75	29.26	0.79	30.22	28.30	-3%	-8%	BEARISH
UUP	INVS-DB US\$ BU	29.53	3.23	3.63	6.61	0.79	(19.54)	28.59	28.26	28.89	(0.16)	29.57	28.21	3%	4%	BULLISH
BOND	PIMCO-ACTV BOND	88.73	2.12	0.88	(0.59)	(10.63)	(19.60)	90.33	91.50	90.57	0.17	92.99	88.15	-2%	-3%	BEARISH
TLT	ISHARS-20+YTB	91.43	1.21	(2.15)	(8.62)	(21.42)	(30.43)	97.29	101.39	96.64	0.06	99.11	94.17	-6%	-10%	BEARISH
BNOX	VANGD-TTL INT B	48.16	2.62	1.15	1.09	(7.40)	(16.72)	48.49	48.55	48.76	0.13	50.04	47.48	-1%	-1%	BEARISH
HYG	ISHARS-IBX HCYB	74.00	1.99	1.02	1.13	(6.79)	(14.34)	74.74	74.64	75.28	0.43	77.48	73.08	-1%	-1%	BULLISH



RISK RANGE REPORT



RELATIVE PERFORMANCE		Current	PERFORMANCE RELATIVE TO S&P 500 INDEX					SHORT		MONTH END	REL S&P	RISK RANGE		% DEV -	% DEV -	MIA XVER
Ticker	ETF NAME	Price	1 Week	4 Week	12 Weeks	24 Weeks	52 Weeks	WMA	LONG WMA	PRICE	BETA	HIGH	LOW	Short MIA	Long MIA	SIGNAL
IVV	ISHARS-SP500	434.30	(2.85)	(1.83)	(2.56)	5.67	16.93	448.07	426.34	452.69	1.00	464.01	441.37	-3%	2%	BULLISH
XLB	SPOR-MATLS SELS	78.37	(1.24)	(1.17)	(2.87)	(7.25)	(2.40)	82.42	80.86	82.89	1.08	85.86	79.92	-5%	-3%	BULLISH
XLC	SPOR-COMM SV SS	66.62	0.05	2.20	3.39	5.69	16.69	66.60	61.51	67.73	1.03	70.12	65.34	-1%	7%	BULLISH
XLE	SPOR-EGY SELS	89.31	(0.08)	3.80	12.59	(0.57)	9.79	86.60	84.18	88.92	1.37	92.36	85.48	3%	6%	BULLISH
XLF	SPOR-FINL SELS	33.66	(0.51)	0.86	2.41	(0.45)	(8.52)	34.45	33.81	34.38	1.07	35.61	33.15	-2%	0%	BULLISH
XLK	SPOR-TECH SELS	164.41	0.19	(0.72)	(2.88)	4.62	15.94	172.29	158.51	175.66	1.12	182.03	169.29	-5%	4%	BULLISH
XLJ	SPOR-INDU SELS	101.79	(0.21)	(2.63)	(2.59)	(1.55)	3.18	107.48	103.14	108.23	1.12	112.15	104.31	-5%	-1%	BULLISH
XLP	SPOR-CONS STPL	70.14	0.20	(1.32)	(2.87)	(12.59)	(15.83)	73.61	73.95	72.76	0.59	75.01	70.51	-5%	-5%	BEARISH
XLRE	SPOR-RE SELS	34.57	(3.18)	(3.32)	(5.72)	(12.49)	(24.64)	37.33	37.41	37.02	0.85	38.26	35.78	-7%	-8%	BEARISH
XLU	SPOR-UTIL SELS	63.29	0.31	1.30	(0.73)	(15.01)	(28.73)	64.89	66.32	62.96	0.53	64.87	61.05	-2%	-5%	BEARISH
XLV	SPOR-HLTH CR	130.15	1.31	(0.61)	0.62	(8.19)	(10.88)	132.95	131.56	133.21	0.69	137.46	128.96	-2%	-1%	BULLISH
XLY	SPOR-CONS DISCR	160.93	(3.47)	(0.43)	(2.67)	5.37	(7.02)	169.96	157.28	170.71	1.19	177.01	164.41	-5%	2%	BULLISH
XTN	SPOR-SP TRANSP	74.58	(1.34)	(3.55)	(8.38)	0.98	(1.28)	82.29	77.40	80.44	1.36	83.55	77.33	-9%	-4%	BULLISH
SDY	SPOR-SP DIV ETF	117.04	0.50	(1.41)	(1.96)	(10.45)	(15.60)	122.52	123.13	122.25	0.86	126.36	118.14	-4%	-5%	BEARISH
RSP	INVS-SP5 EQ ETF	142.09	(0.46)	(1.24)	(2.08)	(5.95)	(7.57)	149.85	146.77	149.92	1.06	155.26	144.58	-5%	-3%	BULLISH
SPSM	SPOR-PRT SC	36.72	(0.62)	(2.32)	(2.90)	(5.75)	(10.37)	39.08	38.41	39.28	1.15	40.71	37.85	-6%	-4%	BULLISH
MDY	SPOR-SP MC 400	455.24	0.01	(1.65)	(2.38)	(3.74)	(5.32)	480.58	467.84	483.57	1.13	501.14	466.00	-5%	-3%	BULLISH
EEM	ISHARS-EMG MKT	38.47	1.17	0.70	(0.20)	(8.00)	(10.01)	39.72	39.47	39.17	0.76	40.45	37.89	-3%	-3%	BULLISH
EFA	ISHARS-EAFE	69.90	0.78	1.36	(1.03)	(8.50)	6.22	71.86	71.67	71.53	0.87	73.94	69.12	-3%	-2%	BULLISH
IAU	ISHARS-GOLD TR	36.46	2.96	2.38	2.75	(9.85)	0.00	36.55	36.72	36.75	0.15	37.72	35.78	0%	-1%	BEARISH
GDX	VANECK-GOLD MNR	28.87	(0.01)	3.49	(1.56)	(21.82)	11.72	29.67	30.75	29.26	0.79	30.22	28.30	-3%	-8%	BEARISH
UUP	INVS-DB US\$ BU	29.53	3.23	3.63	6.61	0.79	(19.54)	28.59	28.26	28.89	(0.16)	29.57	28.21	3%	4%	BULLISH
BOND	PIMCO-ACTV BOND	88.73	2.12	0.88	(0.59)	(10.63)	(19.60)	90.33	91.50	90.57	0.17	92.99	88.15	-2%	-3%	BEARISH
TLT	ISHARS-20+YTB	91.43	1.21	(2.15)	(8.62)	(21.42)	(30.43)	97.29	101.39	96.64	0.06	99.11	94.17	-6%	-10%	BEARISH
BNOX	VANGD-TTL INT B	48.16	2.62	1.15	1.09	(7.40)	(16.72)	48.49	48.55	48.76	0.13	50.04	47.48	-1%	-1%	BEARISH
HYG	ISHARS-IBX HCYB	74.00	1.99	1.02	1.13	(6.79)	(14.34)	74.74	74.64	75.28	0.43	77.48	73.08	-1%	-1%	BULLISH



RISK RANGE REPORT



Weekly SimpleVisor Stock Screens

We provide three stock screens each week from [SimpleVisor](#).

This week, we are searching for the Top 20:

- *Relative Strength Stocks*
- *Momentum Stocks*
- *Fundamental & Technical Strength*

(Click Images To Enlarge)

R.S.I. Screen

Scan Result: 20 Item(s) found													
<div>Tables</div> <div>OverviewTechnicalsFundamentalsPerformancePerformance Chart</div>													
Symbol ↑↓ ∇	Sector ↑↓	Trend ↑↓	Last ↑↓	FairValue ↑↓	RSI ↑↓	20 SMA ② ↑↓	50 SMA ② ↑↓	100 SMA ② ↑↓	Mohanram ② ↑↓	Piotroski ② ↑↓	SV Rank ② ↑↓	Yield%	
ADBE	Technology	10/10	\$516.95	\$476.77(-8.43%)	58.85	\$536.06(-3.57%)	\$511.32(1.10%)	\$444.66(16.26%)	6	7	3	%	
AMZN	Consumer Cyclical	10/10	\$130.35	\$25.20(-417.24%)	67.55	\$136.62(-4.59%)	\$134.44(-3.05%)	\$126.05(3.41%)	6	7	3	%	
CCL	Consumer Cyclical	10/10	\$14.27	()	42.43	\$16.32(-12.59%)	\$15.96(-10.62%)	\$12.94(10.24%)	1	—	3	%	
EQT	Energy	10/10	\$38.71	()	52.69	\$42.80(-9.57%)	\$41.64(-7.05%)	\$38.80(-0.24%)	1	5	3	1.41%	
ETN	Industrials	10/10	\$213.86	\$74.30(-187.83%)	58.73	\$218.94(-2.32%)	\$196.67(8.74%)	\$181.57(17.78%)	7	8	3	1.55%	
FLT	Technology	10/10	\$270.84	\$281.18(3.68%)	67.07	\$260.13(4.12%)	\$248.59(8.95%)	\$230.08(17.71%)	6	7	3	%	
GE	Industrials	10/10	\$112.49	\$124.54(9.68%)	60.58	\$113.09(-0.53%)	\$109.62(2.62%)	\$103.05(9.16%)	1	5	5	0.28%	
GOOGL	Technology	10/10	\$131.46	()	70.71	\$132.14(-0.51%)	\$126.77(3.70%)	\$121.23(8.44%)	6	8	3	%	
LLY	Healthcare	10/10	\$553.03	\$162.37(-240.60%)	82.60	\$554.01(-0.18%)	\$497.79(11.10%)	\$462.34(19.62%)	—	5	3	0.84%	
META	Communication Services	10/10	\$300.93	\$267.02(-12.70%)	55.99	\$294.62(2.14%)	\$301.60(-0.22%)	\$278.60(8.02%)	—	—	—	%	
NOW	Technology	10/10	\$555.79	\$474.78(-17.06%)	59.41	\$569.00(-2.32%)	\$566.00(-1.80%)	\$512.61(8.42%)	7	5	3	%	
NVDA	Technology	10/10	\$417.41	\$143.84(-190.19%)	48.46	\$465.40(-10.31%)	\$453.65(-7.99%)	\$403.06(3.56%)	0	6	2	0.03%	
ODFL	Industrials	10/10	\$402.55	\$371.36(-8.40%)	56.86	\$411.80(-2.25%)	\$364.15(10.54%)	\$352.57(14.17%)	6	7	3	0.35%	
PHM	Consumer Cyclical	10/10	\$74.09	()	42.86	\$81.22(-8.78%)	\$78.68(-5.83%)	\$70.07(5.74%)	4	7	2	0.74%	
SNPS	Technology	10/10	\$453.43	\$272.29(-66.52%)	60.97	\$447.44(1.34%)	\$444.34(2.05%)	\$408.15(11.09%)	1	9	2	%	
TSLA	Consumer Cyclical	10/10	\$251.41	\$303.16(17.07%)	61.66	\$246.41(2.03%)	\$259.00(-2.93%)	\$226.95(10.78%)	4	7	1	%	
PWR	Industrials	9/10	\$188.07	\$174.08(-8.04%)	51.33	\$205.05(-8.28%)	\$194.33(-3.22%)	\$177.76(5.80%)	4	8	3	0.16%	
WST	Healthcare	9/10	\$374.90	\$208.40(-79.89%)	53.09	\$395.75(-5.27%)	\$377.13(-0.59%)	\$354.65(5.71%)	0	8	2	0.19%	
TDG	Industrials	8/10	\$850.95	\$254.88(-233.86%)	51.77	\$878.00(-3.08%)	\$850.88(0.01%)	\$794.60(7.09%)	5	8	3	%	
TTWO	Communication Services	8/10	\$139.05	\$83.45(-66.62%)	51.61	\$144.09(-3.50%)	\$141.85(-1.98%)	\$129.78(7.14%)	3	5	3	%	
Scan Result: 20 Item(s) found													
<div>Tables</div> <div>OverviewTechnicalsFundamentalsPerformancePerformance Chart</div>													

Scan Result: 20 Item(s) found													
<div>Tables</div> <div>OverviewTechnicalsFundamentalsPerformancePerformance Chart</div>													
Symbol ↑↓ ∇	Sector ↑↓	Trend ↑↓	Last ↑↓	FairValue ↑↓	RSI ↑↓	20 SMA ② ↑↓	50 SMA ② ↑↓	100 SMA ② ↑↓	Mohanram ② ↑↓	Piotroski ② ↑↓	SV Rank ② ↑↓	Yield%	
ADBE	Technology	10/10	\$516.95	\$476.77(-8.43%)	58.85	\$536.06(-3.57%)	\$511.32(1.10%)	\$444.66(16.26%)	6	7	3	%	
AMZN	Consumer Cyclical	10/10	\$130.35	\$25.20(-417.24%)	67.55	\$136.62(-4.59%)	\$134.44(-3.05%)	\$126.05(3.41%)	6	7	3	%	
CCL	Consumer Cyclical	10/10	\$14.27		() 42.43	\$16.32(-12.59%)	\$15.96(-10.62%)	\$12.94(10.24%)	1	—	3	%	
EQT	Energy	10/10	\$38.71		() 52.69	\$42.80(-9.57%)	\$41.64(-7.05%)	\$38.80(-0.24%)	1	5	3	1.41%	
ETN	Industrials	10/10	\$213.86	\$74.30(-187.83%)	58.73	\$218.94(-2.32%)	\$196.67(8.74%)	\$181.57(17.78%)	7	8	3	1.55%	
FLT	Technology	10/10	\$270.84	\$281.18(3.68%)	67.07	\$260.13(4.12%)	\$248.59(8.95%)	\$230.08(17.71%)	6	7	3	%	
GE	Industrials	10/10	\$112.49	\$124.54(9.68%)	60.58	\$113.09(-0.53%)	\$109.62(2.62%)	\$103.05(9.16%)	1	5	5	0.28%	
GOOGL	Technology	10/10	\$131.46		() 70.71	\$132.14(-0.51%)	\$126.77(3.70%)	\$121.23(8.44%)	6	8	3	%	
LLY	Healthcare	10/10	\$553.03	\$162.37(-240.60%)	82.60	\$554.01(-0.18%)	\$497.79(11.10%)	\$462.34(19.62%)	—	5	3	0.84%	
META	Communication Services	10/10	\$300.93	\$267.02(-12.70%)	55.99	\$294.62(2.14%)	\$301.60(-0.22%)	\$278.60(8.02%)	—	—	—	%	
NOW	Technology	10/10	\$555.79	\$174.78(-179.06%)	59.41	\$569.00(-2.32%)	\$566.00(-1.80%)	\$512.61(8.42%)	7	5	3	%	
ODFL	Industrials	10/10	\$402.55	\$371.36(-8.40%)	56.86	\$411.80(-2.25%)	\$364.15(10.54%)	\$352.57(14.17%)	6	7	3	0.35%	
PHM	Consumer Cyclical	10/10	\$74.09		() 42.86	\$81.22(-8.78%)	\$78.68(-5.83%)	\$70.07(5.74%)	4	7	2	0.74%	
SNPS	Technology	10/10	\$453.43	\$272.29(-66.52%)	60.97	\$447.44(1.34%)	\$444.34(-0.71%)	\$408.15(11.09%)	1	9	2	%	
TSLA	Consumer Cyclical	10/10	\$251.41	\$303.16(17.07%)	61.66	\$246.41(2.03%)	\$259.00(-2.93%)	\$226.95(10.78%)	4	7	1	%	
PWR	Industrials	9/10	\$188.07	\$174.08(-8.40%)	51.33	\$205.05(-8.28%)	\$194.33(-3.22%)	\$177.76(5.80%)	4	8	3	0.16%	
WST	Healthcare	9/10	\$374.90	\$208.40(-79.89%)	53.09	\$395.75(-5.27%)	\$377.13(-0.59%)	\$354.65(5.71%)	0	8	2	0.19%	
TDG	Industrials	8/10	\$850.95	\$254.88(-233.86%)	51.77	\$878.00(-3.08%)	\$850.88(0.01%)	\$794.60(7.09%)	5	8	3	%	
TTWO	Communication Services	8/10	\$139.05	\$83.45(-66.62%)	51.61	\$144.09(-3.50%)	\$141.85(-1.98%)	\$129.78(7.14%)	3	5	3	%	

Momentum Screen

Scan Result: 20 Item(s) found													
<div> <div>Tables</div> <div>Overview</div> <div>Technicals</div> <div>Fundamentals</div> <div>Performance</div> <div>Performance Chart</div> </div>													
Symbol ↑↓ ∇	Sector ↑↓	Trend ↑↓	Last ↑↓	FairValue ↑↓	RSI ↑↓	20 SMA ② ↑↓	50 SMA ② ↑↓	100 SMA ② ↑↓	Mohanram ② ↑↓	Piotroski ② ↑↓	SV Rank ② ↑↓	Yield% ↑↓	
ADBE	Technology	10/10	\$516.95	\$476.77(-8.43%)	58.85	\$536.06(-3.57%)	\$511.32(1.10%)	\$444.66(16.26%)	6	7	3	%	
BKNG	Consumer Cyclical	10/10	\$3,088.17	() 63.80	\$3,091.58(-0.11%)	\$2,858.17(8.05%)	\$2,742.78(12.59%)		2	6	3	%	
CHTR	Communication Services	10/10	\$447.88	\$596.52(24.92%)	65.99	\$427.00(4.89%)	\$387.09(15.70%)	\$366.77(22.11%)	3	7	3	%	
INTU	Technology	10/10	\$509.79	\$562.50(9.37%)	71.01	\$512.41(-0.51%)	\$494.69(3.05%)	\$464.89(9.66%)	8	5	2	0.63%	
LLY	Healthcare	10/10	\$553.03	\$162.37(-240.60%)	82.60	\$554.01(-0.18%)	\$497.79(11.10%)	\$462.34(19.62%)	—	5	3	0.84%	
NOW	Technology	10/10	\$555.79	\$474.78(-17.06%)	59.41	\$569.00(-2.32%)	\$566.00(-1.80%)	\$512.61(8.42%)	7	5	3	%	
SNPS	Technology	10/10	\$453.43	\$272.29(-66.52%)	60.97	\$447.44(1.34%)	\$444.34(2.05%)	\$408.15(11.09%)	1	9	2	%	
TSLA	Consumer Cyclical	10/10	\$251.41	\$303.16(17.07%)	61.66	\$246.41(2.03%)	\$259.00(-2.93%)	\$226.95(10.78%)	4	7	1	%	
CTAS	Industrials	8/10	\$508.60	\$291.50(-74.48%)	68.80	\$498.54(2.02%)	\$485.57(4.74%)	\$466.14(9.11%)	6	7	3	1.09%	
DPZ	Consumer Cyclical	8/10	\$382.28	\$220.30(-73.52%)	65.17	\$391.24(-2.29%)	\$366.17(4.40%)	\$340.45(12.29%)	6	5	4	1.58%	
MA	Financial	8/10	\$404.91	\$293.40(-38.01%)	69.10	\$402.02(0.72%)	\$391.72(3.37%)	\$381.68(6.09%)	1	7	3	0.55%	
MCO	Financial	8/10	\$326.16	\$105.91(-207.96%)	62.11	\$338.22(-3.57%)	\$339.18(-3.84%)	\$320.70(1.70%)	5	7	3	0.93%	
TDG	Industrials	8/10	\$850.95	\$254.88(-233.86%)	51.77	\$878.00(-3.08%)	\$850.88(0.01%)	\$794.60(7.09%)	5	8	3	%	
EQIX	Real Estate	7/10	\$739.44	\$186.57(-296.33%)	53.47	\$771.26(-4.13%)	\$774.26(-4.50%)	\$738.30(0.15%)	1	5	3	1.73%	
IT	Technology	7/10	\$355.86	\$159.67(-122.87%)	58.43	\$344.60(3.27%)	\$346.01(2.85%)	\$331.25(7.43%)	6	7	3	%	
APD	Materials	6/10	\$287.01	\$191.75(-49.68%)	68.65	\$291.78(-1.64%)	\$293.90(-2.35%)	\$288.10(-0.38%)	—	4	3	2.29%	
CMG	Consumer Cyclical	6/10	\$1,886.05	\$985.01(-91.48%)	46.99	\$1,911.27(-1.32%)	\$2,008.84(-6.11%)	\$1,901.51(-0.81%)	1	7	3	%	
ISRG	Healthcare	6/10	\$289.90	\$106.55(-172.08%)	43.93	\$304.00(-4.64%)	\$322.98(-10.24%)	\$310.21(-6.55%)	5	6	4	%	
NVR	Consumer Cyclical	6/10	\$5,968.19	() 48.82	\$6,224.98(-4.13%)	\$6,233.55(-4.26%)	\$5,997.67(-0.49%)		1	7	2	%	
REGN	Healthcare	6/10	\$829.88	() 66.75	\$796.99(4.13%)	\$758.76(9.37%)	\$772.19(7.47%)		4	6	3	%	

Scan Result: 20 Item(s) found													
<div> <div>Tables</div> <div>Overview</div> <div>Technicals</div> <div>Fundamentals</div> <div>Performance</div> <div>Performance Chart</div> </div>													
Symbol ↑↓ ∇	Sector ↑↓	Trend ↑↓	Last ↑↓	FairValue ↑↓	RSI ↑↓	20 SMA ② ↑↓	50 SMA ② ↑↓	100 SMA ② ↑↓	Mohanram ② ↑↓	Piotroski ② ↑↓	SV Rank ② ↑↓	Yield% ↑↓	
ADBE	Technology	10/10	\$516.95	\$476.77(-8.43%)	58.85	\$536.06(-3.57%)	\$511.32(1.10%)	\$444.66(16.26%)	6	7	3	%	
BKNG	Consumer Cyclical	10/10	\$3,088.17	() 63.80	\$3,091.58(-0.11%)	\$2,858.17(8.05%)	\$2,742.78(12.59%)		2	6	3	%	
CHTR	Communication Services	10/10	\$447.88	\$596.52(24.92%)	65.99	\$427.00(4.89%)	\$387.09(15.70%)	\$366.77(22.11%)	3	7	3	%	
INTU	Technology	10/10	\$509.79	\$562.50(9.37%)	71.01	\$512.41(-0.51%)	\$494.69(3.05%)	\$464.89(9.66%)	8	5	2	0.63%	
LLY	Healthcare	10/10	\$553.03	\$162.37(-240.60%)	82.60	\$554.01(-0.18%)	\$497.79(11.10%)	\$462.34(19.62%)	—	5	3	0.84%	
NOW	Technology	10/10	\$555.79	\$474.78(-17.06%)	59.41	\$569.00(-2.32%)	\$566.00(-1.80%)	\$512.61(8.42%)	7	5	3	%	
SNPS	Technology	10/10	\$453.43	\$272.29(-66.52%)	60.97	\$447.44(1.34%)	\$444.34(2.05%)	\$408.15(11.09%)	1	9	2	%	
TSLA	Consumer Cyclical	10/10	\$251.41	\$303.16(17.07%)	61.66	\$246.41(2.03%)	\$259.00(-2.93%)	\$226.95(10.78%)	4	7	1	%	
CTAS	Industrials	8/10	\$508.60	\$291.50(-74.48%)	68.80	\$498.54(2.02%)	\$485.57(4.74%)	\$466.14(9.11%)	6	7	3	1.09%	
DPZ	Consumer Cyclical	8/10	\$382.28	\$220.30(-73.52%)	65.17	\$391.24(-2.29%)	\$366.17(4.40%)	\$340.45(12.29%)	6	5	4	1.58%	

Fundamental & Technical Strength

Scan Result: 15 Item(s) found													
Tables													
OverviewTechnicalsFundamentalsPerformancePerformance Chart													
Symbol	Sector	Trend	Last	FairValue	RSI	20 SMA	50 SMA	100 SMA	Mohanram	Piotroski	SV Rank	Yield%	
↑↓	↑↓	↑↓	↑↓	↑↓	↑↓	↑↓	↑↓	↑↓	↑↓	↑↓	↑↓	↑↓	↑↓
BR	Technology	10/10	\$185.36	\$158.09(-17.25%)	75.10	\$183.03(1.27%)	\$169.25(9.52%)	\$156.89(18.15%)	4	3	3	1.75%	
CEG	Utilities	10/10	\$110.41	()	72.23	\$106.44(3.73%)	\$95.84(15.20%)	\$86.78(27.22%)	—	—	—	1.04%	
CHTR	Communication Services	10/10	\$447.88	\$596.52(24.92%)	65.99	\$427.00(4.89%)	\$387.09(15.70%)	\$366.77(22.11%)	3	7	3	%	
FLT	Technology	10/10	\$270.84	\$281.18(3.68%)	67.07	\$260.13(4.12%)	\$248.59(8.95%)	\$230.08(17.71%)	6	7	3	%	
TJX	Consumer Cyclical	9/10	\$89.65	\$84.42(-6.20%)	69.54	\$89.65(0.00%)	\$85.06(5.40%)	\$81.18(10.43%)	1	7	4	1.55%	
CDW	Technology	8/10	\$206.97	\$214.26(3.40%)	75.70	\$202.71(2.10%)	\$187.10(10.62%)	\$189.38(9.29%)	5	4	2	1.12%	
CTAS	Industrials	8/10	\$508.60	\$291.50(-74.48%)	68.80	\$498.54(2.02%)	\$485.57(4.74%)	\$466.14(9.11%)	6	7	3	1.09%	
EMR	Industrials	8/10	\$97.45	\$65.47(-48.85%)	63.69	\$97.06(0.40%)	\$91.16(6.90%)	\$87.45(11.44%)	—	6	3	2.18%	
TRGP	Energy	8/10	\$84.60	()	61.58	\$83.80(0.95%)	\$76.95(9.94%)	\$75.27(12.40%)	4	7	3	2.34%	
ACN	Technology	7/10	\$317.39	\$284.86(-11.42%)	50.27	\$316.76(0.20%)	\$313.35(1.29%)	\$298.54(6.31%)	6	8	2	1.46%	
ROP	Industrials	7/10	\$498.58	\$173.20(-187.86%)	58.20	\$492.22(1.29%)	\$475.25(4.91%)	\$455.11(9.55%)	—	6	3	0.56%	
AMGN	Healthcare	6/10	\$268.70	\$225.20(-19.32%)	58.28	\$252.85(6.27%)	\$235.67(14.02%)	\$235.98(13.87%)	1	4	3	3.27%	
REGN	Healthcare	6/10	\$829.88	()	66.75	\$796.99(4.13%)	\$758.76(9.37%)	\$772.19(7.47%)	4	6	3	%	
AZO	Consumer Cyclical	4/10	\$2,566.40	\$3,115.28(17.62%)	60.65	\$2,482.04(3.40%)	\$2,469.67(3.92%)	\$2,514.64(2.06%)	5	7	3	%	
EPAM	Technology	4/10	\$261.58	\$300.99(13.09%)	72.37	\$248.00(5.48%)	\$241.05(8.52%)	\$243.62(7.37%)	1	6	3	%	

Scan Result: 15 Item(s) found													
		Tables	Overview Technicals Fundamentals Performance Performance Chart										
Symbol ↑↓	Sector ↑↓	Trend ↑↓	Last ↑↓	FairValue ↑↓	RSI ↑↓	20 SMA ② ↑↓	50 SMA ② ↑↓	100 SMA ② ↑↓	Mohanram ② ↑↓	Plotroski ② ↑↓	SV Rank ② ↑↓	Yield%	
BR	Technology	10/10	\$185.36	\$158.09(-17.25%)	75.10	\$183.03(1.27%)	\$169.25(9.52%)	\$156.89(18.15%)	4	3	3	1.75%	
CEG	Utilities	10/10	\$110.41	()	72.23	\$106.44(3.73%)	\$95.84(15.20%)	\$86.78(27.22%)	—	—	—	1.04%	
CHTR	Communication Services	10/10	\$447.88	\$596.52(24.92%)	65.99	\$427.00(4.89%)	\$387.09(15.70%)	\$366.77(22.11%)	3	7	3	%	
FLT	Technology	10/10	\$270.84	\$281.18(3.68%)	67.07	\$260.13(4.12%)	\$248.59(8.95%)	\$230.08(17.71%)	6	7	3	%	
TJX	Consumer Cyclical	9/10	\$89.65	\$84.42(-6.20%)	69.54	\$89.65(0.00%)	\$85.06(5.40%)	\$81.18(10.43%)	1	7	4	1.55%	
CDW	Technology	8/10	\$206.97	\$214.26(3.40%)	75.70	\$202.71(2.10%)	\$187.10(10.62%)	\$189.38(9.29%)	5	4	2	1.12%	
CTAS	Industrials	8/10	\$508.60	\$291.50(-74.48%)	68.80	\$498.54(2.02%)	\$485.57(4.74%)	\$466.14(9.11%)	6	7	3	1.09%	
EMR	Industrials	8/10	\$97.45	\$65.47(-48.85%)	63.69	\$97.06(0.40%)	\$91.16(6.90%)	\$87.45(11.44%)	—	6	3	2.18%	
TRGP	Energy	8/10	\$84.60	()	61.58	\$83.80(0.95%)	\$76.95(9.94%)	\$75.27(12.40%)	4	7	3	2.34%	
ACN	Technology	7/10	\$317.39	\$284.86(-11.42%)	50.27	\$316.76(0.20%)	\$313.35(1.29%)	\$298.54(6.31%)	6	8	2	1.46%	
ROP	Industrials	7/10	\$498.58	\$173.20(-187.86%)	58.20	\$492.22(1.29%)	\$475.25(4.91%)	\$455.11(9.55%)	—	6	3	0.56%	
AMGN	Healthcare	6/10	\$268.70	\$225.20(-19.32%)	58.28	\$252.85(6.27%)	\$235.67(14.02%)	\$235.98(13.87%)	1	4	3	3.27%	
REGN	Healthcare	6/10	\$829.88	()	66.75	\$796.99(4.13%)	\$758.76(9.37%)	\$772.19(7.47%)	4	6	3	%	
AZO	Consumer Cyclical	4/10	\$2,566.40	\$3,115.28(17.62%)	60.65	\$2,482.04(3.40%)	\$2,469.67(3.92%)	\$2,514.64(2.06%)	5	7	3	%	
EPAM	Technology	4/10	\$261.58	\$300.99(13.09%)	72.37	\$248.00(5.48%)	\$241.05(8.52%)	\$243.62(7.37%)	1	6	3	%	

SimpleVisor Portfolio Changes

We post all of our portfolio changes as they occur at [SimpleVisor](#):

September 18th

?As we have discussed over the last several weeks, we continue using this corrective period in the market to rebalance portfolios for a potentially stronger year-end run. (See today's blog, [October Weakness Before The Year-End Run?](#) for reasons why we think this may be the case.)

With that premise in place, we continue consolidating our holdings and moving our weightings more in line with the benchmark index.

We are exiting LEN and ITB. Homebuilder sentiment is turning over, and the trade is not working out as we expected. This also reduces our small and mid-cap holdings, which are lagging in performance.

Energy prices are very extended, as is the energy sector. We are rebalancing XOM and XLE back to model weights. This entails selling about 0.25% of each position for most accounts.

CMCSA has been consolidating for a while and sitting on a strong support uptrend. Further, the technical backdrop is getting ready to turn upward as well. We have been chomping at the bit to buy more and are taking advantage of the situation today.?

Equity Model

- *Sell 100% of Lennar Homebuilders (LEN)*
- *Reduce Exxon Mobil (XOM) to a target portfolio weight of 2%.*
- *Add 1% of the portfolio to Comcast Communication (CMCSA) to increase its weighting to 2.5%.*

ETF Model

- *Sell 100% of the Homebuilder ETF (ITB)*
- *Reduce the iShares Energy Sector ETF (XLE) down to a target portfolio weight of 2%*
- *Add 1% of the portfolio to the iShares Communication Sector ETF (XLC), increasing weight to 7.5%*

September 21st

?We previously owned Albemarle (ALB) due to its leading position in lithium production. We had bought and sold it numerous times previously for a good gain. We re-entered the position with a very small sizing (1% of the portfolio) as a starter position for a new holding. However, the materials sector remains under pressure, and the technical setup for ALB is failing. We are stopped out of the position today.

Small and mid-capitalization stocks continue to underperform so we are stopping out of the Russell 2000 Index ETF (IWM) in the ETF Model.?

Equity Model

- *Sell 100% of Albemarle (ALB)*

ETF Model

- *Sell 100% of the Russell 2000 Index ETF (IWM)*
-



Looking for the 401k Plan Manager?

Find it in the Retirement section
of our website.

[> Learn more](#)



Looking for the 401k Plan Manager?

Find it in the Retirement section
of our website.

[> Learn more](#)

Lance Roberts, C.I.O.

Have a great week!