


THIS WEEK'S TOP 10 BUYS AND TOP 10 SELLS

Monday, March 21, 2022 (Mar 21, 2022, 8:30:50 AM)

	<p>These are high conviction stocks that TPA has recommended recently. They are technically positive for Buys or negative for Sells and trading at or near their investment action levels.</p>
---	--

March 21, 2022

THIS WEEK'S TOP 10 BUYS AND TOP 10 SELLS

BUYS

	Ticker	Name	Last Price	Action Price	Distance to Action
1	CTSH	Cognizant Technology Solutions	91.72	85.00	-7.33%
2	AMD	Advanced Micro Devices Inc	113.46	105.00	-7.46%
3	QQQ	Invesco QQQ Trust	351.49	325.00	-7.54%
4	CRM	Salesforce.com Inc	218.80	195.00	-10.88%
5	NET	CloudFlare Inc	109.84	95.00	-13.51%
6	NVDA	Nvidia Corp	264.53	225.00	-14.94%
7	AXP	American Express Co.	190.72	162.00	-15.06%
8	U	Unity Software Inc	97.15	80.00	-17.65%
9	CRWD	CrowdStrike Holdings Inc	208.06	170.00	-18.29%
10	SQ	Block Inc - Ordinary Shares	140.64	110.00	-21.79%

SELLS

	Ticker	Name	Last Price	Action Price	Distance to Action
1	TXT	Textron Inc.	75.15	75.25	0.13%
2	ADP	Automatic Data Processing Inc	214.69	215.00	0.14%
3	BLD	TopBuild Corp	231.65	232.00	0.15%
4	CDW	CDW Corp	179.39	180.00	0.34%
5	MANH	Manhattan Associates Inc.	140.51	141.00	0.35%
6	MSI	Motorola Solutions Inc	233.09	235.00	0.82%
7	VMC	Vulcan Materials Co	183.47	185.00	0.83%
8	ETN	Eaton Corporation PLC	155.58	157.00	0.91%
9	TYL	Tyler Technologies Inc.	435.99	440.00	0.92%
10	ACN	Accenture plc	323.95	340.00	4.95%

CHARTS

BUYS

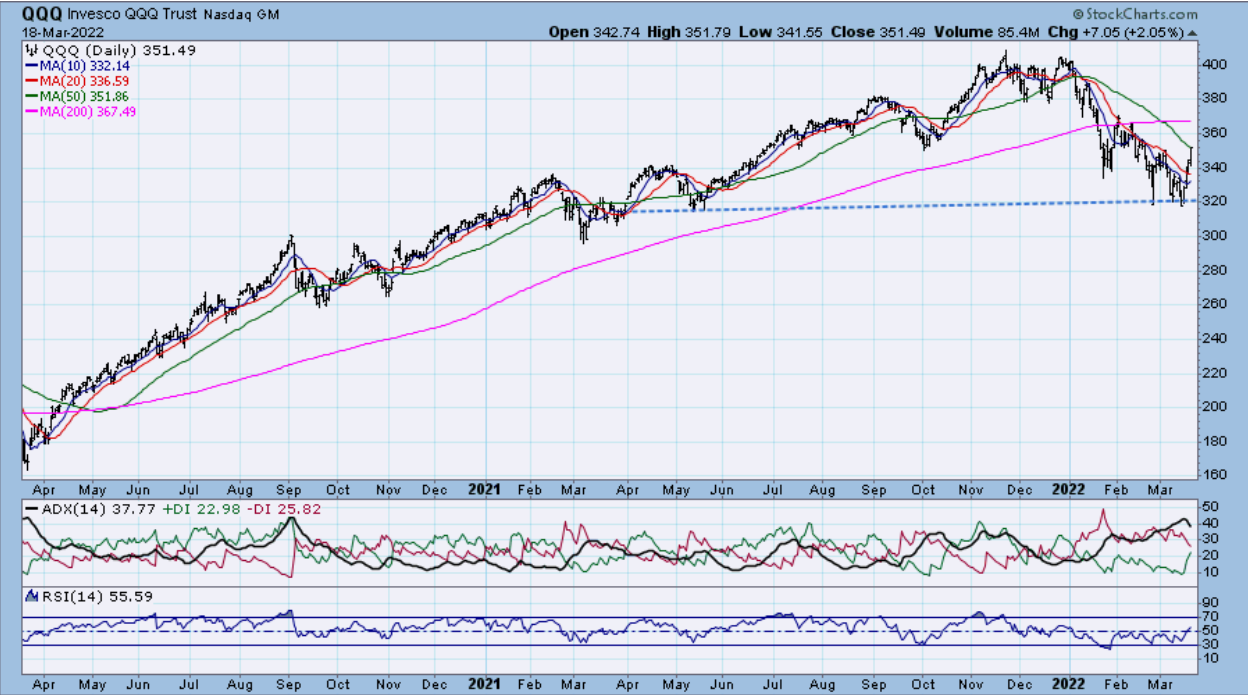
AXP



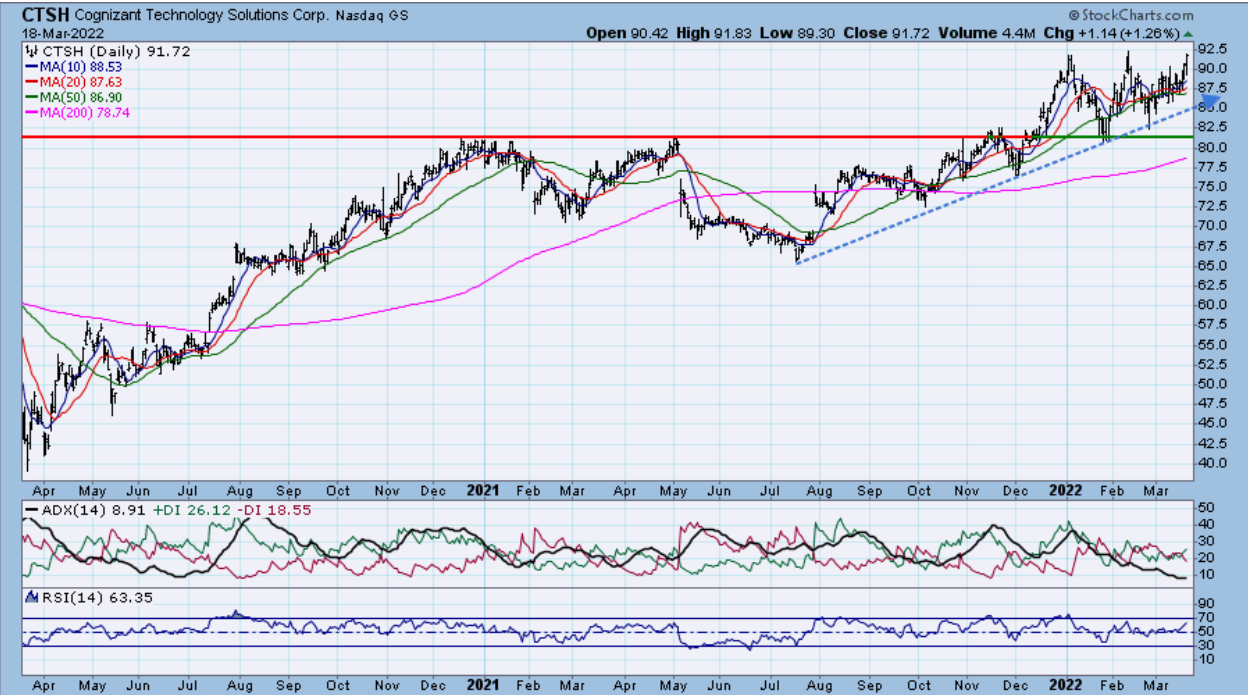
SQ



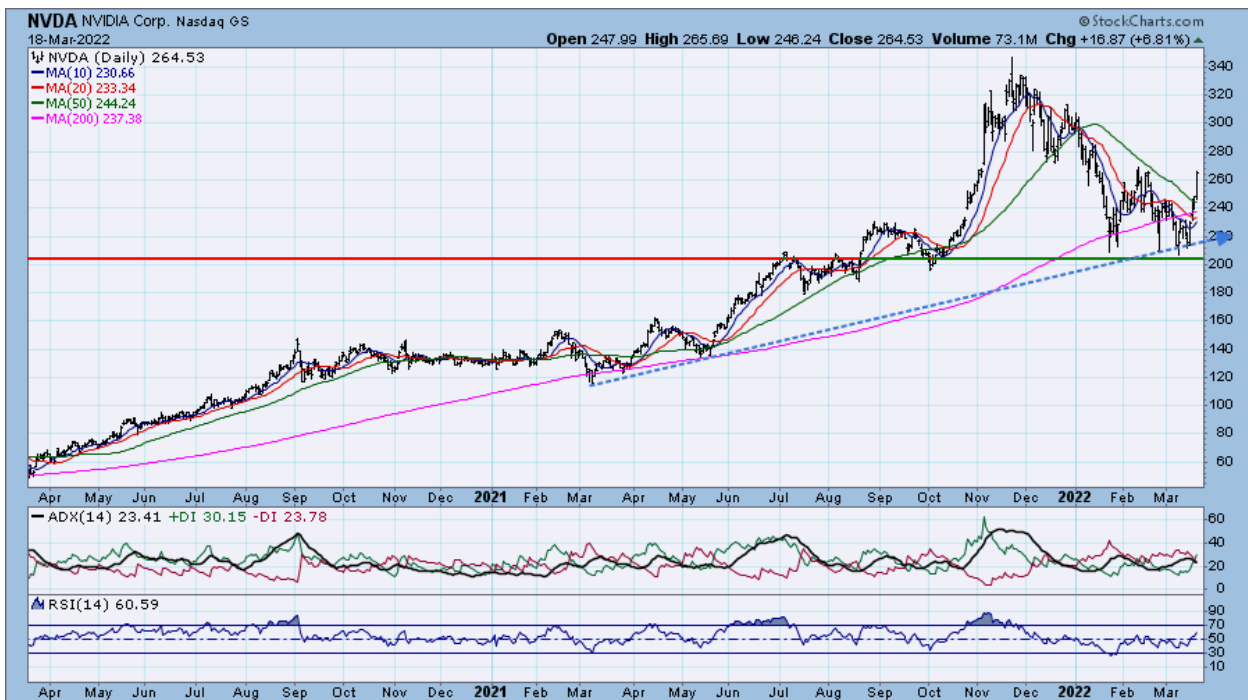
QQQ



CTSH



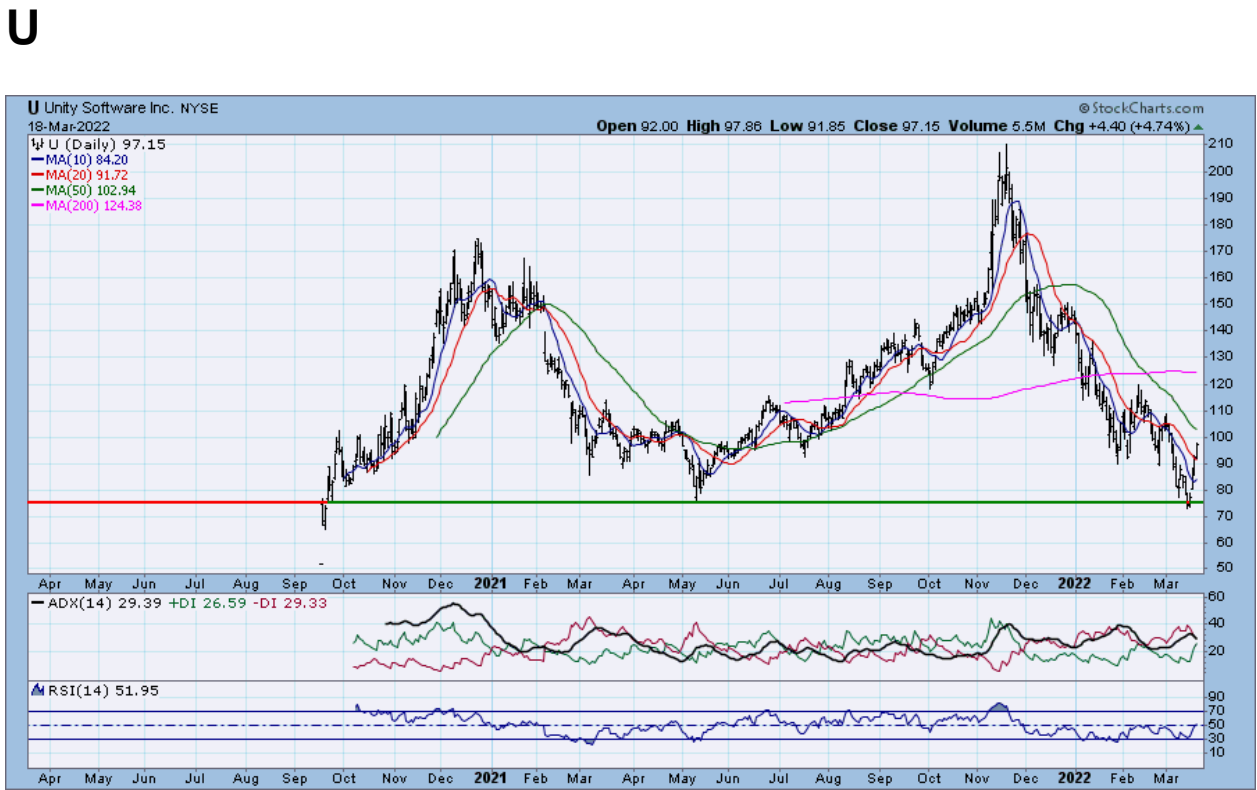
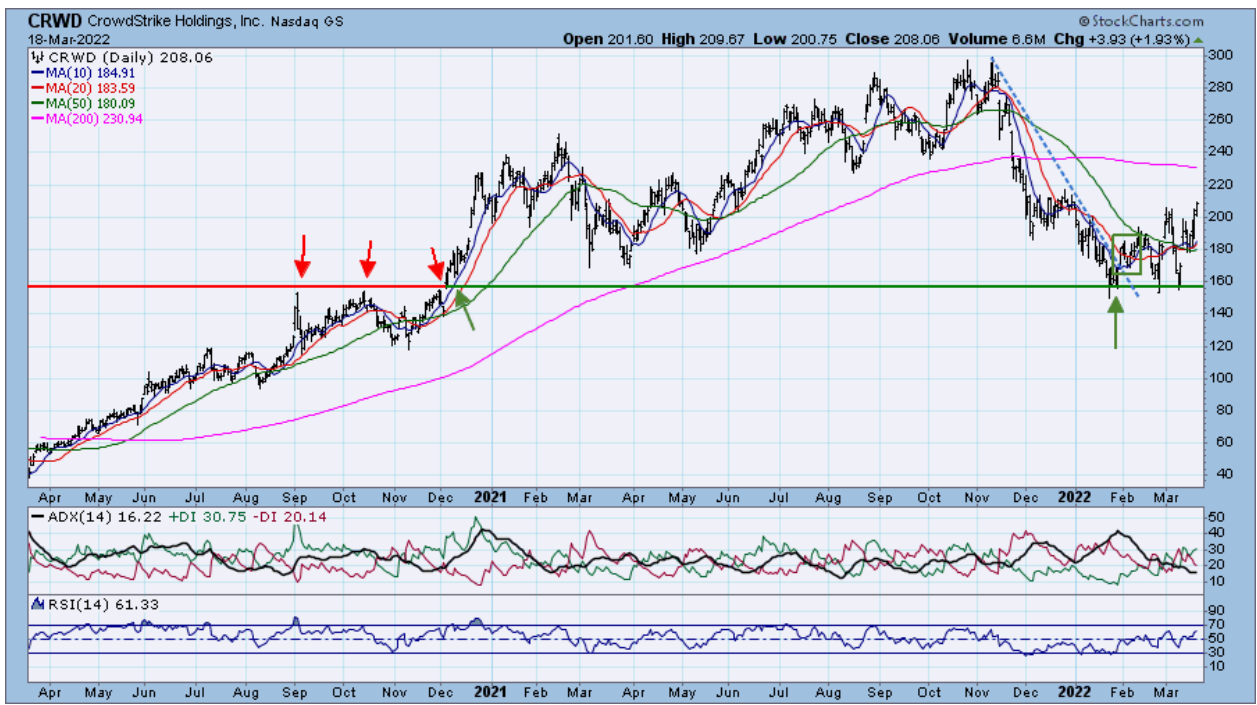
NVDA



CRM



CRWD



NET

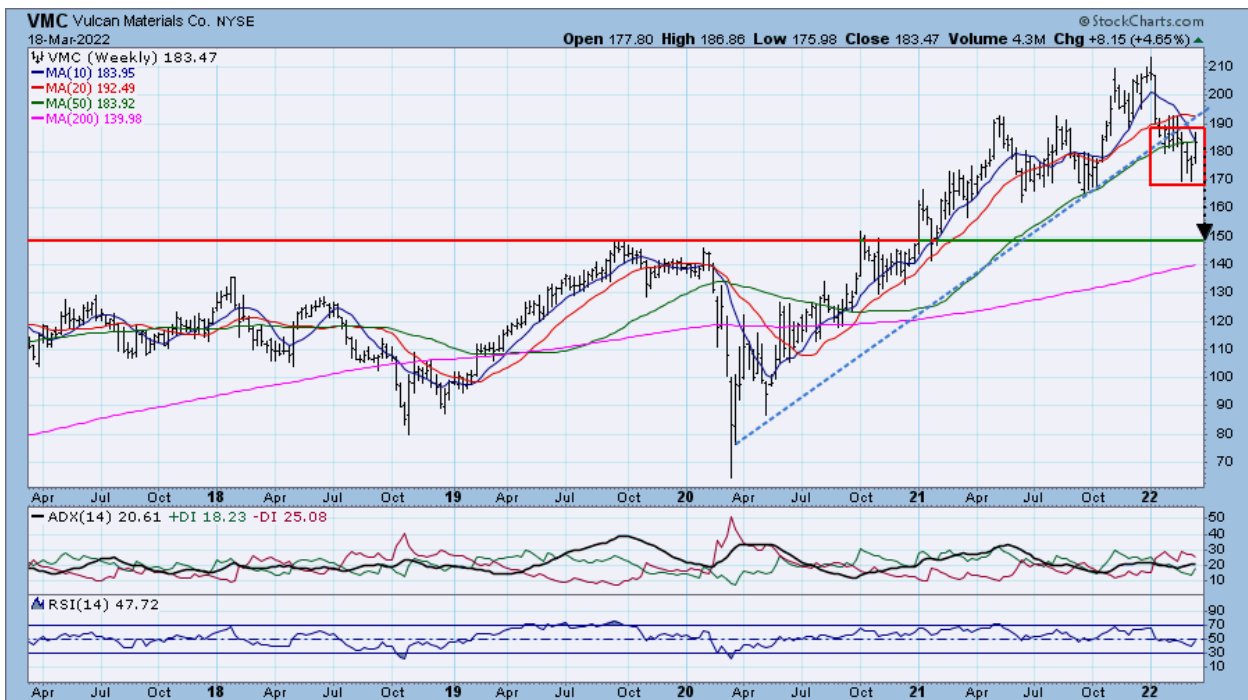


AMD



SELLS

VMC



MSI



ETN



BLD



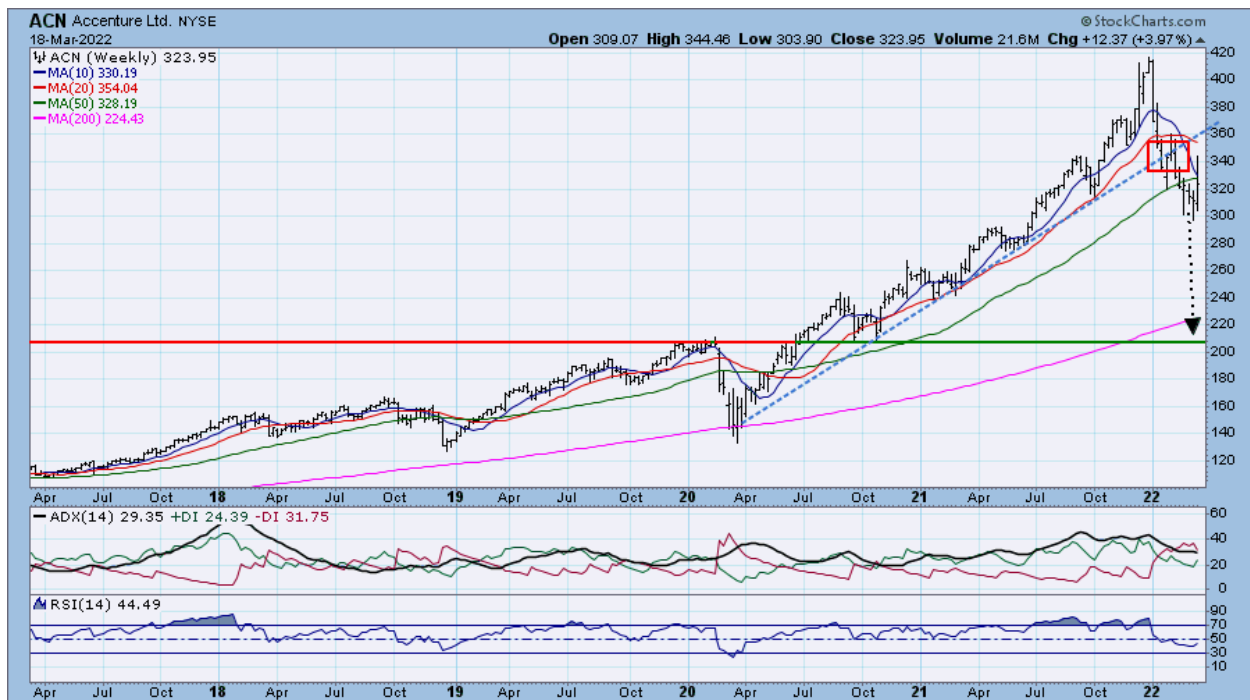
TYL



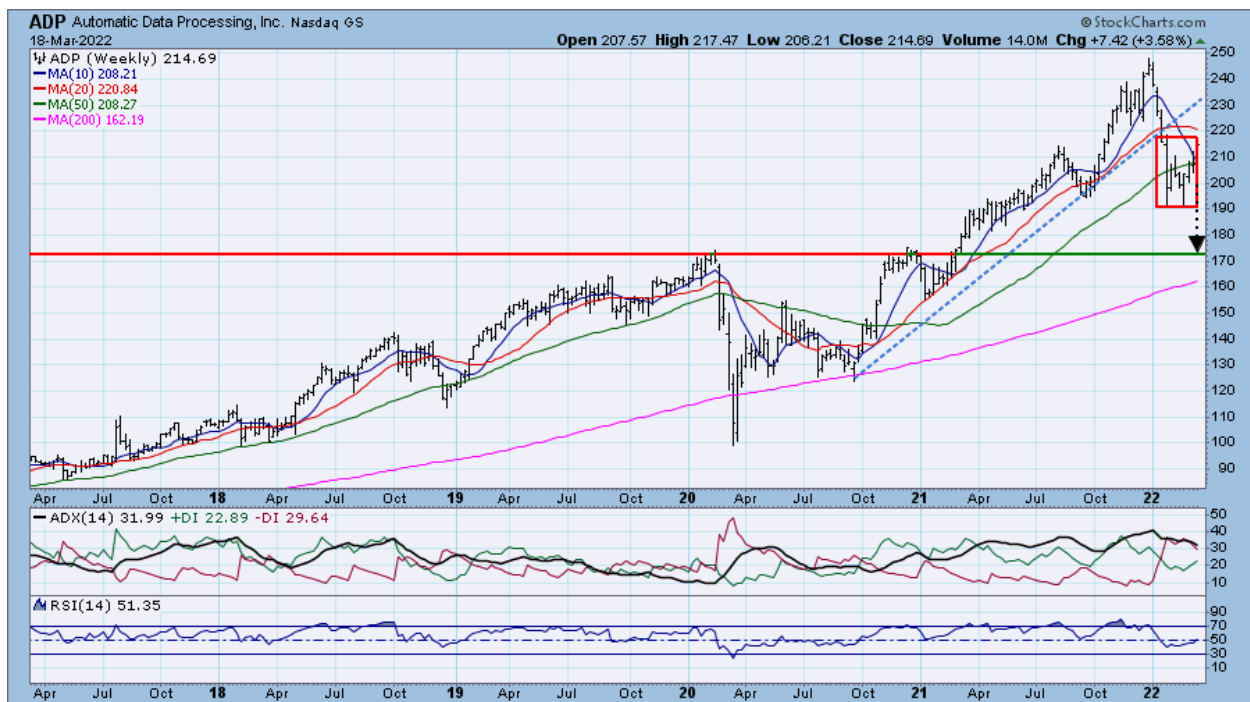
CDW



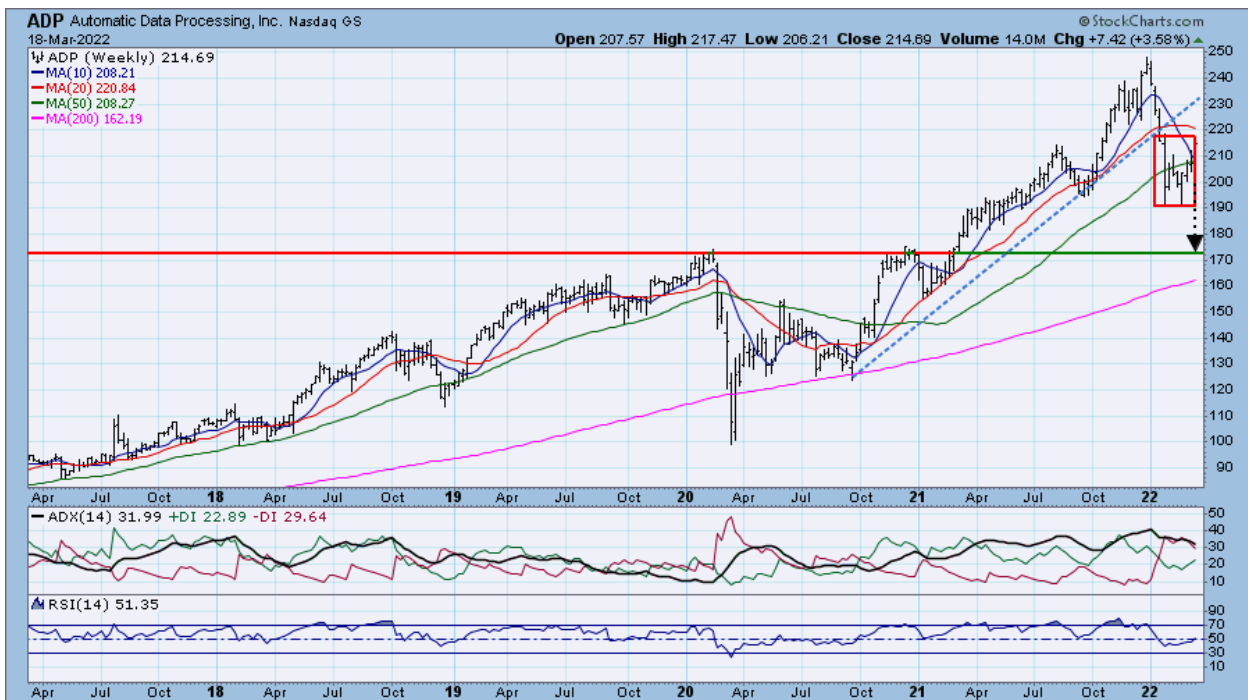
ACN



ADP



MANH

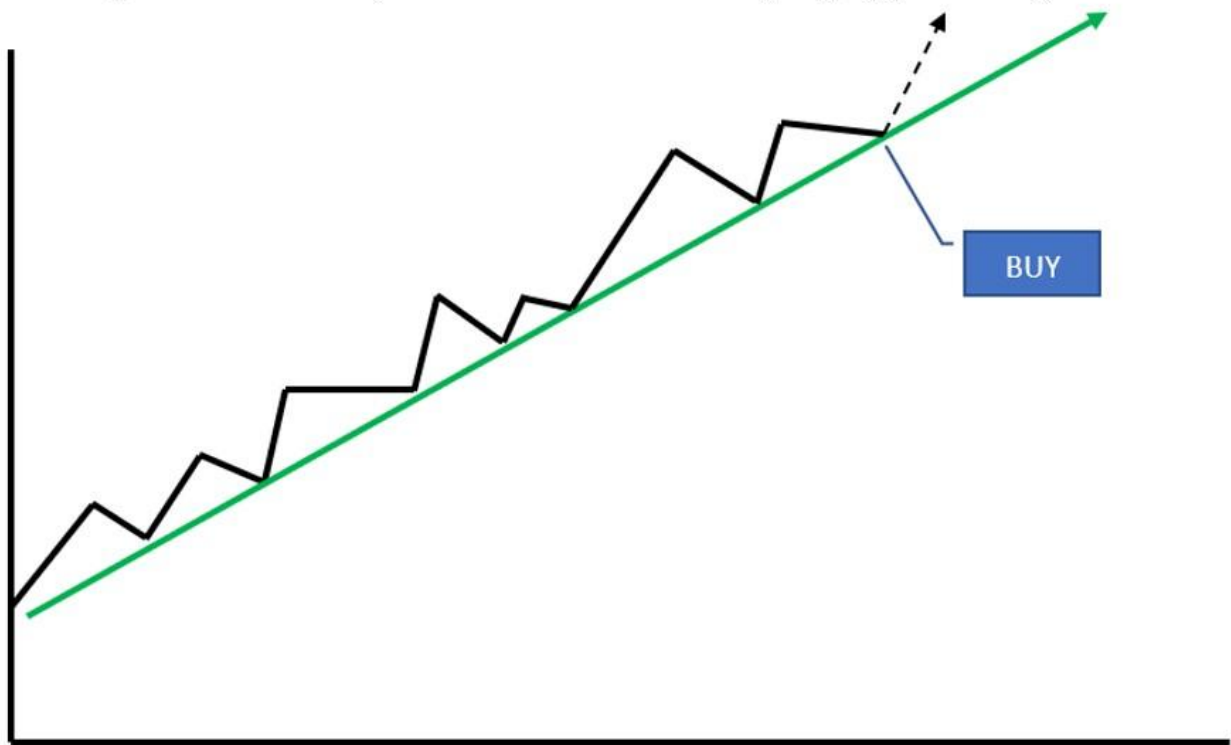


TXT

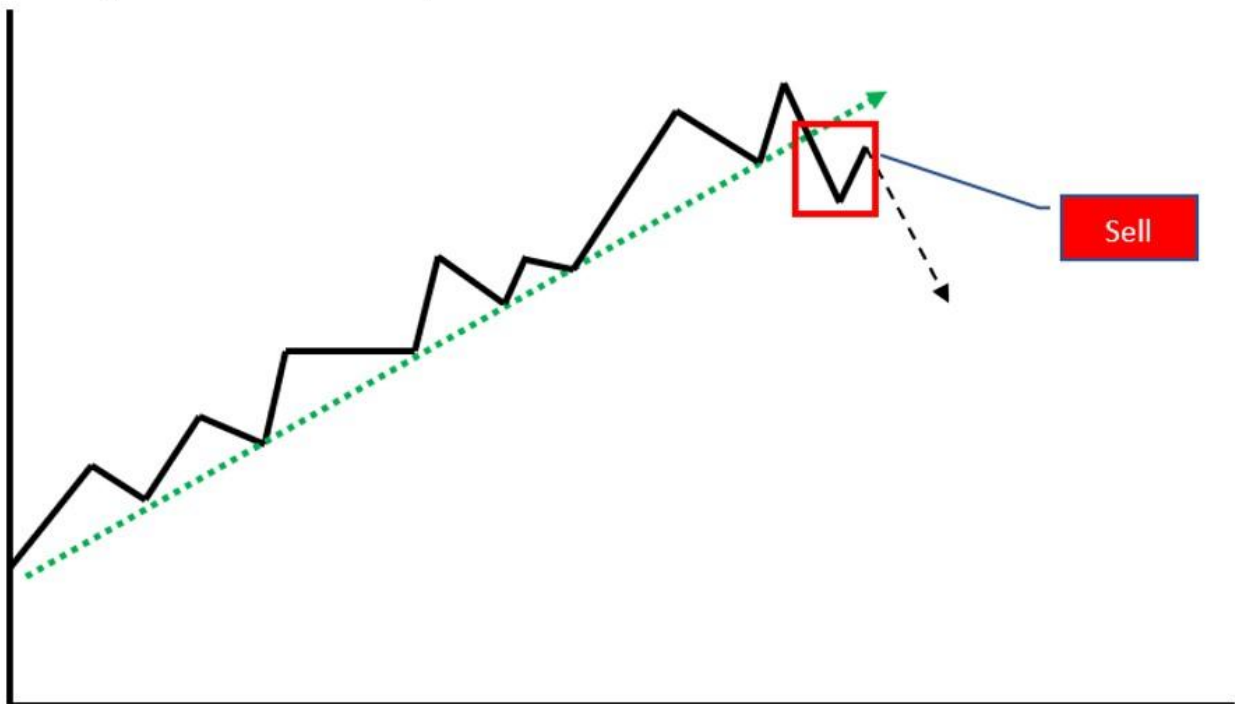


Actionable stocks usually fit one of the 6 TPA charts below.

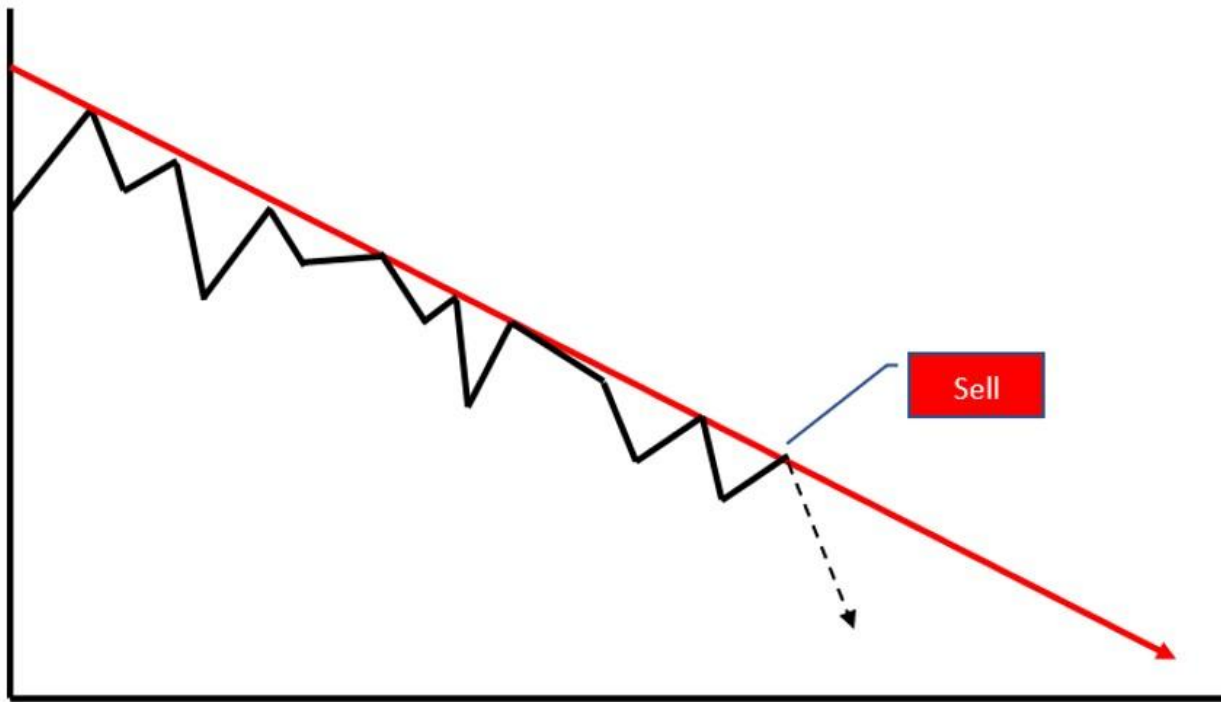
1. **Uptrend intact**, recent decline is a buying opportunity



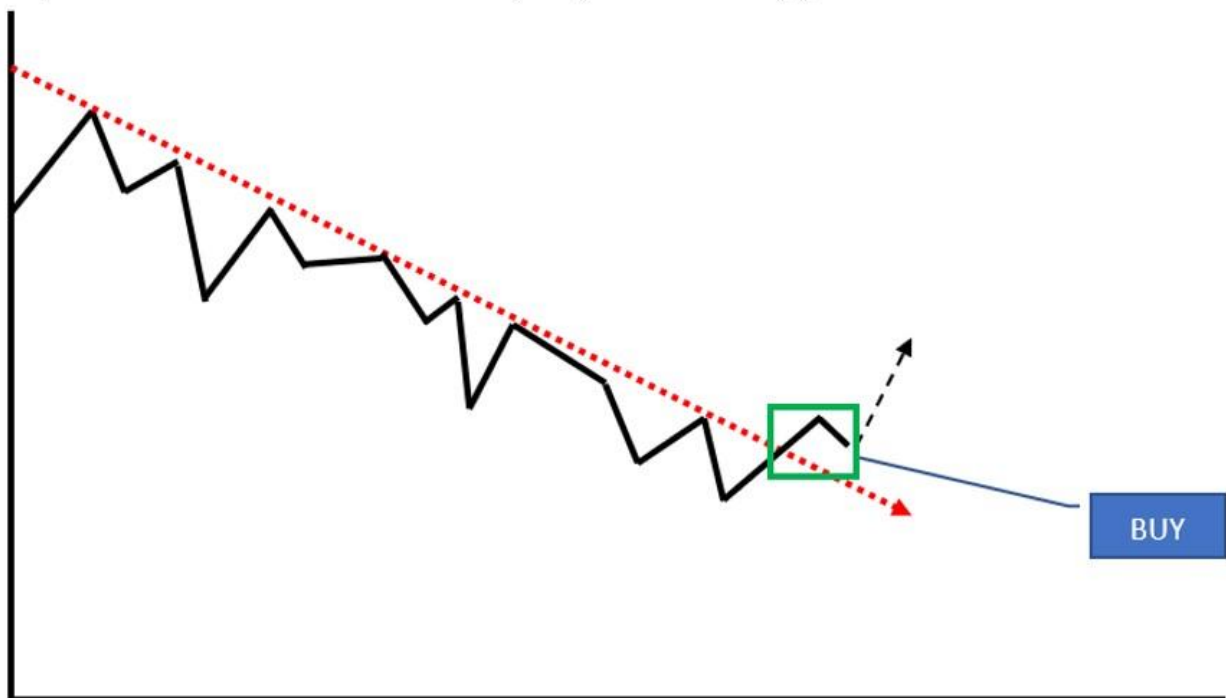
2. **Uptrend violation**, sell at new resistance



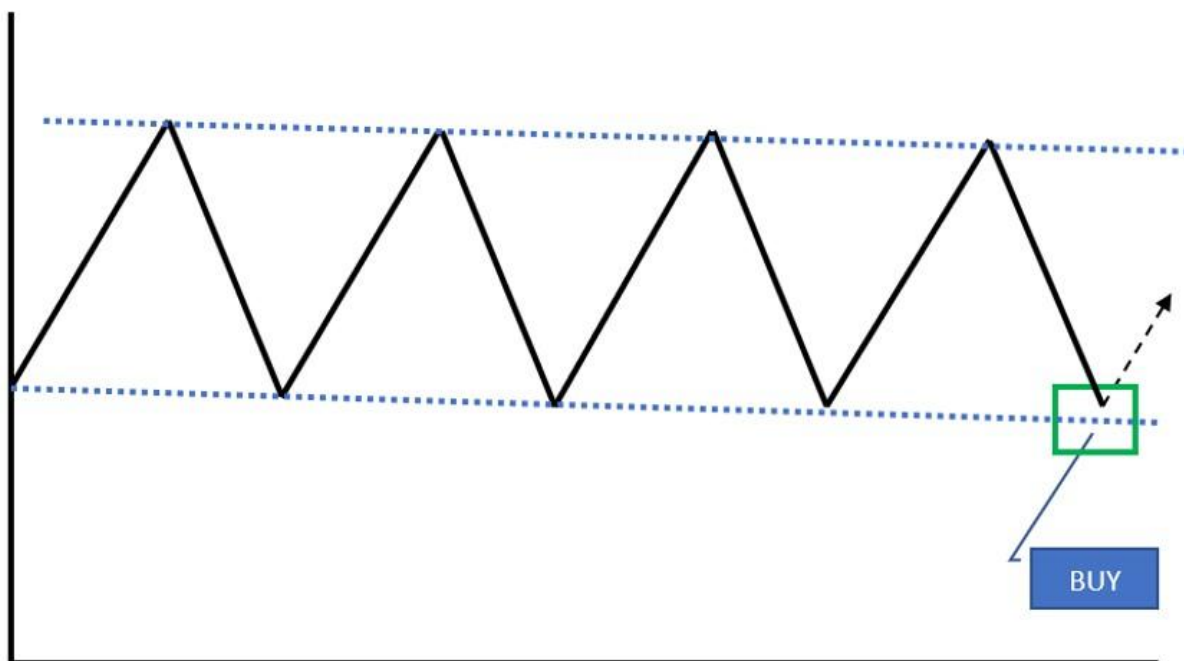
3. **Downtrend intact**, recent rally is a selling opportunity



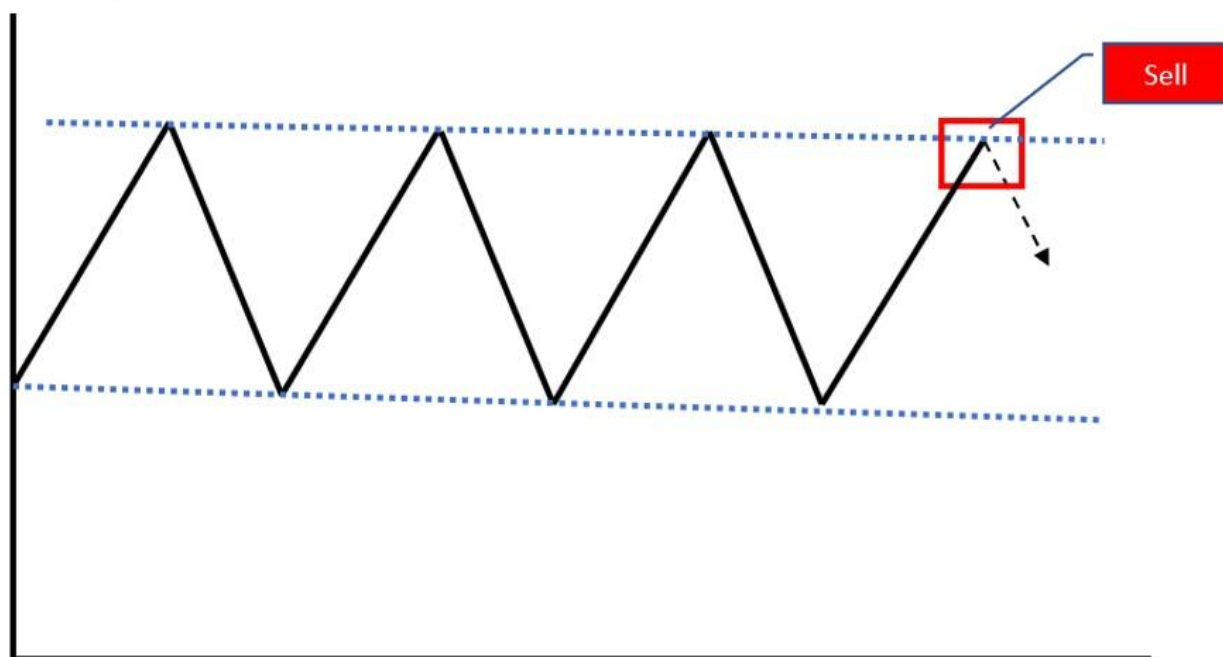
4. **Downtrend violation**, buy at new support



5. Bottom of range, buy at established support



6. Top of range, sell at established resistance



CLICK ON LINKS BELOW FOR TECHNICAL INDICATOR EXPLANATIONS:

[ASCENDING - DESCENDING TRIANGLE](#)

[BASING-TOPPING-CONSOLIDATION](#)

BREAKOUT (Breakdown)

CHANNEL & RANGE

DIRECTIONAL MOVEMENT INDEX (DMI)

DOUBLE BOTTOM or DOUBLE TOP

MACD-MOVING AVERAGE CONVERGENCE-DIVERGENCE

MOVING AVERAGES

RELATIVE STRENGTH & PEER STOCK PERFORMANCE

REPEATING PATTERNS

RSI-RELATIVE STRENGTH

SUPPORT, RESISTANCE, BREAKOUT, BREAKDOWN

TREND

Visit TPA at <http://www.turningpointanalyticsllc.com/>

ALWAYS REMEMBER: No strategy exists in a vacuum always evaluate the relevant sector & market.

Over 80% of portfolio performance is determined by sector and market forces (Ibbotson & Kaplan study January/February 2000)

Turning Point Analytics Disclaimer

Turning Point Analytics (TPA) is only one of many tools that an investor should use to make a final investment decision. TPA is an overlay on top of a client's good fundamental or macro analysis. TPA does not create or provide fundamental analysis. The information in this communication may include technical analysis. Technical analysis is a discipline that studies the past trading history of a security while trying to forecast future price action. Technical analysis does not consider the underlying fundamentals of the security in question and it does not provide information reasonably sufficient upon which to base an investment decision. Investors should not rely on technical analysis alone while making an investment decision. Before making an investment decision, investors should consider reviewing all publicly available information regarding the security in question, including, but not limited to, the underlying fundamentals of the security and other information which is available in filings with the Securities and Exchange Commission. The information and analysis contained in reports provided by TPA are copyrighted and may not be duplicated or redistributed for any reason without the express written consent of TPA. The information in this communication is for institutional or sophisticated investors only. By accepting this communication, the recipient agrees not to forward, and/or copy the information to any other person, except as permitted, or required by law. TPA does not guarantee accuracy or completeness. TPA is a publisher of technical research and has no investment banking or advisory relationship with any company mentioned in any report. Reports are neither a solicitation to buy nor an offer to sell securities. Past performance is in no way indicative of future results. Opinions expressed are subject to change without notice. TPA will provide, upon request, the details of any past recommendations. TPAs analysis and recommendations should not be used as the sole reason to buy or sell any security. TPA may compensate brokers and intermediaries for sales and marketing services. You understand and acknowledge that there is a very high degree of risk involved in trading securities and/or currencies. The Company, the authors, the publisher, and all affiliates of Company assume no responsibility or liability for your trading and investment results. It

should not be assumed that the methods, techniques, or indicators presented will be profitable or that they will not result in losses. Statements, data, and analysis made by TPA or in its publications, are made as of the date stated and are subject to change without notice. TPA and/or its officers and employees may, from time to time acquire, hold, or sell a position in the securities mentioned herein. Upon request, TPA will furnish specific information in this regard. TPA will not be held liable for losses caused by conditions and/or events that are beyond TPAs control including, but not limited to war, strikes, natural disasters, new government restrictions, market fluctuations, and communications disruptions.