



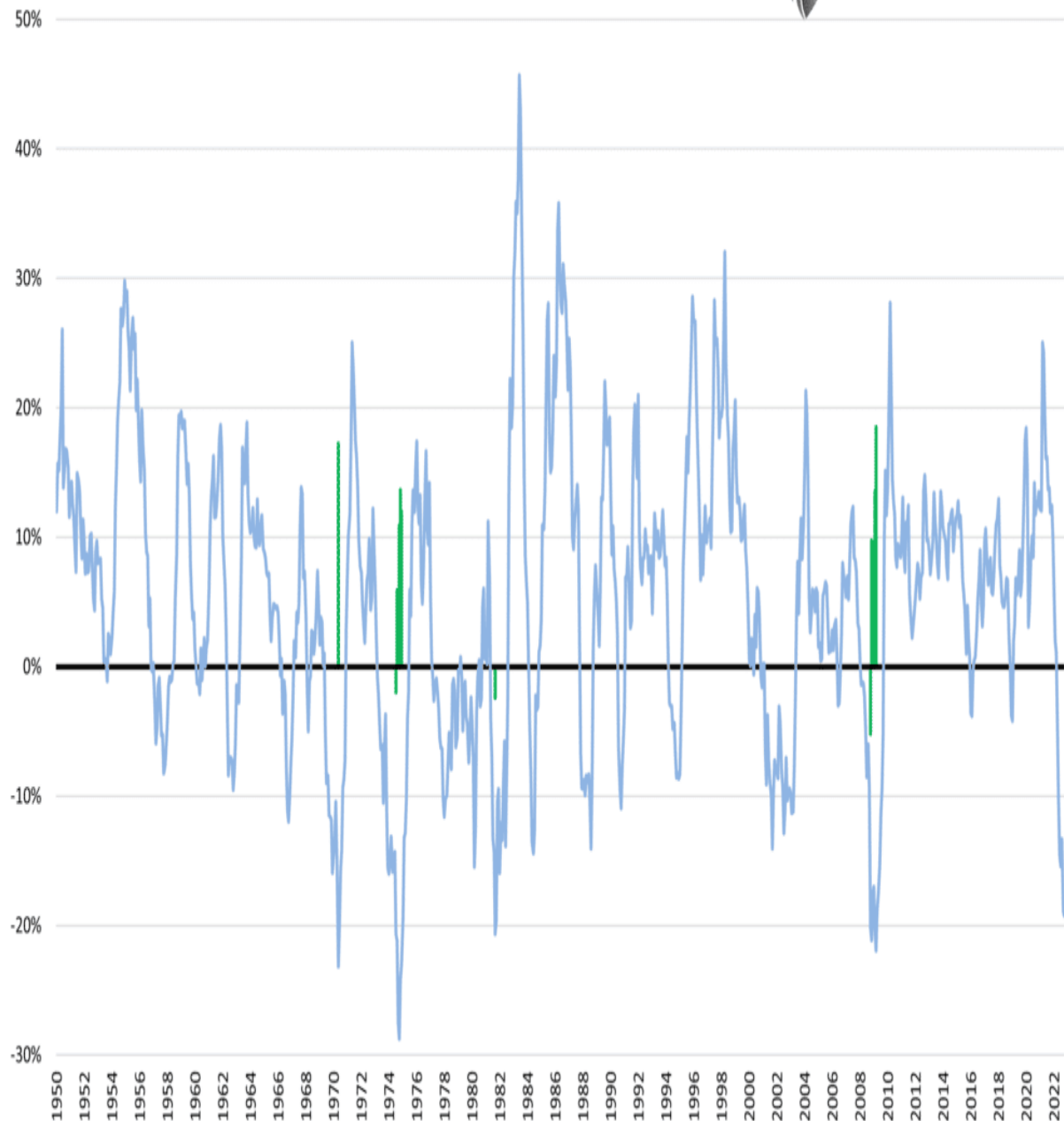
A Balanced Portfolio Promises a Better 2023

Since 1950 there have only been four other instances in which a balanced 60/40 stock/bond portfolio did as poorly as this year. Over the last 70 years, balanced portfolios averaged a 5.4% return, with over 70% of the monthly readings positive. The recent poor performance of balanced portfolios leads us to question what next year's returns might be. The graph below shows annual returns by month for a balanced portfolio. In green, we show the subsequent 12-month returns for each instance where the balanced portfolio was down by 20% or more. Of the thirteen monthly times with greater than 20% declines, ten of the thirteen were followed by positive results. On average, a balanced portfolio was up nearly 8% in the following twelve months. Expanding the time horizon to two years, we find that returns for a balanced portfolio averaged 11%, and in all cases, they were positive.

60/40 Returns and Subsequent Returns when < -20%



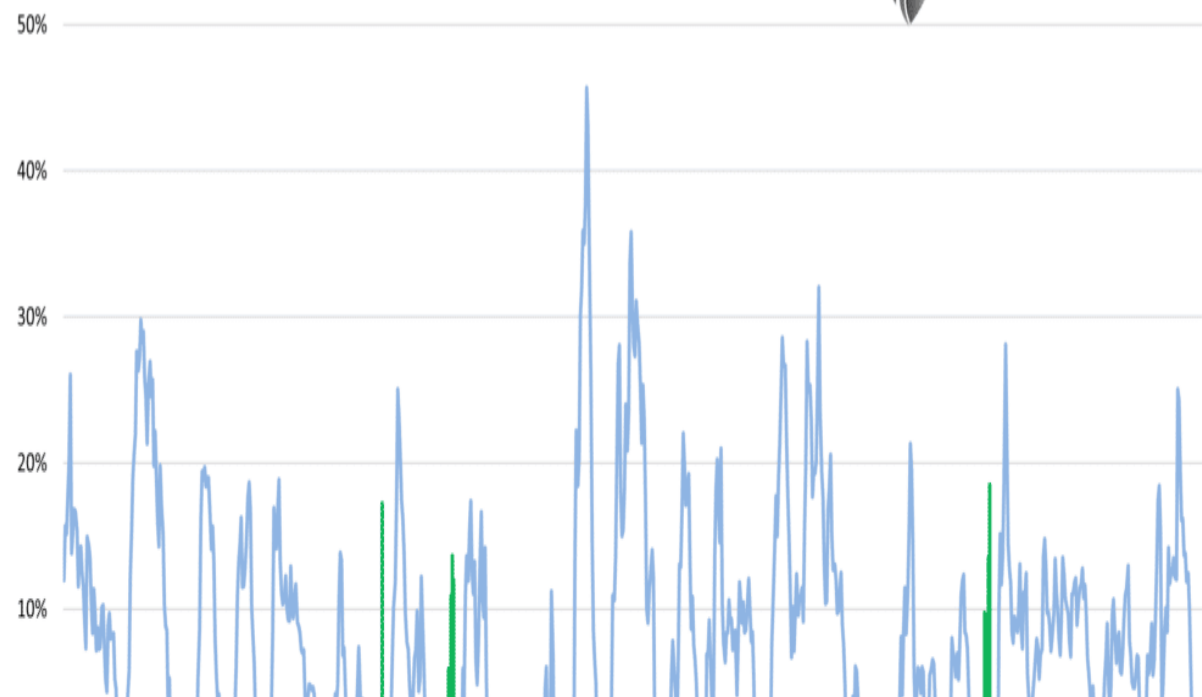
Real Investment Advice



60/40 Returns and Subsequent Returns when < -20%



Real Investment Advice






What To Watch Today

Economy

- 8:30 a.m. ET: **GDP Annualized**, quarter-over-quarter, 3Q A (2.4% expected, -0.6% prior)
- 8:30 a.m. ET: **Durable goods orders**, September Preliminary (0.6% expected, -0.2% prior)
- 8:30 a.m. ET: **Personal Consumption**, quarter-over-quarter, 3Q A (1% expected, 2.0% prior)
- 8:30 a.m. ET: **Durables excluding transportation**, September Preliminary (0.2% expected, 0.3% prior)
- 8:30 a.m. ET: **GDP Price Index**, quarter-over-quarter, 3Q A (5.3% expected, 9.0% prior)
- 8:30 a.m. ET: **Non-defense capital goods orders excluding aircraft**, September Preliminary (0.2% expected, 0.3% prior)
- 8:30 a.m. ET: **Core PCE**, quarter-over-quarter, 3Q A (4.6% expected, 4.7% prior)
- 8:30 a.m. ET: **Initial Jobless Claims**, week ended Oct. 22 (225,000 expected, 214,000 prior)
- 8:30 a.m. ET: **Continuing Claims**, week ended Oct. 15 (1.385 million prior)
- 11:00 a.m. ET: **Kansas City Manufacturing Index**, October (-2 expected, 1 prior)

Earnings

Company		Time	Estimate		 Growth <small>Show only confirmed?</small>	Surprise		
✓ AMZN	Amazon.com, Inc.	4:00 PM ET	\$0.22	\$126.42 B	14.1%	+	=	-
✓ AAPL	Apple, Inc.	4:30 PM ET	\$1.26	\$90.00 B	8.0%	+	=	-
TTE	TOTALENERGIES	6:25 AM ET	\$3.91	\$66.99 B	22.4%	+	=	-
✓ CMCSA	Comcast Corp.	7:00 AM ET	\$0.89	\$30.07 B	-0.8%	+	=	-
✓ TMUS	T-Mobile US Inc.	4:00 PM ET	\$0.54	\$20.08 B	2.4%	+	=	-
✓ INTC	Intel Corp.	4:00 PM ET	\$0.34	\$18.62 B	-3.0%	+	=	-
PCRFY	Panasonic Corporation	BMO	\$0.15	\$58.33 B	268.8%	+	=	-
REPY	REPSOL SA-ADR	BMO	\$1.05	\$73.52 B	367.7%	+	=	-
✓ BUD	Anheuser-Busch InBev	5:00 AM ET	\$0.78	\$15.12 B	5.9%	+	=	-
✓ MRK	Merck & Co., Inc.	6:30 AM ET	\$1.67	\$14.28 B	8.6%	+	=	-
VALE	Vale S.A.	AMC	\$0.60	\$10.99 B	-13.3%	+	=	-
EADSY	European Aeronautic	DMH	\$0.17	\$12.52 B	1.0%	+	=	-
✓ CAT	Caterpillar, Inc.	6:30 AM ET	\$3.19	\$14.19 B	14.5%	+	=	-
MIELF	MITSUBISHI ELECT ...	BMO	\$0.20	\$9.48 B	-2.6%	+	=	-
✓ NOC	Northrop Grumman C...	6:40 AM ET	\$6.09	\$9.21 B	5.6%	+	=	-
✓ HON	Honeywell Internation...	6:30 AM ET	\$2.16	\$9.04 B	6.7%	+	=	-
✓ INT	World Fuel Services ...	4:20 PM ET	\$0.64	\$12.12 B	45.1%	+	=	-
✓ COF	Capital One Financial...	4:05 PM ET	\$5.03	\$8.54 B	4.0%	+	=	-
TAK	Takeda Pharmaceutic...	BMO	-	\$30.13 B	292.6%	+	=	-
✓ LIN	Linde plc	6:15 AM ET	\$2.94	\$7.92 B	3.3%	+	=	-
✓ GILD	Gilead Sciences, Inc.	4:00 PM ET	\$1.44	\$6.12 B	-17.5%	+	=	-
✓ PBF	PBF Energy Inc.	6:05 AM ET	\$6.03	\$10.29 B	43.2%	+	=	-
✓ CS	Credit Suisse Group	BMO	(\$0.13)	\$3.80 B	-45.5%	+	=	-
✓ CBRE	CBRE Group, Inc.	6:55 AM ET	\$1.24	\$7.90 B	16.2%	+	=	-
✓ MO	Altria Group Inc	7:00 AM ET	\$1.31	\$5.57 B	-17.9%	+	=	-
✓ AN	AutoNation Inc.	7:00 AM ET	\$6.32	\$6.94 B	8.8%	+	=	-
✓ SO	Southern Company	6:30 AM ET	\$1.33	\$6.61 B	6.0%	+	=	-
✓ MCD	McDonalds Corp.	7:00 AM ET	\$2.57	\$5.74 B	-7.4%	+	=	-
KMTUY	Komatsu Ltd Ord	BMO	\$0.49	\$5.95 B	1.8%	+	=	-
LYG	Lloyds TSB Group plc	BMO	\$0.08	\$4.97 B	-13.9%	+	=	-
✓ IP	International Paper Co.	7:00 AM ET	\$1.22	\$5.41 B	-5.3%	+	=	-
✓ X	United States Steel C...	4:15 PM ET	\$1.92	\$5.21 B	-8.5%	+	=	-
✓ HIG	Hartford Financial Se...	4:15 PM ET	\$1.29	\$5.63 B	-1.0%	+	=	-
✓ PCG	PG&E Corp.	8:00 AM ET	\$0.24	\$6.13 B	12.2%	+	=	-
ASX	ASE Technology Hold...	BMO	-	\$5.95 B	10.0%	+	=	-
✓ CARR	Carrier Global Corpor...	6:30 AM ET	\$0.65	\$5.13 B	-4.0%	+	=	-
✓ WDC	Western Digital Corp.	8:00 AM ET	\$0.44	\$3.63 B	-28.1%	+	=	-
✓ MA	Mastercard Inc	8:00 AM ET	\$2.57	\$5.70 B	14.3%	+	=	-
✓ LUV	Southwest Airlines Co.	6:45 AM ET	\$0.41	\$6.51 B	39.1%	+	=	-
✓ AEP	American Electric Po...	6:55 AM ET	\$1.57	\$4.66 B	1.3%	+	=	-
✓ PXD	Pioneer Natural Reso...	4:20 PM ET	\$7.43	\$6.90 B	54.6%	+	=	-
✓ SWK	Stanley Black & Decker	6:00 AM ET	\$0.73	\$4.72 B	10.7%	+	=	-
✓ LHX	L3Harris Technologies	4:00 PM ET	\$3.44	\$4.43 B	4.8%	+	=	-
✓ FISV	Fiserv, Inc.	7:00 AM ET	\$1.70	\$4.27 B	2.6%	+	=	-
✓ LH	Laboratory Corp. of A...	7:00 AM ET	\$4.71	\$3.80 B	-6.5%	+	=	-
✓ RS	Reliance Steel & Alu...	6:50 AM ET	\$6.20	\$4.07 B	5.8%	+	=	-
✓ CX	Cemex S.A.B. de C.V.	BMO	-	\$15.76 B	318.2%	+	=	-
✓ DTE	DTE Energy Co.	7:00 AM ET	\$1.58	\$3.86 B	3.9%	+	=	-
ABEV	Ambev S.A.	BMO	\$0.03	\$4.00 B	13.0%	+	=	-
✓ XEL	XCEL Energy, Inc.	6:00 AM ET	\$1.20	\$3.55 B	2.4%	+	=	-
✓ PFG	Principal Financial Gr...	4:15 PM ET	\$1.45	\$3.06 B	-10.6%	+	=	-
✓ BWA	BorgWarner Inc.	6:30 AM ET	\$1.02	\$4.02 B	17.7%	+	=	-
✓ LKQ	LKQ Corp.	6:00 AM ET	\$0.95	\$3.33 B	1.0%	+	=	-
✓ KDP	Keurig Dr Pepper	6:30 AM ET	\$0.46	\$3.58 B	10.2%	+	=	-
✓ BAX	Baxter International, I...	7:15 AM ET	\$0.82	\$3.86 B	19.7%	+	=	-
✓ STM	STMicroelectronics N.V.	BMO	\$1.04	\$3.97 B	24.2%	+	=	-
✓ TECK	Teck Resources Limited	BMO	\$1.31	\$3.68 B	16.7%	+	=	-

Company		Time	Estimate		 Growth <small>Show only confirmed?</small>	Surprise		
✓ AMZN	Amazon.com, Inc.	4:00 PM ET	\$0.22	\$126.42 B	14.1%	+	=	-

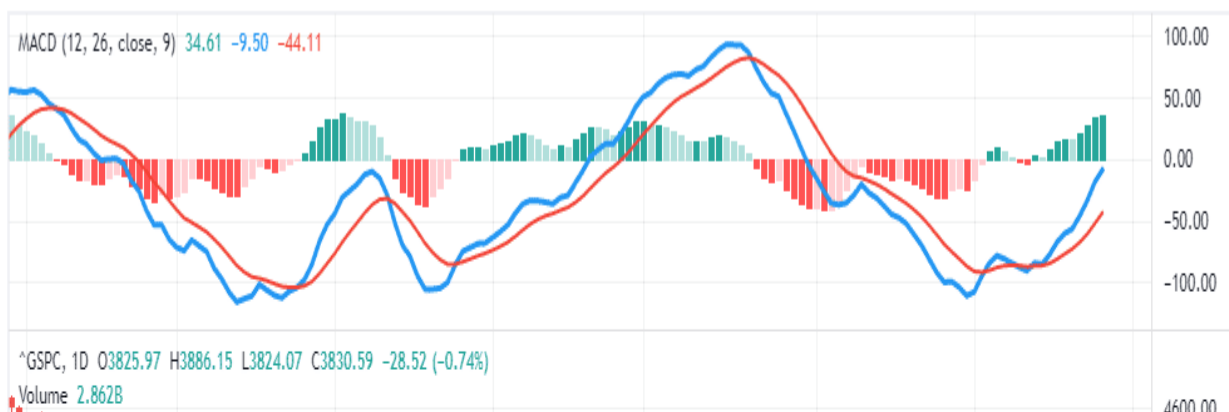
Market Trading Update

If it hadn't been for the Megacap Technology names yesterday, the markets would have likely turned in a positive performance. However, such was not the case. The good news is that the rest of the market traded positively, and the S&P 500 did not violate the 3800 support level from Tuesday. However, while Facebook's (META) earnings were disappointing, which was not surprising following Google's report, we still have Apple (AAPL) and Amazon (AMZN) tomorrow. Those reports could weigh on technology shares further if the disappointment continues to run through these names. However, once the newsflow is complete, if the market can hold the 3800 support, a further rally is possible, particularly if the Fed shows some signs of reducing its aggressiveness next week.

Nonetheless, we still advise caution as this market is still tenuous at best, with many trapped longs looking for an exit. Trade carefully.



TradingView



Big Stocks Getting Punished ? Are We Close To The End

At the start of the year, we discussed how the Mega cap stocks were keeping the market afloat as the rest of the index was being pummeled by heavy selling. With many of those stocks exceptionally wrung out, the sellers have come for the *generals*.? As Yahoo Finance noted this morning:

?Eight of the top 20 companies in the S&P 500 have lost more than \$100 billion in market cap as of Wednesday ? with Microsoft down \$780 billion, Alphabet \$650 billion, and Meta Platforms \$555 billion. Nvidia, Apple, and Amazon have each lost more than \$400 billion since the start of 2022.?

BIG STOCKS GETTING PUNISHED

Top 20 S&P 500 Components by Market Cap

CIRCLE SIZE = CURRENT MARKET CAP

SECTOR ● TECH ● COMMUNICATION SERVICES ● CONSUMER DISCRETIONARY ● FINANCIALS ● HEALTH CARE ● ENERGY ● CONSUMER STAPLES



SOURCE: YAHOO FINANCE

yahoo!
finance

BIG STOCKS GETTING PUNISHED

Top 20 S&P 500 Components by Market Cap

CIRCLE SIZE = CURRENT MARKET CAP

SECTOR ● TECH ● COMMUNICATION SERVICES ● CONSUMER DISCRETIONARY ● FINANCIALS ● HEALTH CARE ● ENERGY ● CONSUMER STAPLES



SOURCE: YAHOO FINANCE

yahoo!
finance

The good news is this also suggests we may be closer to the end of the bear market than not.

So Far, The Greatest October Ever for the Dow

It's hard to believe, but if the Dow Jones Index finishes at current levels, it will be the best October in its history. The following commentary is courtesy of Ryan Detrick from the Carson Group.

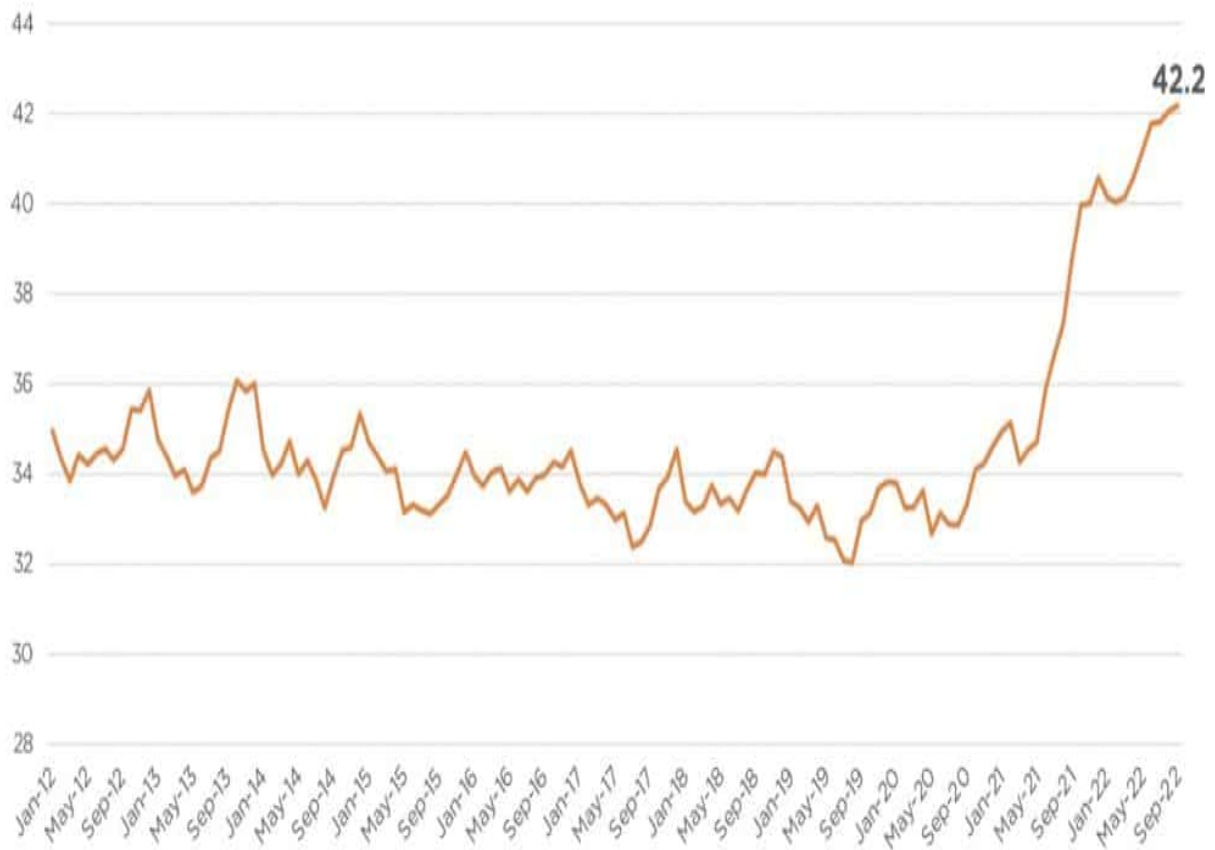
The Dow is up 10.8% for the month, which would be the best October since Charlie Dow created the Dow in 1896. The other Octobers to gain 10%? 1982 and 2002. Both ended bear markets, and stocks had huge multi-year gains next.

Car Prices are Unsustainable

We have shared a few charts over the last year showing how home prices as a percentage of income have risen well above historical norms. Not surprisingly, home prices are starting to drop rapidly. As we share below, auto prices are also well above traditional valuations. The first graph shows it now takes, on average, 42 weeks of income to purchase a vehicle. That is about 2.5 months more than it had been for the last ten years. The reason for that divergence is the sharp increase in used and new car prices with relatively smaller income increases.

The second graph shows that used car prices are declining but still well above pre-pandemic norms. The third graph from Kelly Blue Book highlights that new car prices are about 15% to 20% above trend and have yet to fall. Given the dearth of new car supply over the last two years, it may take longer for new car prices to normalize. Assuming used car prices keep falling, cheaper used car alternatives should weigh on new car prices and sales.

Weeks of Income Needed to Purchase a New Light Vehicle



Weeks of Income Needed to Purchase a New Light Vehicle



MANHEIM USED VEHICLE VALUE INDEX

Mid-October 2022



Cox
AUTOMOTIVE™



Manheim

MANHEIM USED VEHICLE VALUE INDEX

Mid-October 2022

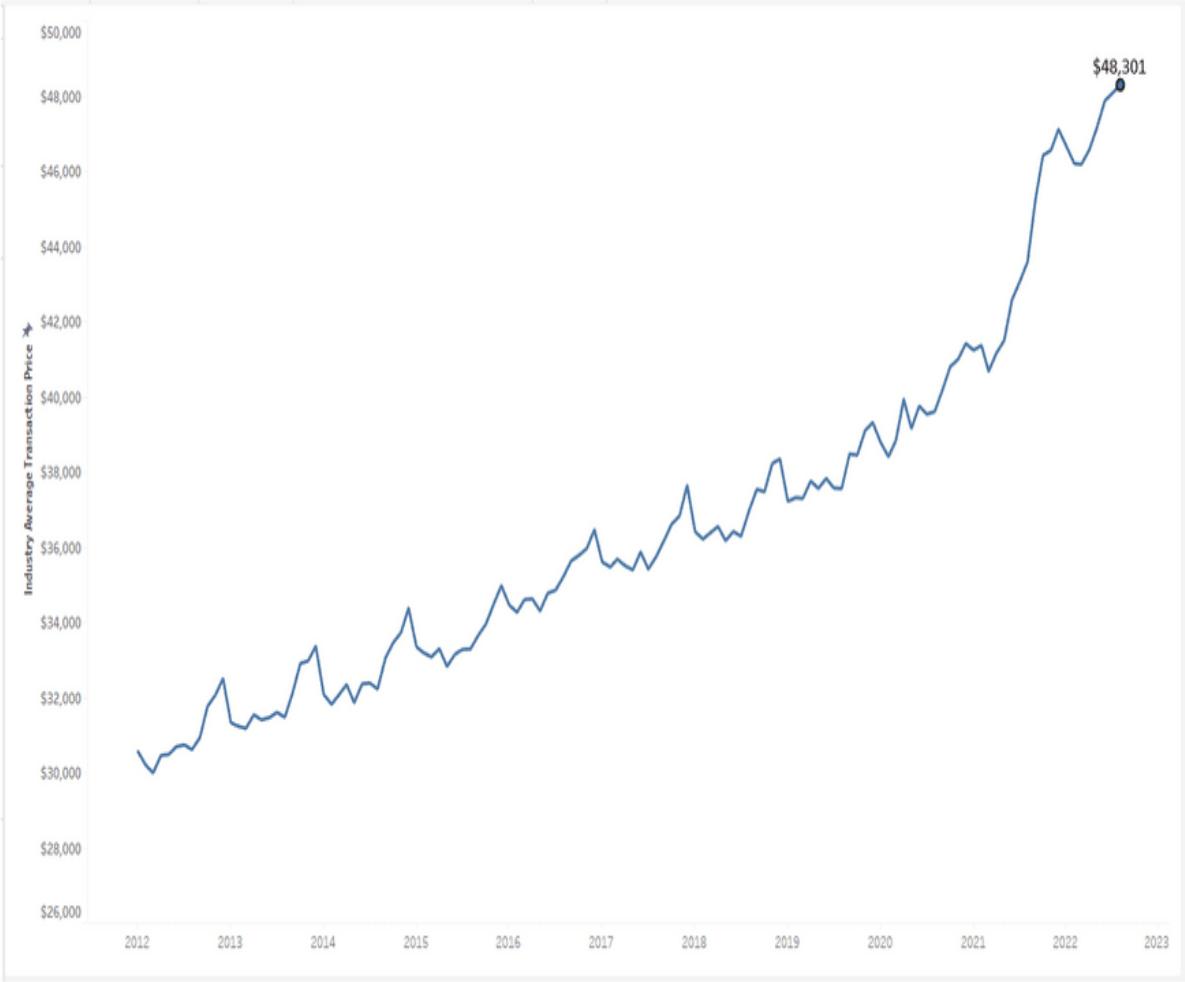


Cox

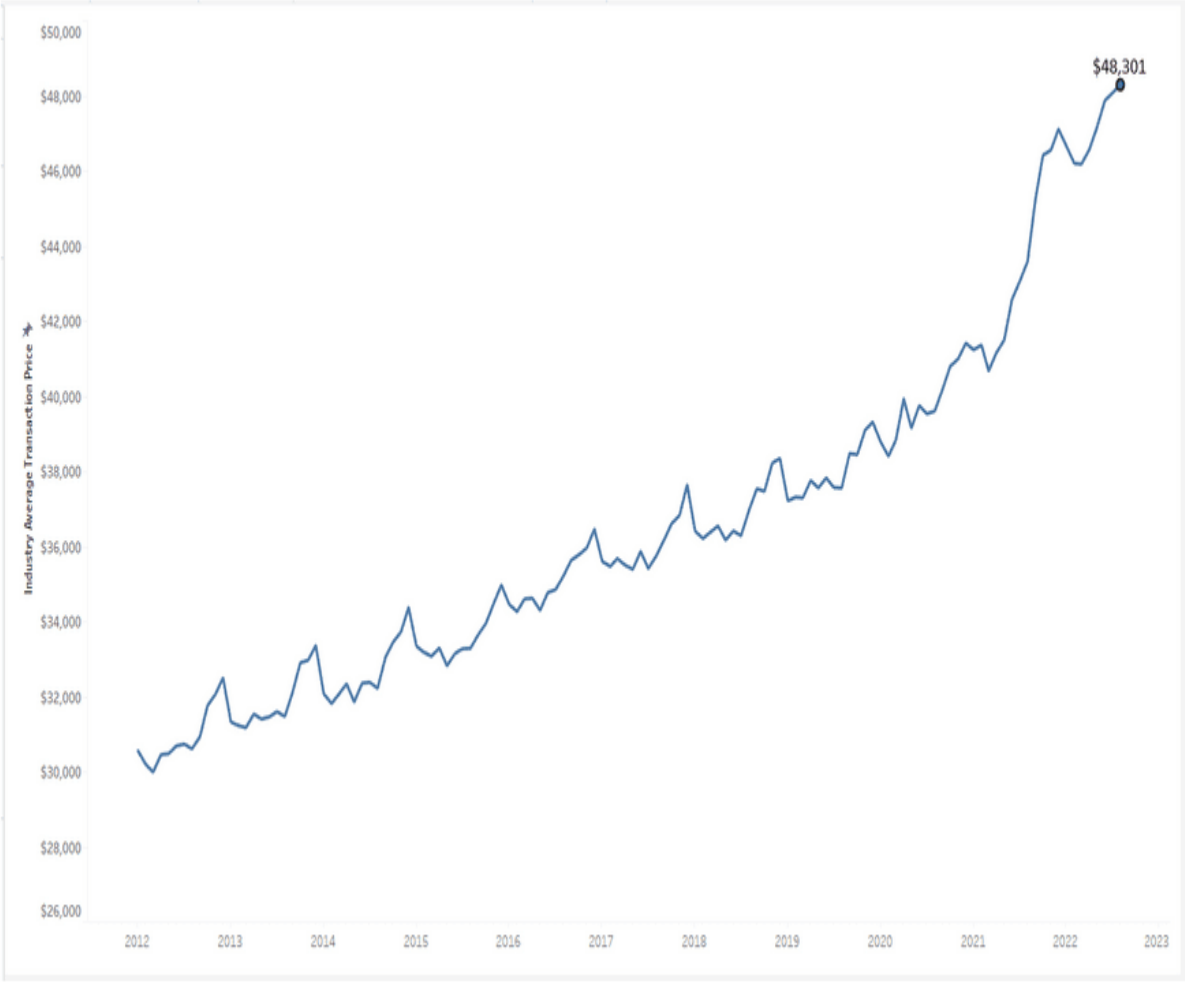


Manheim

NEW-VEHICLE AVERAGE TRANSACTION PRICE

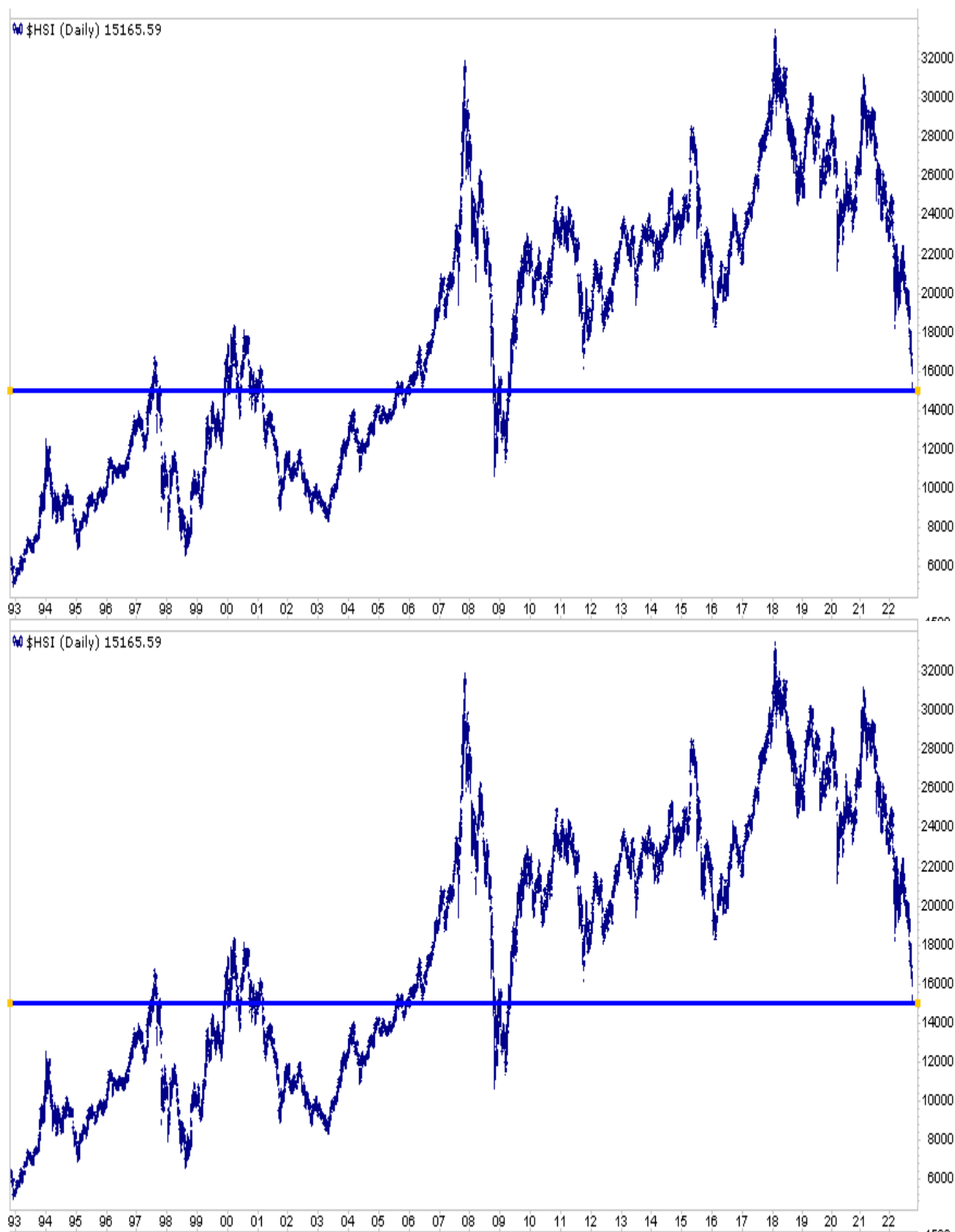


NEW-VEHICLE AVERAGE TRANSACTION PRICE



Value In China

If you are willing to overlook geopolitical risks, Hong Kong's Hang Seng Index offers a lot of value. As the graph below shows, the index is now at the same level it was in the late 90s and early 2000s. In 1997, its P/E was at 20, Price to Sales at 10, and price to tangible book value at 3. Today its P/E is 6, and the price to sales and the price to book value are around 1.



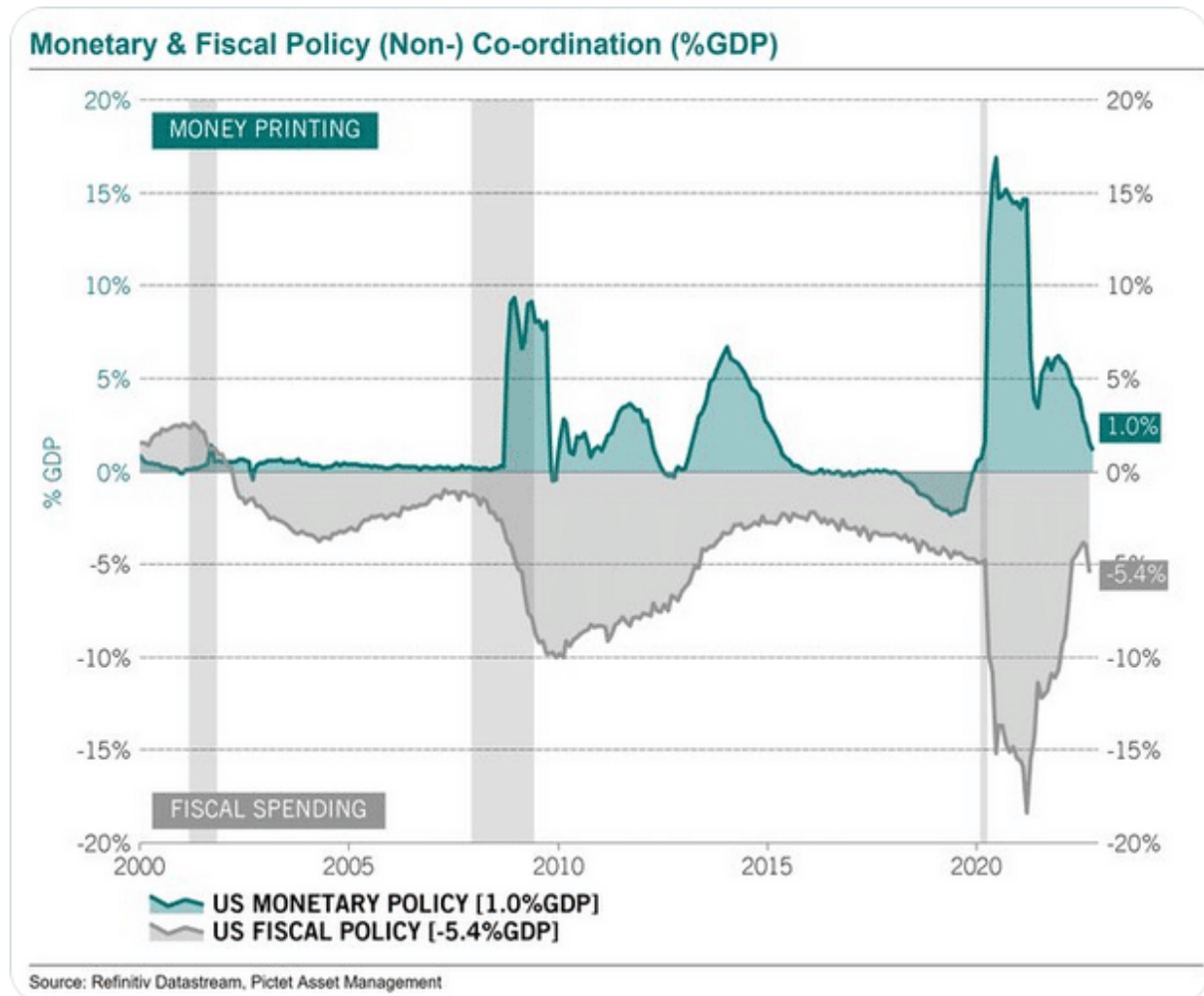
Tweet of the Day



Steve Donzé
@steve_donze

...

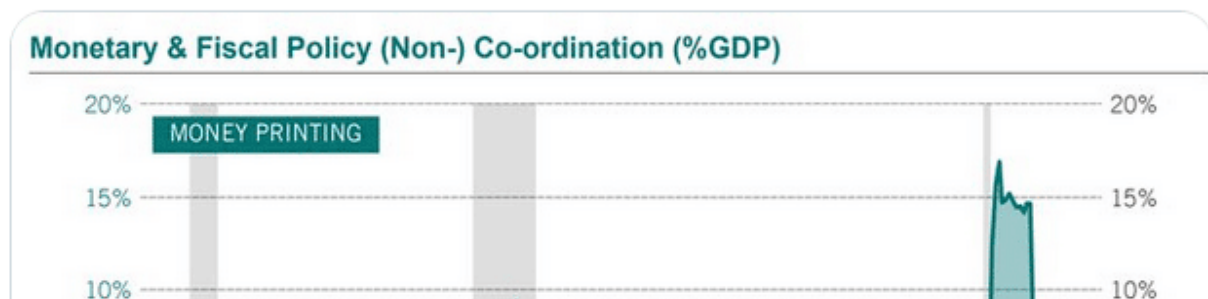
Buyers' strike 101. US money printing - fiscal spending gap is widening fast, from -4% of GDP now (on a 12-month trailing basis) to -9% soon, as Fed QT reaches -4% of GDP cruising speed.



Steve Donzé
@steve_donze

...

Buyers' strike 101. US money printing - fiscal spending gap is widening fast, from -4% of GDP now (on a 12-month trailing basis) to -9% soon, as Fed QT reaches -4% of GDP cruising speed.



Please [subscribe to the daily commentary](#) to receive these updates every morning before the opening bell.

If you found this blog useful, please send it to someone else, share it on social media, or contact us to set up a meeting.